

Single Door Intrepid II

Special Supplement to the Intrepid II Owner's Guide

The Owners' Guide for the original Intrepid II also serves as the primary reference for the new Single-Door Intrepid II. This supplement explains any changes in operation and maintenance that apply to the newer model pending publication of a revised manual.

Operation

All other operating instructions of the two-door stove apply as well to the single door model.

The following conversions to metric measure may be made in this section:

1-2"	25-50 mm
3-5"	75-125 mm
3-4"	75-100 mm

Fahrenheit temperatures in this section may be interpreted in Celsius as:

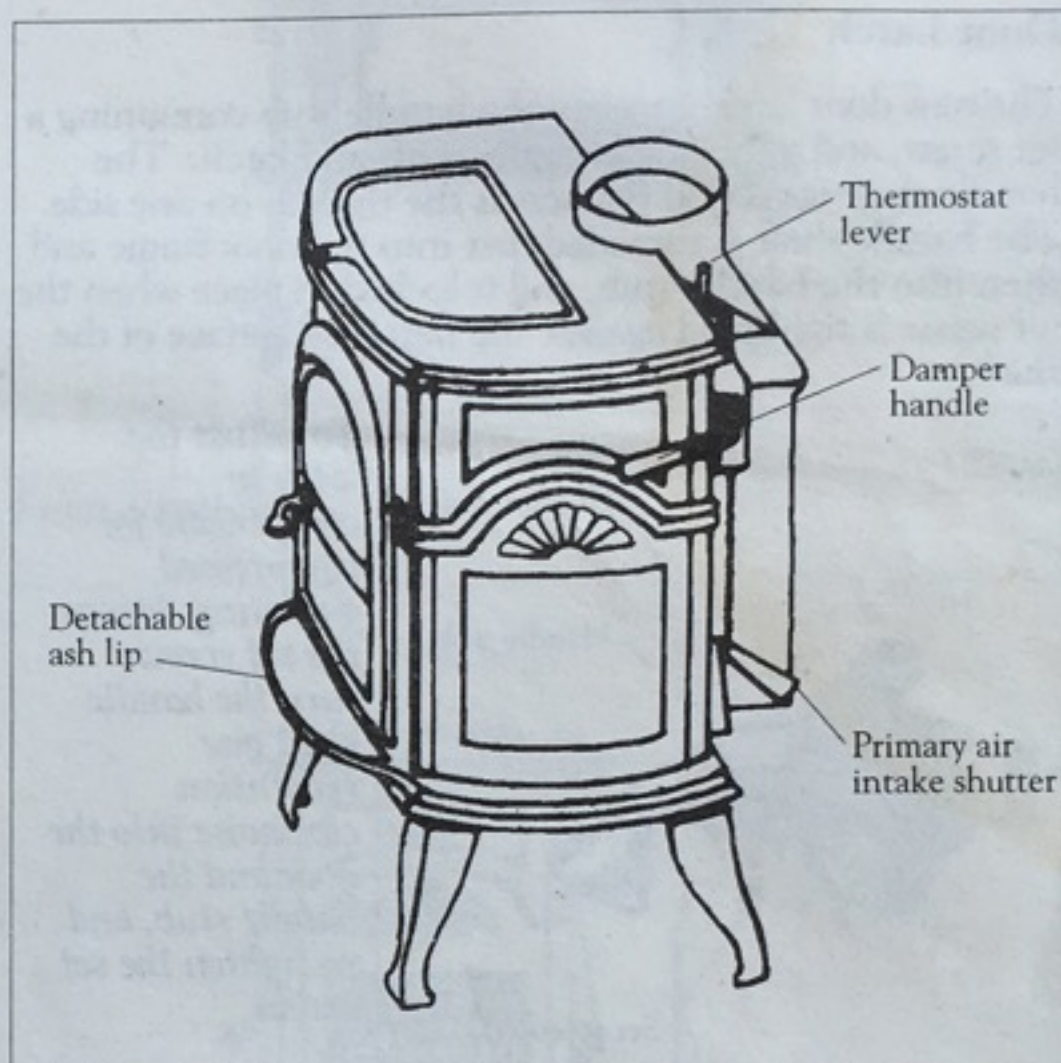
450°F.	230°C.
300-400°F.	150-205°C.
500-650°F.	260-340°C.
750°F	400°C.
450°F.	230°C.
350°F.	175°C.
750°F.	400°C.
350-400°F.	175-205°C.
400-450°F.	205-230°C.
500-600°F.	260-315°C.

The Inside Story

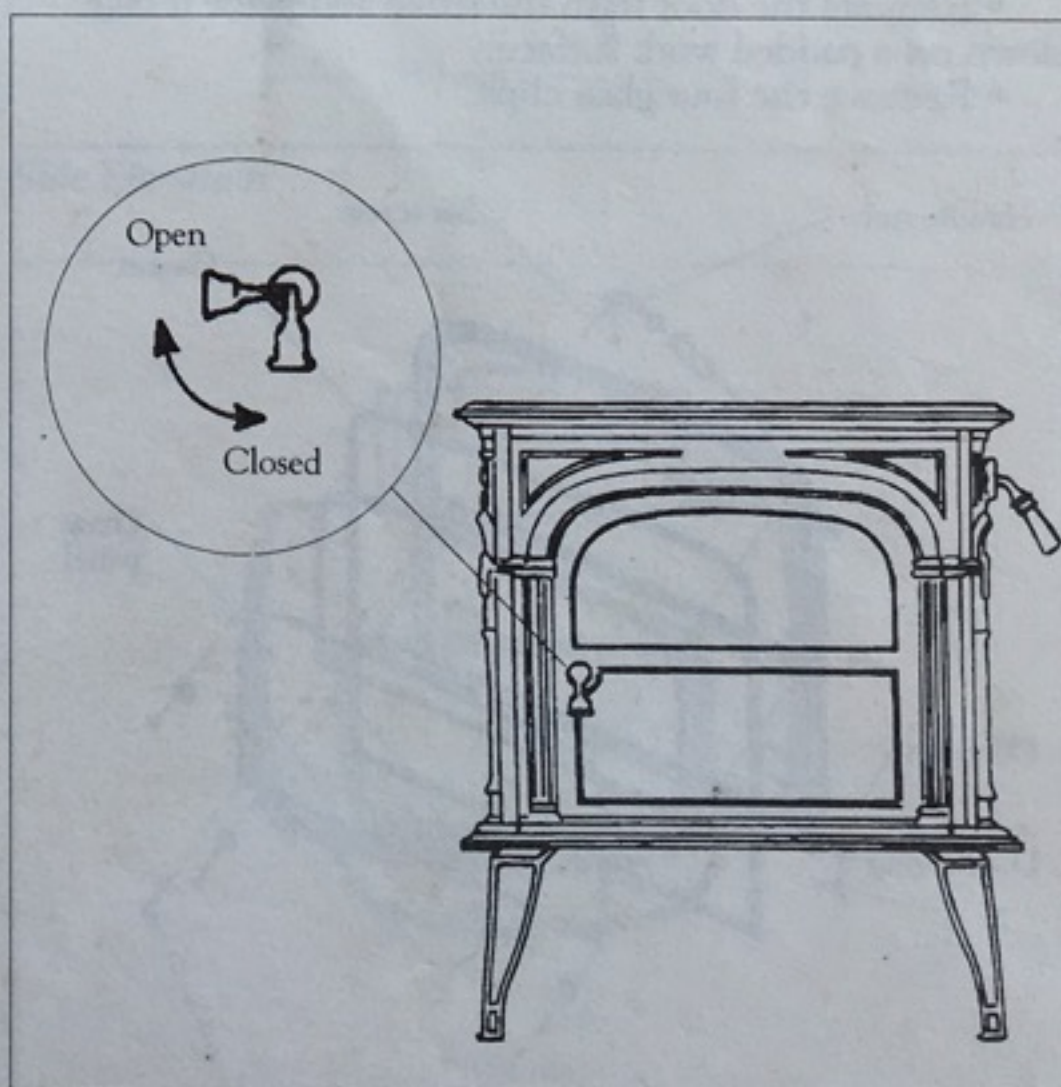
These are among the most visible changes of the single-door Intrepid II:

- The ash lip is removable, which makes stove installation easier.
- A spring is installed with the lower door pin to close the door automatically.
- A cast iron air deflector replaces the stainless steel air guide referred to on page 7 of the Owner's Guide.
- The single door provides a better seal and improved air control.
- Fire viewing is improved with the larger, single glass pane.

Otherwise, the combustion process remains the same in both models.



The location of the controls for the damper and the thermostat are the same as on the original Intrepid II.



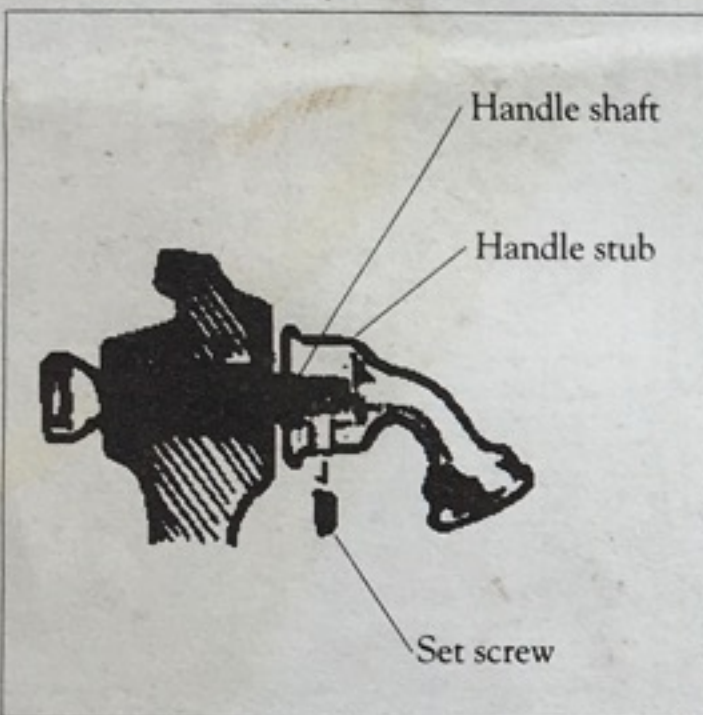
The Single Door opens when the handle is turned clockwise 1/4 turn, and is closed by turning the handle counterclockwise to the vertical position as shown above.

Maintenance

All maintenance intervals and procedures for the single door stove are similar to those for the two-door stove. However, there are differences in the procedures for adjusting the door latch and the removal/replacement of the glass the catalytic element.

Door Latch

The new door latch consists of a handle stub containing a set screw, and a threaded handle shaft and latch. The handle shaft is ground flat across the threads on one side. The handle shaft is threaded first into the door frame and then into the handle stub, and is locked in place when the set screw is tightened against the flattened surface of the shaft.

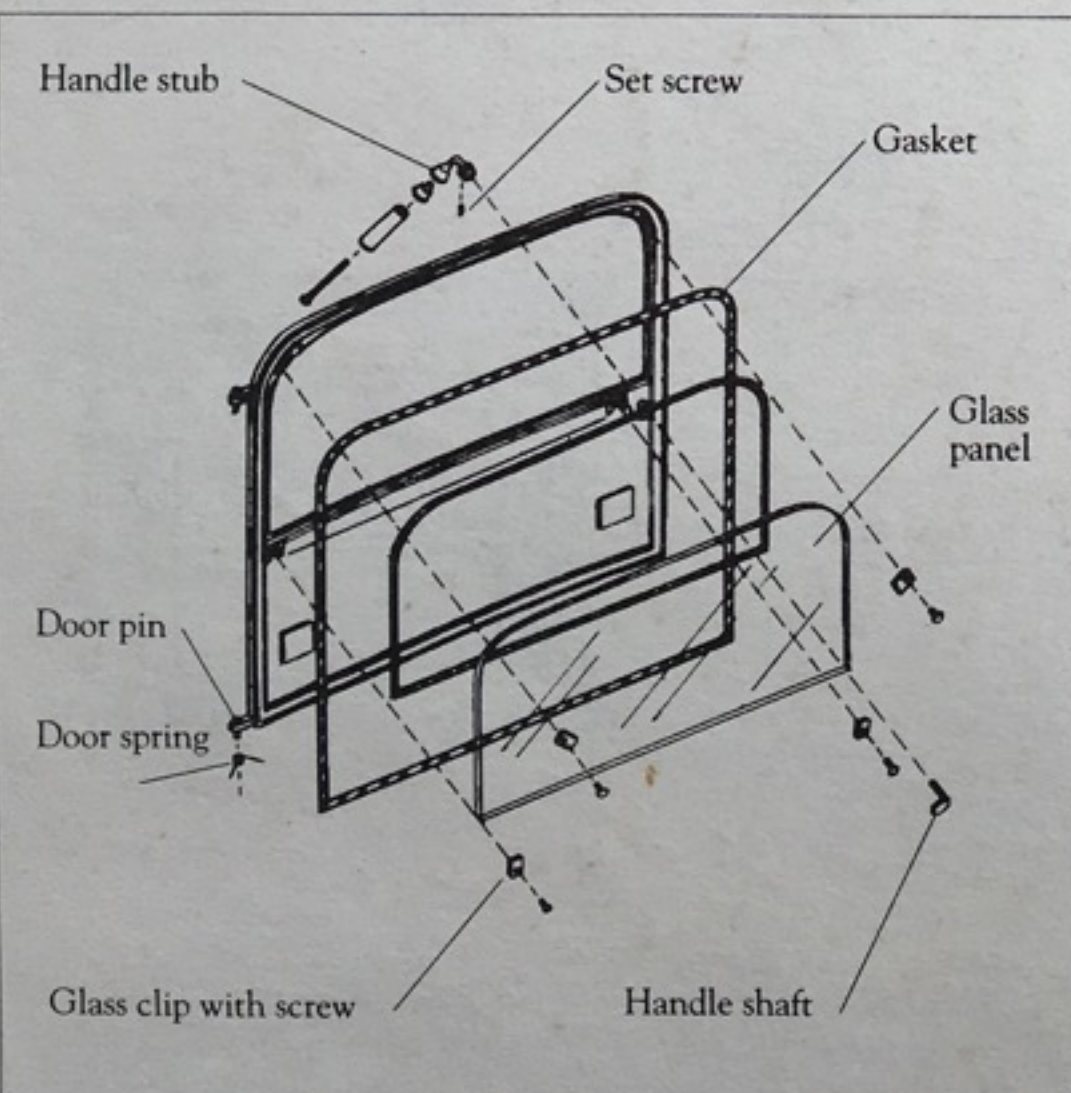


To adjust the latch to compensate for compressed gasketing, loosen the set screw, turn the handle shaft one revolution clockwise into the door and the handle stub, and re-tighten the set screw.

Glass Replacement

To replace the glass

- Remove the door from the stove and place it face down on a padded work surface.
- Remove the four glass clips.



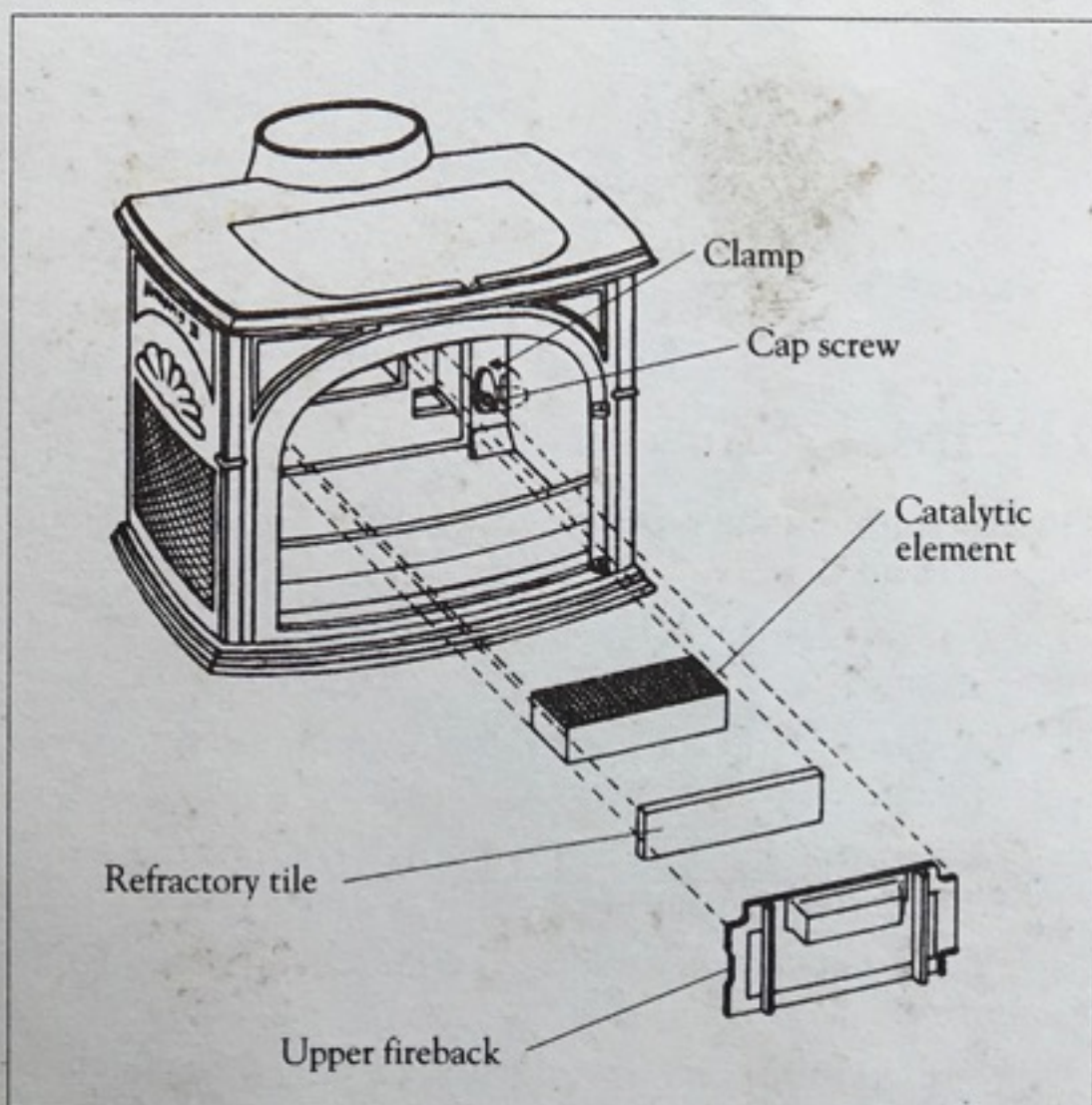
- Remove the damaged glass.
- Be sure the gasket around the window opening is in good condition. It must be soft and resilient so the glass will seal properly against the door and prevent air leakage.
- Replace the glass, using only the high temperature ceramic glass supplied by Vermont Castings.
- Secure the glass by replacing the clips. Alternately tighten the four screws until they are snug; do not overtighten.
- Replace the door.

The Catalytic Element

The element may be examined, cleaned, or replaced during cleaning of the refractory package.

Follow this procedure:

- Remove the ashes and clean the firebox.
- Remove the andirons, the air deflector, and the bottom grate.
- Turn by 90 degrees the two clamps (#23 on the exploded view drawing) that secure the upper fireback. Turn the left clamp clockwise, and the right clamp counterclockwise. If it is necessary to tap the clamps loose, use a small, soft-faced hammer.
- Grasp the upper fireback by the vertical ribs and remove it.
- Clean any ash and debris from the left and right exhaust pockets of the refractory package with a vacuum cleaner. Work with great caution to avoid damaging the fragile refractory material.
- Gently loosen and remove the refractory panel that covers the catalytic element. (The panel forms the lower edge of the opening into the refractory package.)
- If the element requires servicing, remove it by sliding it gently out of the refractory chamber. Remove ash by blowing gently through the element, and inspect it. Small cracks will not affect performance, but an element with loose or missing pieces should be replaced.
- If the element is in good condition, slide it back into



Identical catalytic elements are used in both Intrepid II's. However, access to the element in the single-door stove is through the front of the stove and the firebox.

the refractory chamber and reinstall the refractory panel.

- Inspect the gaskets that seal the upper fireback to the damper frame and the stove back to the lower fireback, and replace if necessary.

- Replace the upper fireback. Angle the right end in first. The lower right corner of the upper fireback must be inserted behind the cast iron ramp on the upper right of the rear air tube. Swing the left end of the fireback into position. Refer to the exploded view diagram as you work.

- Twist the tabbed ends of the right and left clamps down against the wedges cast into the stove back. Tap the clamps down until the tabs are horizontal.

- Replace the bottom grate, the air deflector, and the andirons.

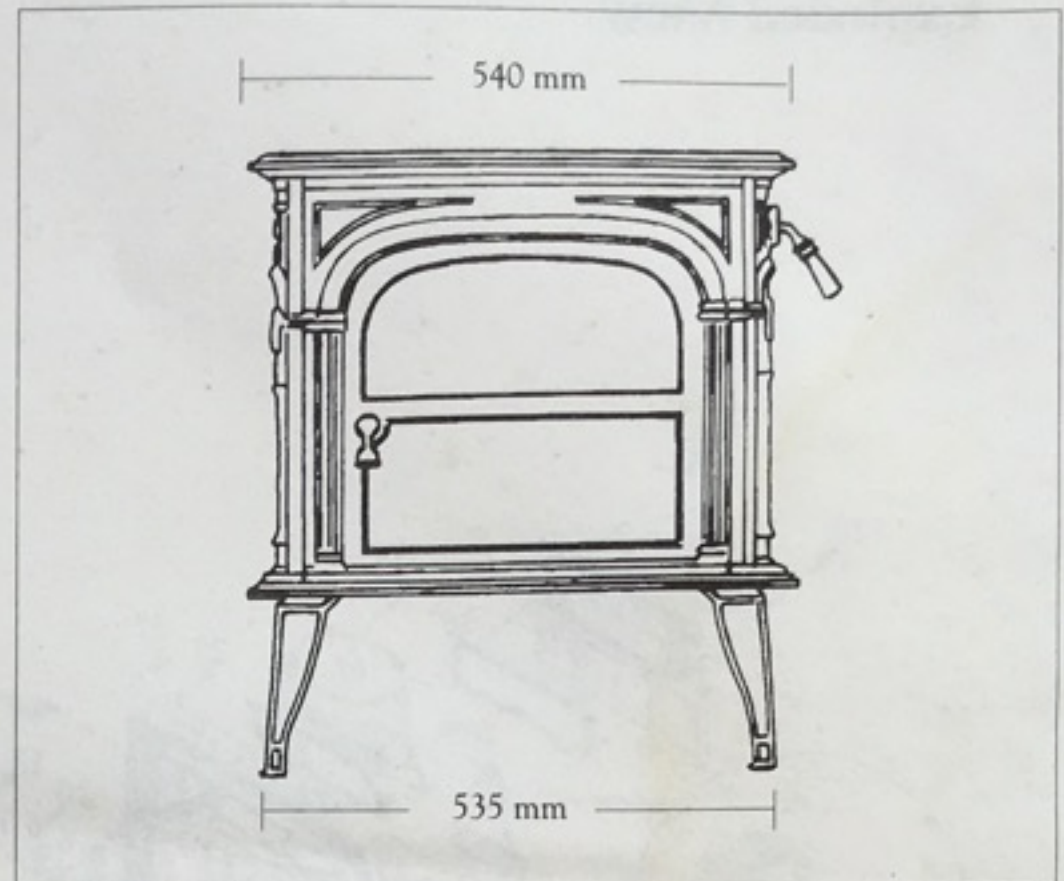
Gaskets

With the exception of the 8 mm door and 5 mm glass gasketing, other gaskets used in the single door stove are the same as those in the two-door stove. The metric equivalents for the gasketing diameters in this section are:

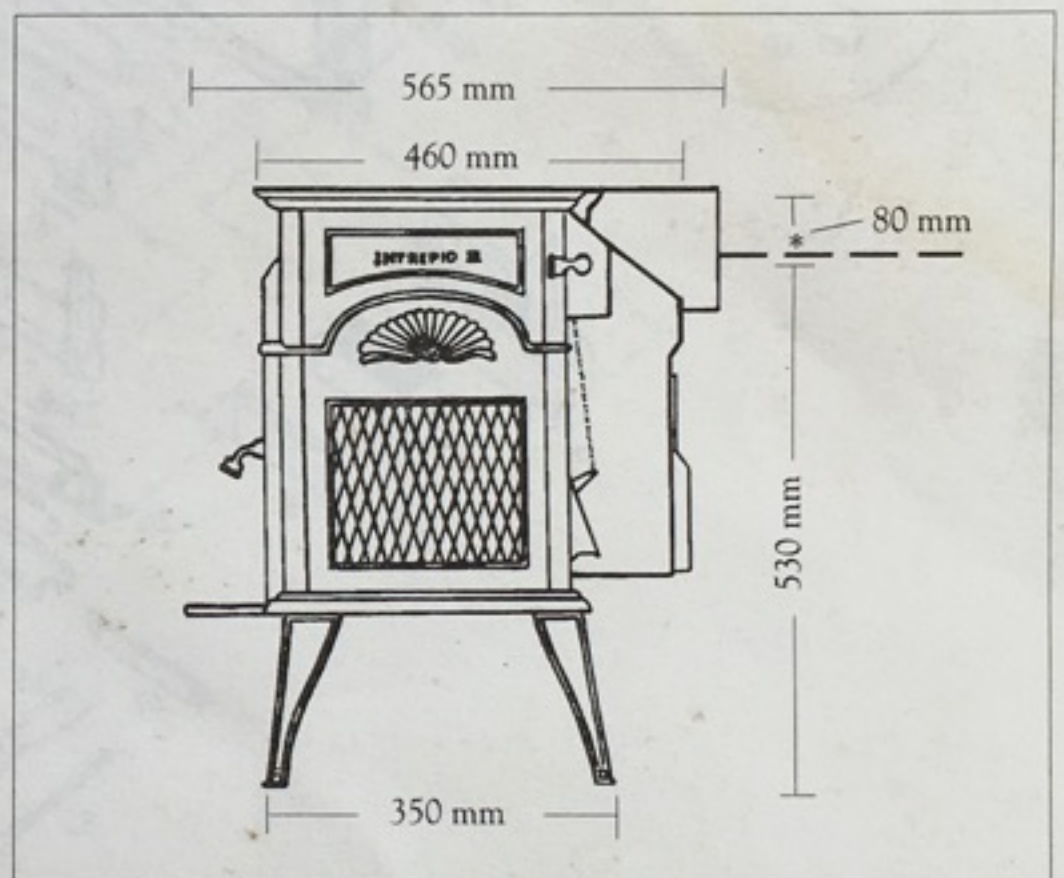
1/8"	3 mm
3/16"	5 mm
1/4"	6 mm
5/16"	8 mm
7/16"	11 mm

Specifications

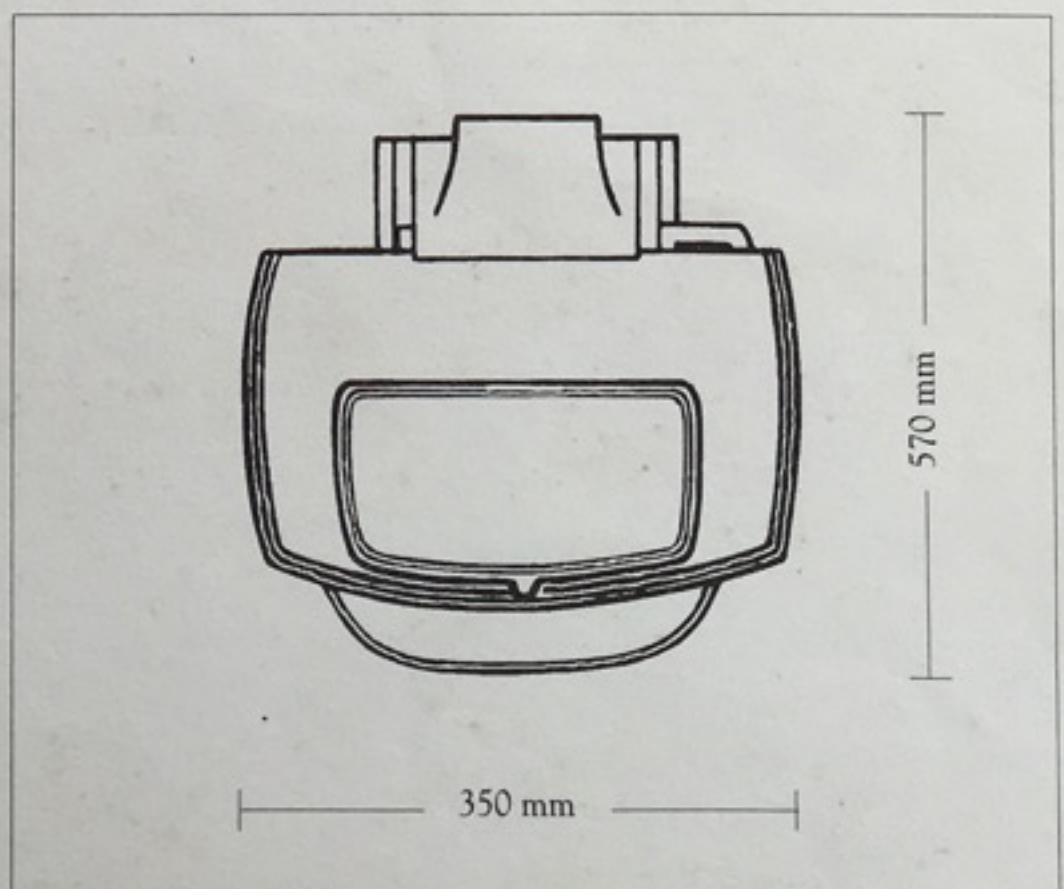
Fuel type	Wood logs
Log length	40 cm.
Fuel capacity	10 Kg.
Stove weight	115 Kg.
Heat range	2-7 kW
Area heated	20-50 m ²
Loading	Top or front
Flue exit positions	Top or rear
Air control	Thermostat
Secondary air	Self-regulating
Glass	High-temperature ceramic, 5 mm
Height, top exit	
Regular legs	635 mm
Short legs	535 mm
Plinth	570 mm
Height, rear exit	
Regular legs	610 mm
Short legs	510 mm
Plinth	545 mm
Width	
At top	540 mm
Leg-to-leg	535 mm
Depth	
Overall	540 mm
Leg-to-leg	350 mm



Front elevation

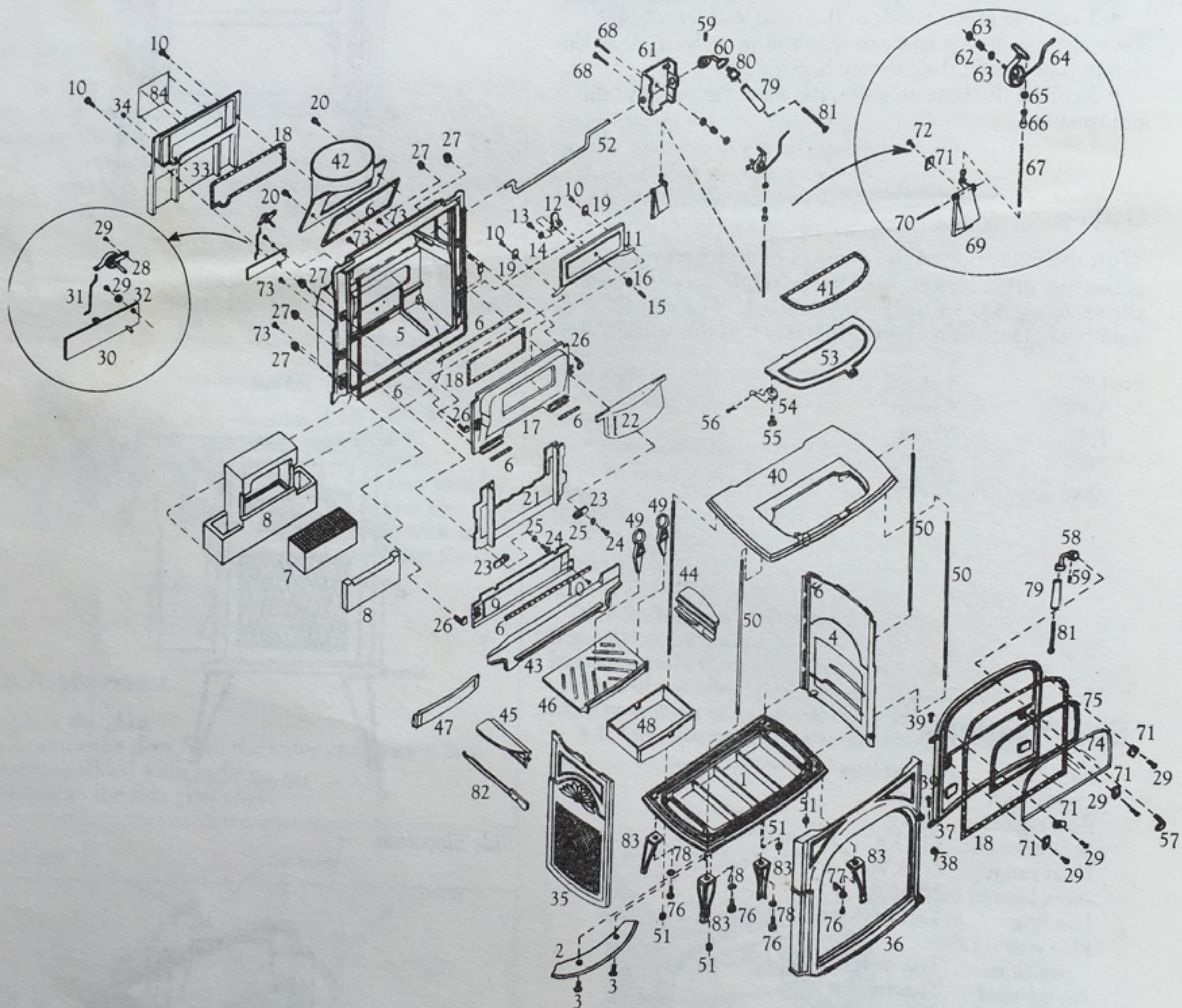


Side Elevation



Top elevation

Exploded View



Parts List

No.	Description	Part No.	Qty.
1.	Bottom, cast	130-6742	1
2.	Ash lip, cast	130-6738	1
3.	Hex head cap screw, 1/4-20 x 5/8"	120-1372	2
4.	Right end, cast	130-6723	1
5.	Back, cast	130-6707	1
6.	Gasket, fiberglass, 6 mm. dia., 3 ndl	120-3560	ft
7.	Catalyst block, canned	160-2521	1
8.	Refractory assembly	160-2518	1
9.	Lower fireback, cast	130-6704	1
10.	Phil rd hd mach scr., 1/4-20 x 1/2"	120-0895	5
11.	Damper, cast	130-6701	1
12.	"D" plate, damper, cast	130-6725	1
13.	Socket button hd cap scr., 1/4-20 x 5/8" blk	120-1529	1
14.	Washer, flat, narrow, 1/4" x 1/2" o.d.	120-2475	1
15.	Socket set screw, 1/2-20 x 3/4" cup pt. blk	120-0434	1
16.	Hex nut, 1/4-20	120-3210	1
17.	Damper housing, cast	130-6702	1
18.	Gasket, fbrgls, 8 mm. dia. med den 6 ndl	120-3588	ft
19.	Damper tab, 1/2" x 1"	160-1488	2
20.	Phil rd hd mach scr, 1/4-20 x 3/4" cad	120-0901	2
21.	Upper fireback, cast	130-6703	1
22.	Throat, cast	130-6705	1
23.	Clamp, rotating, cast	130-6724	2
24.	Hex hd cap scr, 3/8-16 x 1-1/2"	120-1456	2
25.	Washer, flat, 3/8" narrow	120-2560	2
26.	Weld screw, "I" 3/8-16, blk	120-1583	3
27.	Nut, acorn, 3/8-16 nickel	120-3130	5
28.	Probe assembly, secondary air	160-1489	1
29.	Phil pan hd mach scr, 10-24 x 1/4"	120-0980	6
30.	Flap secondary air, stainless steel	160-1490	1
31.	Link, wire, secondary air	160-1486	1
32.	Shim ring, 18 gauge wire	120-1986	1
33.	Cover plate, cast	130-6726	1
34.	Hole plug, 5/16", nickel plt.	120-1899	1
35.	Left end, cast	130-6709	1
36.	Front, cast	130-6735	1
37.	Door, cast	130-6737	1
38.	Spring, door	120-4871	1
39.	Pin, door, 3/16" dia. x 3/4", nickel plt.	160-0535	2
40.	Top, cast	130-6340	1
41.	Gasket, fbrgls/wire, 6 mm. dia. 4 ndl	120-3661	ft
42.	Flue collar, cast	130-6561	1
43.	Rear air tube, cast	130-6706	1
44.	Right air tube, cast	130-6713	1
45.	Left air tube, cast	130-6714	1
46.	Grate, cast	130-6712	1
47.	Air deflector, cast	130-6739	1
48.	Ash pan assembly	500-3521	1
49.	Andiron, drop-in, cast	130-6717	2
50.	Tie rod, 1/4-20, threaded ends	160-1640	4
51.	Hex top lock nut, 1/4-20	120-3211	4
52.	Damper actuator rod, 3/8"	160-2523	1
53.	Griddle, cast	130-6356	1
54.	Quadrant, griddle, cast	130-0810	2
55.	Hex hd cap scr, 1/4-20 x 1/2" blk	120-1338	2
56.	Hitch pin, #13	120-3031	2
57.	Shaft, door locking, 3/8-16	160-0625	1
58.	Handle stub door, nickel plt.	160-0610	1
59.	Socket hd set scr, 5/16-18 x 5/16" cup pt.	120-0563	2
60.	Handle stub, damper, nickel plt.	160-0608	1
61.	Thermostat cover, cast	130-6711	1
62.	Spring, compression	120-1846	1
63.	Washer, flat, #10 sae	120-2423	2
64.	Thermostat assembly, primary air	500-5506	1
65.	Jump ring, nickel plt.	120-1985	1
66.	Fitting, ball chain, #6, nickel plt.	120-1972	1
67.	Ball chain, #6, nickel plt.	120-1960	1
68.	Phil pan hd mach scr, 1/4-20 x 2"	120-0995	2
69.	Air flap, primary, cast	130-6710	1
70.	Pin, air flap, 1/8" x 1-1/2"	160-1551	1
71.	Clip, glass retaining, 1/2" x 5/8"	160-1394	5
72.	Phillips pan hd. machine screw, 10-24x3/8"	120-0983	1
73.	Phil trus hd mach scr, 10-24 x 1/2"	120-0998	4
74.	Glass pane	140-1137	1
75.	Gasket, fbrgls, 5 mm. dia. med. den 4 ndl.	120-3556	ft
76.	Hex hd cap scr, 3/8-16 x 1"	120-1432	4
77.	Holder, door/damper handle	160-0600	1
78.	Washer, flat, 3/8"	120-2488	3
79.	Handle, ceramic	160-0620	2
80.	Handle adaptor, insert	160-0650	1
81.	Oval hd mach scr, slotted, 1/4-20 x 3-3/8"	120-1294	2
82.	Slicer/poker assembly	500-5708	1
83.	Leg, cast	130-6333	4
84.	Label, export	160-1264	1



Vermont Castings, Inc.
Prince Street
Randolph, Vermont 05060
U.S.A.

Vermont Castings, Inc.
Unit 9, Prime Industrial Park
Derby
Derbyshire DE3 8YB
England

ings, Inc. All rights reserved. Parts and
e without notice.

Printed