

Jøtul Gas Atra 740 DS

Jøtul Gas Atra 740 DS Driftwood Layout and Kit

Installation and Operating Instructions - English	2
Fictures/Pictures	3



These instructions must be kept for future references.

Kit comprises:

1. 4 x 'S' Shaped Driftwood logs (All brown)
2. 4 x Straight Driftwood Logs (All brown)
3. 2 x Large Yellow Pebbles
4. 2 x Large Grey Pebbles
5. 2 x Scallop Shells (1 large, 1 Small)
6. Bag of grey ceramic embers (350 g)

Please keep these instructions for future use!

See pictures on page 3

Picture 1

- Place 4 pebbles in the centre of the burner as shown. Minimize overhang of flame ports as this could adversely affect combustion.
- Place embers carefully over burner surface between flame ports and to front of burner tray. Don't allow any to fall into flame ports by tipping them carelessly as this may adversely affect combustion and flame picture. Service calls will not be accepted for failure to follow these instructions.

Picture 2

- Working on the side away from the control knob, place 1 straight driftwood piece as shown resting on the front edge of the burner tray (**not** on the fuel retainer) and the pebbles as shown.

An **optional** scallop shell can also be placed on the front edge of the burner and metal area as shown. Do not cover the flame ports with it.

Picture 3

- Place 2 'S' shaped driftwood pieces as shown. Rest them on the burner tray at the very sides and the straight log in the centre. Rest on the pebbles, scallop shell or front edge of the burner as required.

Picture 4

- Working on the control knob side of the burner now, place a straight driftwood piece as shown. Rest on the burner edge and **not** the fuel retainer. The layout is the same as the other side so gently move the pieces slightly so they all fit together well.

Use the larger **optional** scallop shell on this side. Do not cover the flame ports with it.

Picture 5

- Place 2 large 'S' shaped driftwood logs as shown resting on the edge of the burner tray at the very sides and the pebbles, scallop shell or front burner edge as required in between. The ends should rest on the straight log in the middle.

Picture 6

- Place the 2 remaining straight driftwood logs at each side of the fuel bed as shown. Rest on the edge of the burner tray and against the side of the firebox and onto the previously laid logs in the centre.

The driftwood set is now ready for testing and commissioning.

Fig.1

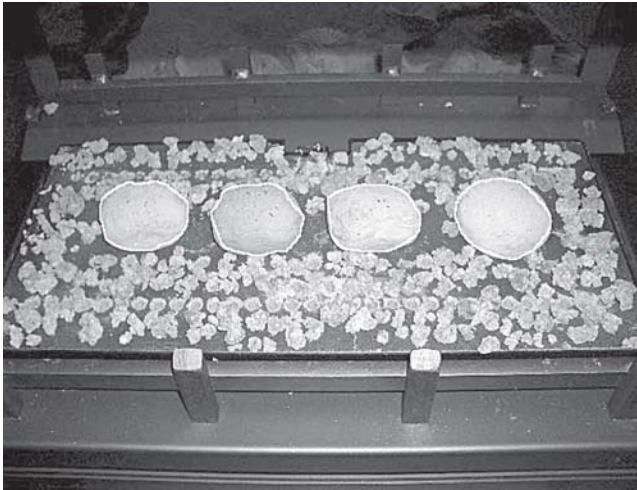


Fig.4



Fig.2

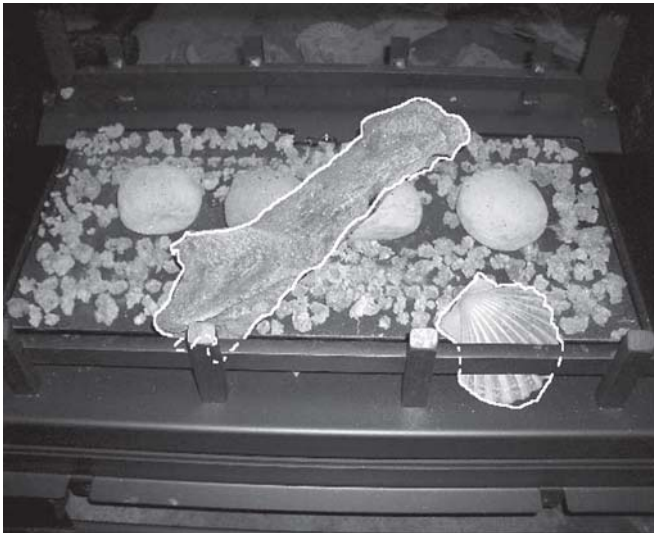


Fig.5



Fig.3

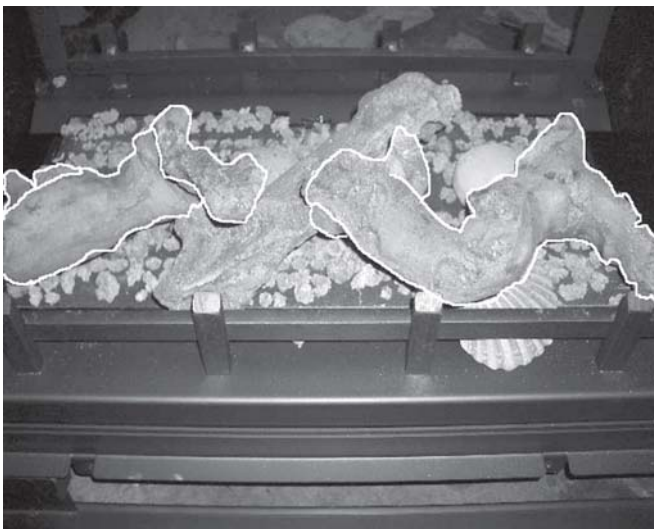
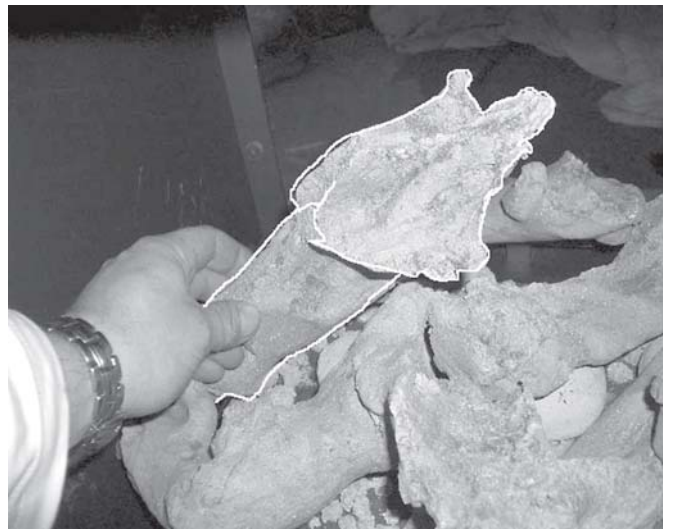


Fig.6



Cat.no.221605
Draw.no.4-4525-P00
Sep. 2005

Jøtul pursue a policy of constant product development. Products supplied may therefore differ in specification, colour and type of accessories from those illustrated and described in the brochure.

Quality

Jøtul AS has a quality system that conforms to NS-EN ISO 9001 for product development, manufacturing, and distribution of stoves and fireplaces. This policy gives our customers quality and safety piece of mind as a result of Jøtul's vast experience dating back to when the company first started in 1853.



Jøtul AS,
P.o. box 1411
N-1602 Fredrikstad,
Norway

This product has been controlled by:

_____ Date:

_____ Sign: