

FRANCO BELGE 

Installation Instructions
Electric Push Button Ignition Kit
for Oil Stoves
FB72620

Oil Stove Electric Ignition Kit (FB72620)

IMPORTANT:

The electric ignition element is fragile so care should always be taken when handling it.

The control box **MUST** be fixed to the body of the stove ensuring it is correctly earthed.

NEVER work on the stove or ignition kit with the mains lead plugged into the mains electricity supply.

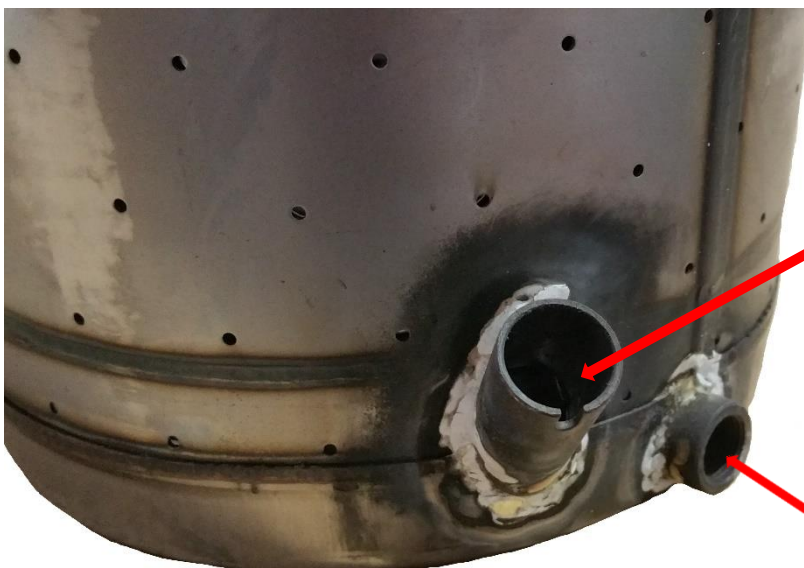
Always follow the lighting instructions, as failure to do so could lead to the burner going “turbo” due to there being too much oil in the burner pot.

Ensure that the burner pot is free of oil before fitting the ignition kit.



The electric ignition kit can be installed on any Franco Belge oil stove where there is an existing ignition kit fitted or it has the port in the burner pot to enable the kit to be installed. If there is no port then a burner with a port will need to be fitted to the stove before the ignition kit can be installed, these can be obtained from your local distributor.

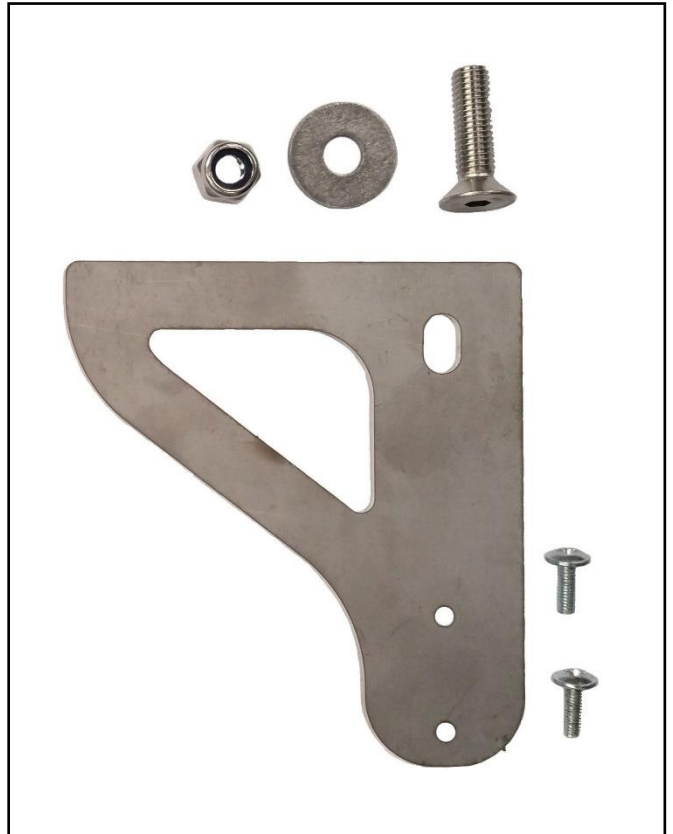
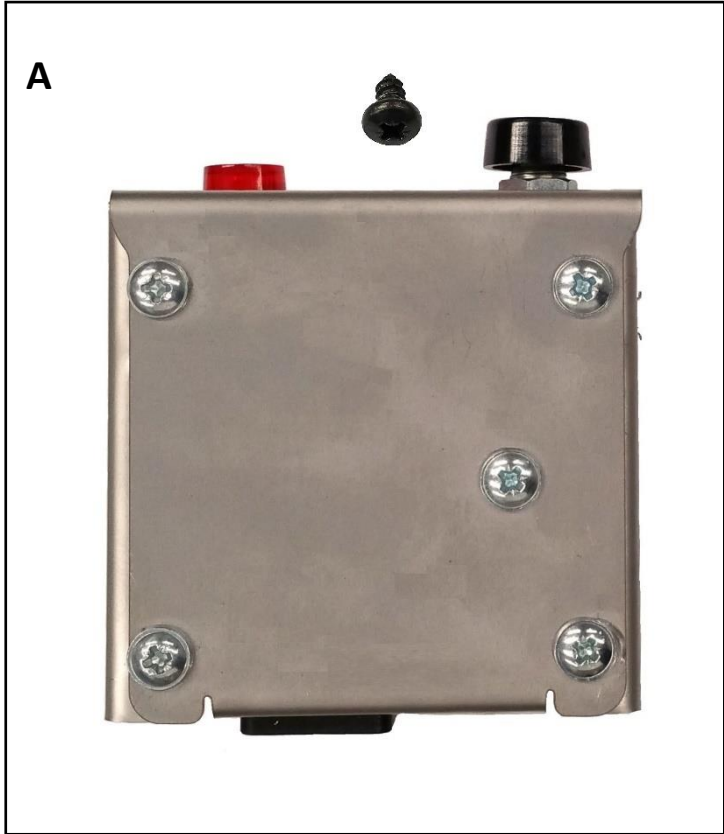
Model	Burner pot part number
Belfort	FB905328
Savoy	FB905330
Burgundy	FB905324



The ignition port on the side of the burner, can also be called the swan neck.

De-scaler assembly fits into this port.

The Ignition Kit (FB72620) components including 1.8m power lead.



Components A.

The control box and self-tapping screw.

If you are fitting the kit to the Belfort you use both of these items. If fitting it to the Savoy and Burgundy/Bourgogne only the control box is needed.

Components B.

The support bracket, Allen headed screw, washers, nuts and two Philips head screws.

These are needed when fitting the kit to the Savoy or Burgundy/Bourgogne stove. Not required when fitting it to the Belfort.

Components C.

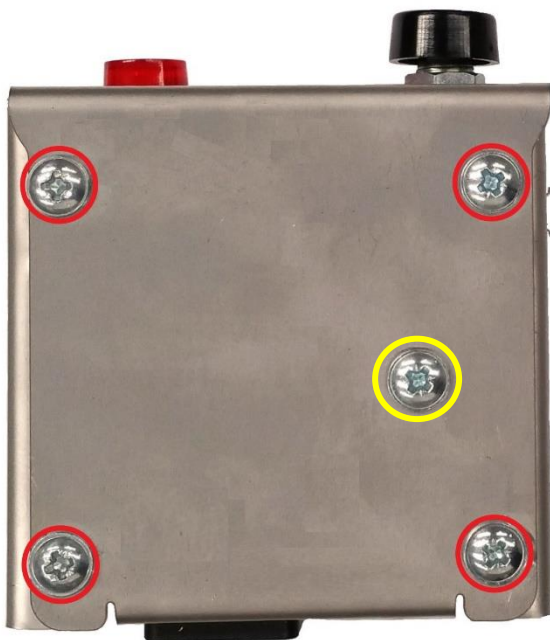
Igniter with adjustment ring and grub screw. This is used on all models.

Installation of the control box to the Belfort oil stove



Locate on the rear heatshield the self-tapping screw (1) and the hole (2) as it is to these two points that the control box is fitted.

Remove the self-tapping screw (1) and place somewhere safely as it is needed again to mount the control box.



Remove the 4 screws, highlighted, from the control box and separate the mounting plate from the box.

DO NOT remove the screw marked in yellow.

This holds the earth lead in place and should not be touched.



Fix the mounting plate to the heat shield using the self-tapping screw (1) which was removed previously and the self-tapping screw from components A.

Fit the control box onto the back plate and secure with the 4 screws. Check that the unit is level, if not remove the box and adjust the back plate accordingly.



Installation of the control box on the Savoy and Burgundy/Bourgogne oil stove

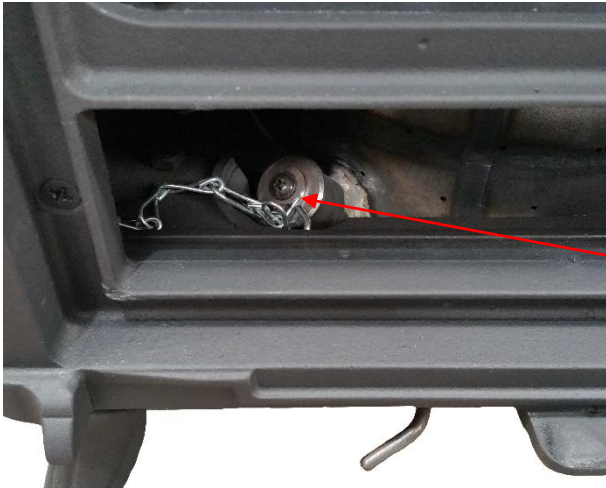


On the left-hand side there is a mounting point cast into the side panel.

The triangle shaped bracket should be attached at this point using the Allen head screw washer and nut. The control box can then be secured to the bracket using the 2 Philips head screws.



Installation of the igniter



Open the door of the stove which will allow you access to the ignition port.

Remove the ignition port plug and move to one side, out of the way.

Feed the plug end of the igniter cable down through the stove next to the igniter port and draw it towards the back of the stove.



Push the white plug into the socket at the bottom of the control box.

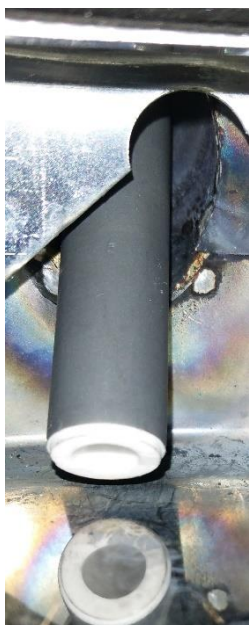


Take the igniter height adjustment ring and wind in the grub screw a few turns.



Slide the height adjustment ring up the body of the ceramic element and wind it onto the thread.





Insert the igniter into the ignition port on the burner.

The end of the igniter should be 2mm from the base of the burner pot, never touching as this could damage the igniter. Adjust the height adjustment ring to give the correct gap and then tighten the grub screw to fix the position using a 2.5mm Allen key.

Placing something 2mm thick under the igniter's end is the best way of ensuring the correct gap between igniter and burner pot.

Ensure that the igniter is sitting square in the hole so no excess air can leak past it and effect combustion within the burner.

Connect the black power cable to the control box and to the nearest available socket.

Press the igniter button on the control box and check that the indicator light illuminates.

Open the door of the stove and again press the igniter button and ensure that the ceramic element glows bright red. This will take about 30 seconds.

Once fitted you MUST explain the lighting procedure, to the customer to ensure that they are lighting the stove correctly.



Lighting you Stove with Push Button Ignition

Turn the oil control knob, on the top right-hand side of the stove, to position "2". The ignition button on the rear of the stove should be pressed and held down until the oil ignites. The indicator light next to the push button will illuminate to show that the ignition system is operating and the oil will normally light within 1 to 1½ minutes, a popping sound may be heard as it ignites, then the ignition button should be released.



Off Position



Ignition Button



Lighting Position

Once lit the stove should be left at this setting, position number "2" until the burner, stove and flue have warmed sufficiently to allow a stable burning at higher or lower settings.

This can take from ½ to 1 hour dependent upon the flue construction and external weather conditions.

If the burner fails to light after two minutes, do not continue attempting to light the stove; turn off the oil control knob and refer to the fault-finding section of the stove installation manual.

If the stove has not been lit for some time or for the first time

Ensure that there is no oil in the bottom of the burner before following the lighting procedure.

It may also help with lighting to open the door a crack (the thickness of your little finger), for the first 2 minutes, just to allow some extra air to enter the burner until a flue draught is established. The stove must NEVER be left unattended when the door is open.