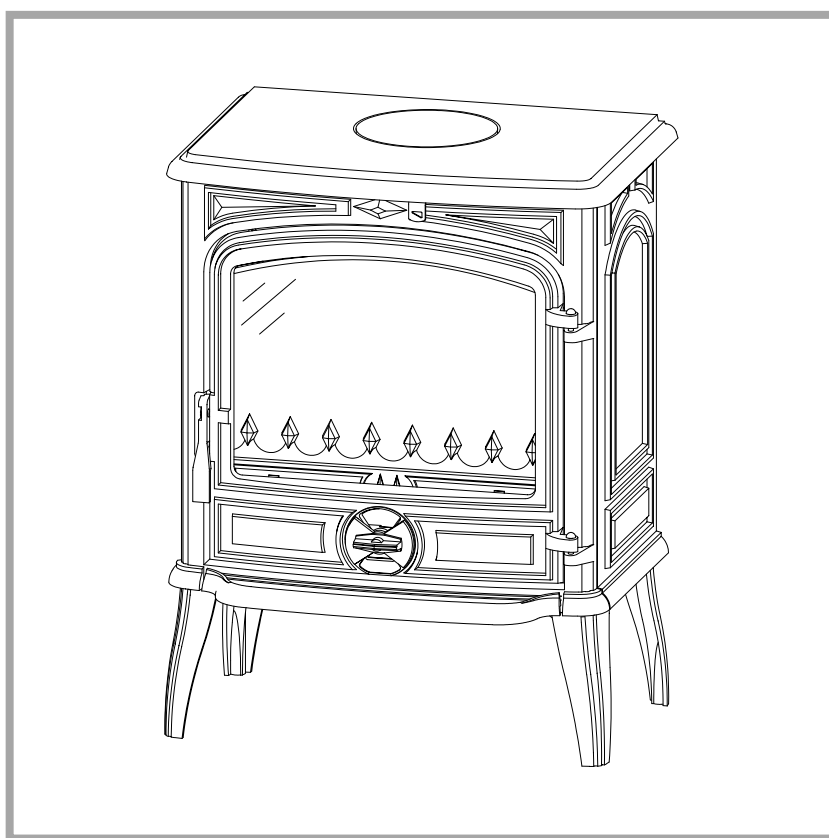

SAVOY

Wood stove

Model : 134 08 02

Output : 8 kW



Description of the appliance

Installation instructions

Operating instructions

Spare parts

Warranty certificate

Document n° 955-8 ~ 22/02/2005

FR EN ES NL PT

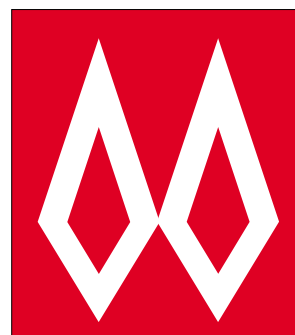
PL ČE

Technical manual

to be saved

by the user

for future reference



FRANCO BELGE

STAUB FONDERIE

SARL with the capital of 6 359 540 €

Head Office Address

2, rue Saint Gilles

68230 TURCKHEIM

RCS Colmar

SIREN 444 881 953

Address

Administration and manufacturing

BP 73

59660 MERVILLE (FRANCE)

Telephone : 00 333 28 43 43 00

Fax : 00 333 28 43 43 99

Subject to modifications.

FRANCO BELGE congratulates you on your choice.
FRANCO BELGE, which has been granted the ISO 9001 certification, guarantees the quality of its appliances and is committed to meet its customers' needs.
FRANCO BELGE, which can boast a 75-year experience in the industry of heating devices, uses state-of-the-art technologies to design and manufacture its whole range of products.
This document contains instructions on how to install your appliance and make full use of its functions, both for your comfort and safety.

CONTENTS

Product information p. 3	
Package p. 3	Description p. 3
Optional. p. 3	Principle of operation p. 3
General characteristics p. 3	
<hr/>	
Installation instructions p. 4	
Warning to the user p. 4	Door closing pressure p. 6
Location of the unit p. 4	Mounting the tray p. 6
Chimney p. 4	Pre-utilisation check p. 6
Chimney connector p. 4	Maintenance of the Chimney p. 6
Assembly of flue spigot p. 5	
<hr/>	
Instructions for user p. 7	
Fuel p. 7	De-ashing p. 8
Lighting p. 7	Recommendations p. 8
Operating procedure. p. 8	Maintenance of the stove body p. 8
Loading the fuel p. 8	Trouble Shooting. p. 9
<hr/>	
Spare parts p. 10	

This appliance is meant to burn wood safely

Warning

An incorrectly installed wood stove can cause serious accidents.
 This appliance should only be installed by competent personnel, in the strict application of normal practices and all safety precautions.

1. Product information

1.1. Package

- 1 package : Stove complete.

1.2. Optional

- Boiler
- Coal grate
- Set of 4 short legs

1.3. General characteristics

Reference	134 08 02
Maximum output kW	8
Chimney draft required. Pa	20
Usable firebox dimensions	
- width mm	450
- depth mm	240
- height. mm	365
Log dimensions	
- Length. cm	40
- Diameter cm	10 à 16
Ash pan capacity. litres	3
Net weight. kg	100
Volume heated m ³	300
Autonomy. h	10

1.4. Description

- Wood stove
- Continuous-burning heating appliance.
- Wood burnt on grate
- Enclosed combustion chamber with refractory brick walls.
- Removable appliance, to be installed near a wall.
- Detachable flue spigot for rear or top chimney connection.
- Detachable top for easy handling and cleaning (rear smoke exit only).
- Adjustable air controls for controlling the burning rate.
- Spin wheel for lighting.
- De-ashing access
- Large ash-pan.

1.5. Principle of operation

The appliance is designed for operation with the door closed. Heat is mainly diffused by radiation, through the window and body of the appliance.
 Combustion occurs on the grate, with draught entry through the top of the combustion chamber when using wood and under the grate when using coal.

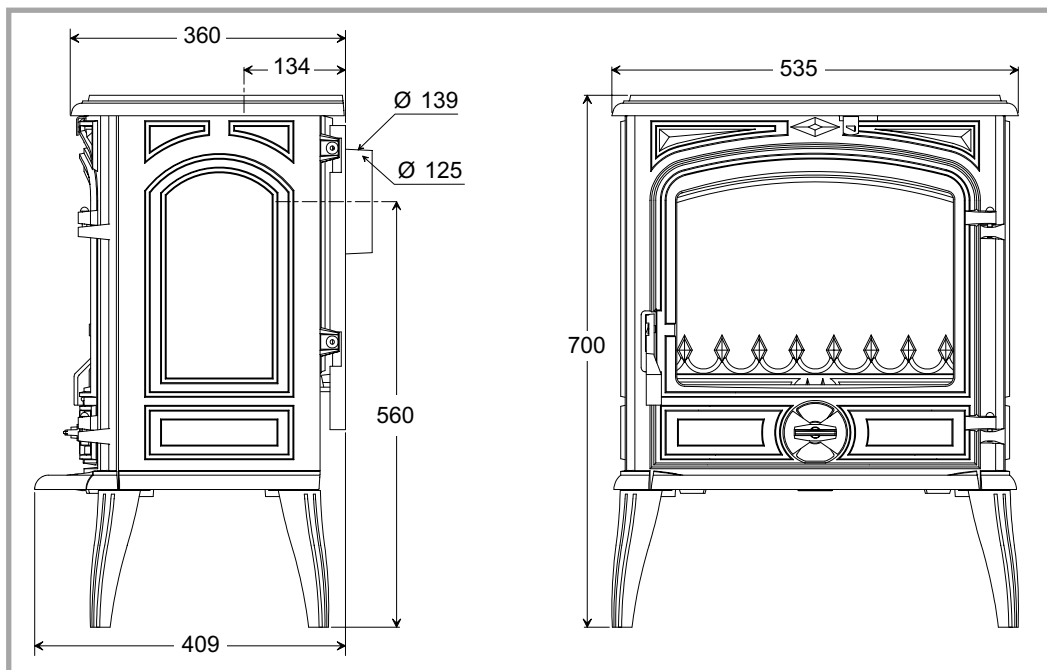


Figure 1 - Dimensions in mm

2. Installation instructions

2.1. Warning to the user

An incorrectly installed heating appliance can cause serious accidents (chimney fires, burning of plastic insulation materials, in partition walls, etc.).

The installation must comply with Current Building Regulations. If in doubt, consult your Dealer or local Building Inspector.

It is the installer's responsibility to conform to local building standards and requirements with regard to installation.

The manufacturer's responsibility shall be limited to the supply of the equipment

2.2. Location of the unit

Ventilation :

For satisfactory operation with a natural draught, check that sufficient air for combustion is available in the room.

In houses equipped with mechanical ventilation, an outside air intake must be installed for the chimney.

Position of the unit :

For new chimney installations, select a central position within the building, to provide a good heat distribution around the building.

The heat distribution towards the other rooms will be made through the communicating doors. These rooms must be in negative pressure or must include ventilation gratings.

Hearth :

The hearth must be suitable for use with solid fuel burning appliances and must comply with Current Building Regulations. If in doubt, consult your Dealer or local Building Inspector.

Rear wall and ceiling :

The appliance must not be positioned close to combustible materials, wall & ceiling surfaces etc., Consult your Dealer or local Building Inspector if in doubt.

2.3. Chimney

The chimney must comply with Current Building Regulations. If in doubt, consult your Dealer or local Building Inspector.

Existing flue :

The flue must be in good condition and must provide sufficient draught (refer to technical details p. 3).

The flue must be suitable for the installation of fuel burning appliances, otherwise it must necessary to install a tubing.

The flue must be clean. It should be swept to remove soot and dislodge tar deposits.

The flue must be well insulated. If the flue inner wall surfaces are cold, a good thermal draw is impossible causing condensation problems (tar formation etc) to occur.

The flue must be watertight.

The flue must not be shared with other appliances.

The chimney must have a constant cross section.

When the cross-section of the chimney is too large, it has difficulties in obtaining a good draught.

The recommended minimum flue height is 5 metres.

In case of a flat roof or when the roof gradient is lower than 15°, the stack must be 1,2 m (4 feet) high at least.

If the chimney has any down draught tendency, due to its position in relation to nearby obstacles, then an anti-down draught cowl must be installed on the chimney or the chimney height must be increased.

If the chimney draught is excessive or irregular, a draught stabiliser must be installed.

The chimney must comply with Current Building Regulations. If in doubt, consult your Dealer or local Building Inspector.

The appliance must not support the weight of the flue.

Consult a chimney specialist for advice on suitable flue systems for solid fuel appliances.

It must be distant from any combustible material (walls, cross members)

It must permit an easy sweeping.

2.4. Chimney connector

The connection to flue must be carried out according to local building regulations.

The stove must be installed as close as possible to the chimney.

The connector pipe must be approved for installation with combustion products (either 24 ga. Black painted or blued steel or 316 grade 20 ga. Stainless steel or 1 mm vitreous enamelled steel)..

Pipe diameter must not be less than the appliance spigot diameter. Otherwise the reducing must be 1 diameter lower than the flue spigot and be situated as distant as possible from the flue connection of the appliance.

The connection can be either vertical or horizontal. For horizontal connections, avoid right angle bends.

The join between the connection pipe and the stovepipe, and the flue, must be leak tight.

The connection pipe and any draught stabiliser must have access for cleaning.

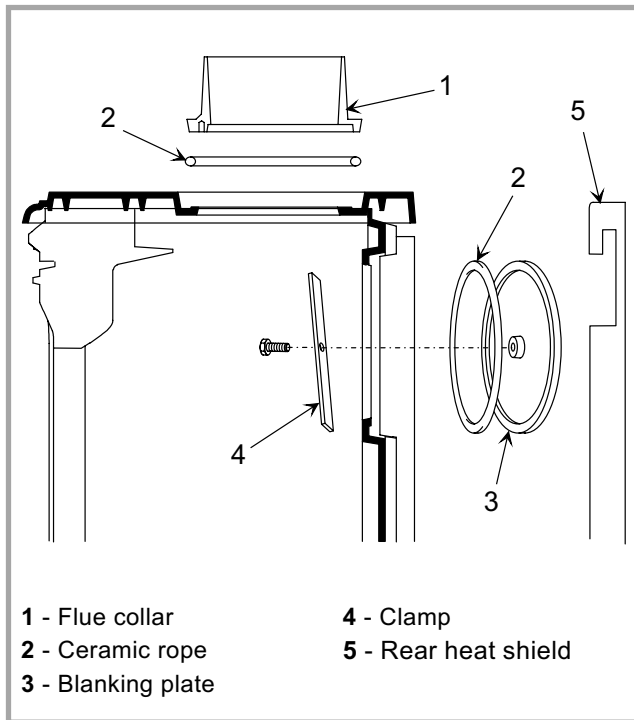


Figure 2 - Smoke exit on the top

2.5. Assembly of flue spigot

The stove is supplied with a connection flue spigot with an inner diameter of 125 mm and an outer diameter of 139 mm.

2.5.1. Smoke exit on the top

Figure 2

- Fit the sealing rope 2 in the groove on the top and fix the flue collar 1 with 3 bolts and washers supplied.

2.5.2. Smoke exit at rear

Figure 3

- Remove the rear heat shield and remove the preformed hole plate.
- Remove the retainer fuel (fig. 6, p. 6), the two side bricks # 23 and 24 p. 11) and the flue baffle (fig. 7, p. 6).
- Remove the blanking plate 3 and the clamp 4 and assembly in the top, ensuring there is a good seal.
- Fix the flue collar 1 at rear with 3 bolts and washers supplied, ensuring there is a good seal.
- Replace all the internal parts in the reverse order.
- Replace the rear heat shield.

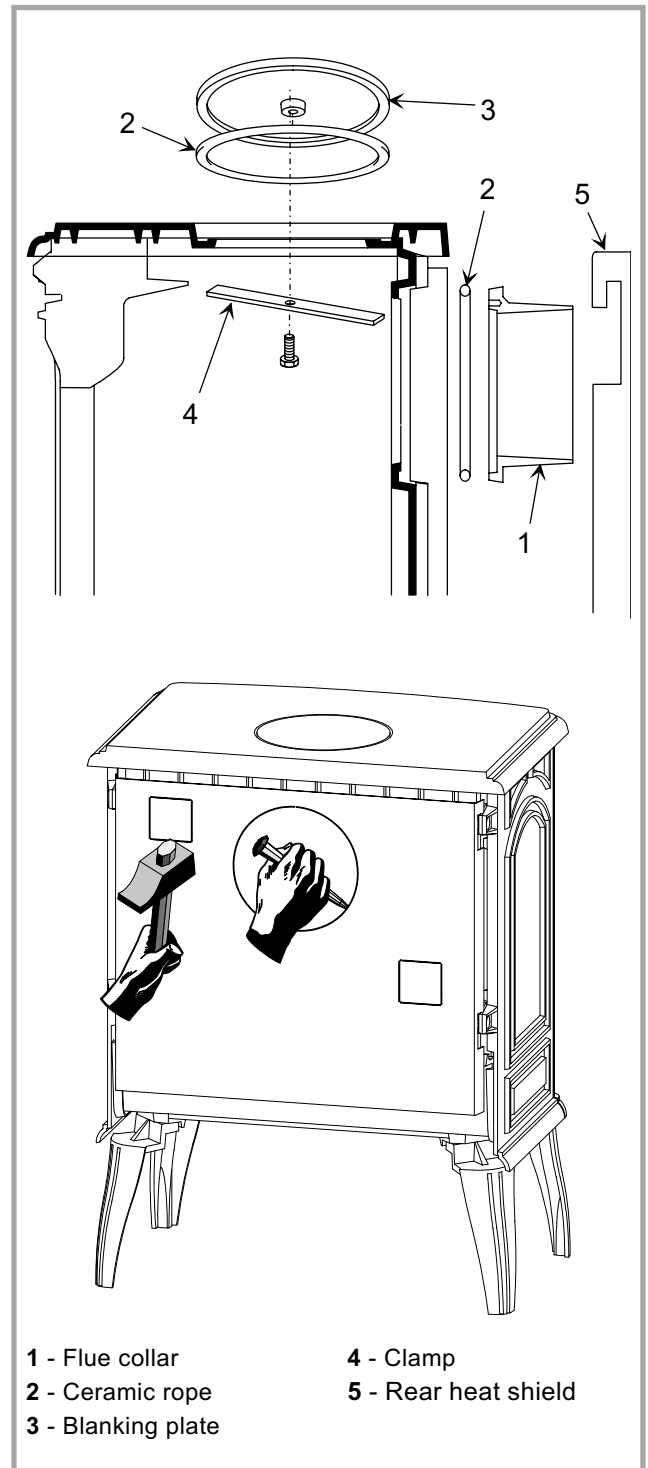


Figure 3 - Smoke exit at rear

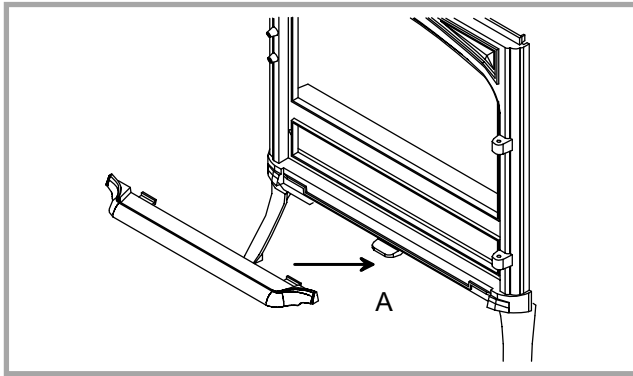


Figure 4 - Mounting the tray

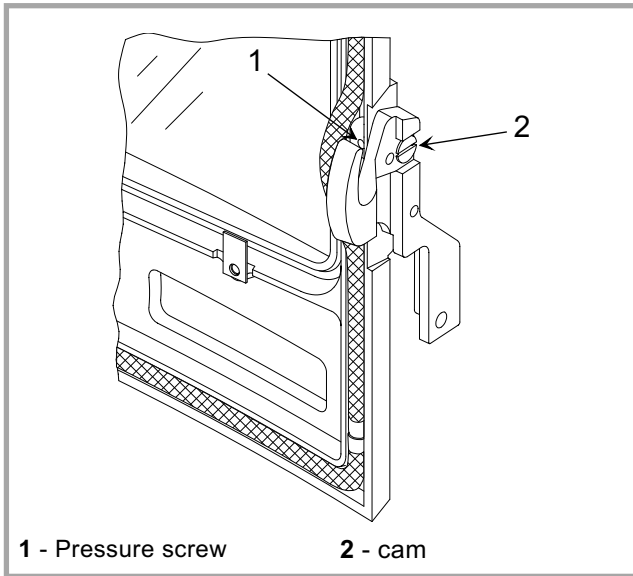


Figure 5 - Door closing pressure

2.6. Door closing pressure

Figure 5

The closing latch rotates around a pressure screw positioned cam.

- Remove gently the ceramics rope
- Loosen pressure screw 1.
- Turn cam 2 to desired position.
- Tighten pressure screw 1.

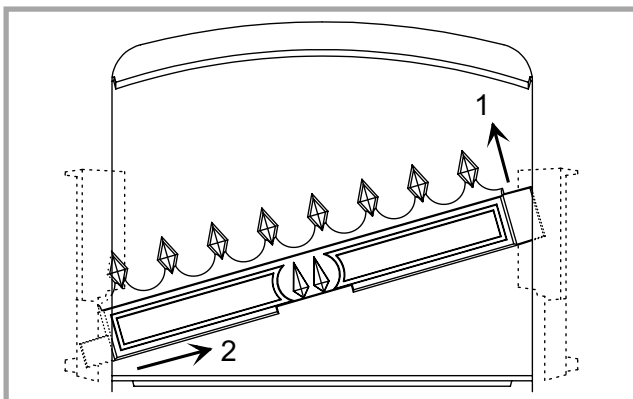


Figure 6 - Removing the fuel retainer

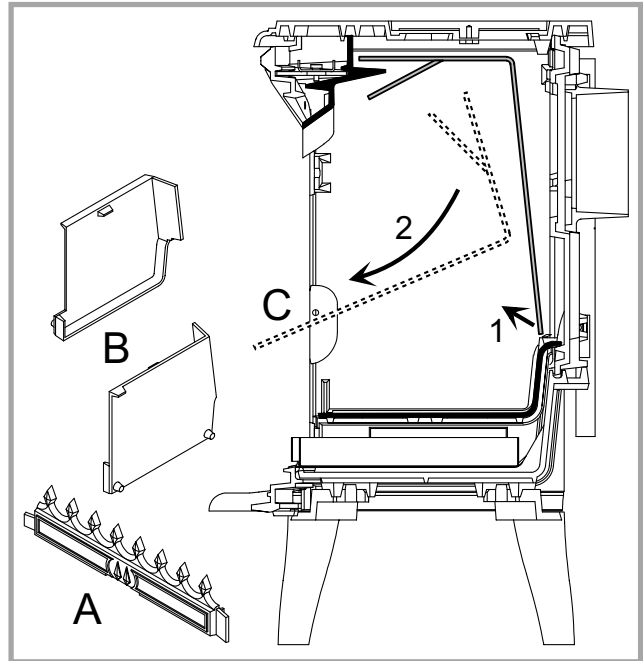


Figure 7 - Removing the flue baffle

2.7. Mounting the tray

To avoid damage during transport, the tray has been stored behind the main door.

- Center the tray on tab “A” and lower into place (ill. 4).

2.8. Pre-utilisation check

- Check that the glasses are not damaged.
- Check that the smoke passages are not obstructed by packaging or removable parts.
- Check that the seals of the smoke-line are in good condition.
- Check that the doors close correctly.
- Check that all removable parts are correctly installed. (bricks, flue baffle, etc.)

2.9. Maintenance of the Chimney

In order to avoid any incident (chimney fire, etc...), maintenance tasks must be carried out regularly.

If the appliance is regularly used, the chimney should be swept several times per year, together with the stovepipe connection section.

First remove the retainer grate (fig. 6), the two side bricks and the flue baffle (fig. 7).

Replace all parts in the reverse order.

Chimney condition should be checked at least once per year.

3. Instructions for user

The manufacturer will not be responsible for damages on parts of the appliance due to the use of prohibited fuel or due to an alteration of the appliance or its installation.

3.1. Fuel

- **Recommended fuel : Wood** with the grate provided
Use hard wood logs, which have been cut for at least two years and stored, under shelter.
Hardwood has a higher calorific value per cu metre (oak, ash, maple, birch, elm, beech, etc.).
Large logs must be split and cut to a usable length, before being stored in a sheltered and ventilated place.
- Recommended fuel with the coal grate 308711**
Smokeless fuels, including coolite nuts, phurnacite, ancit and extracite.
- **Not recommended as fuel :**
“green wood”. Green or damp wood reduces stove efficiency and soils the glass, the internal walls and the flue (soot, tar, etc.).
“used timbers”. Burning treated wood (railway sleepers, telegraph poles, offcuts of plywood or chip board,

pallets, etc.) quickly clogs the flue ways (soot, tar, etc.), pollutes the environment (pollution and smell, etc.) and cause the fire to burn too quickly and overheat.
“Green wood” and “recovered wood” can eventually cause a chimney fire.

- **Prohibited fuel :**
Any form of bituminous coal or petroleum based coke.

3.2. Lighting

Figure 8

- Slide the top air control (# B1) to the right. Open the lower spin wheel (# C1).
- Open the main door.
- Lay firelighters or rolled up newspapers on the grate with a reasonable quantity, if necessary, of dry kindling wood. Place 2 or 3 small logs on top.
- Light the newspaper or firelighters using a long taper and close the door (# A).
- When the fire is burning fiercely, add further logs of a diameter up to 10 cms.
- When the stove body is very hot, close the lower spin wheel (# C2).

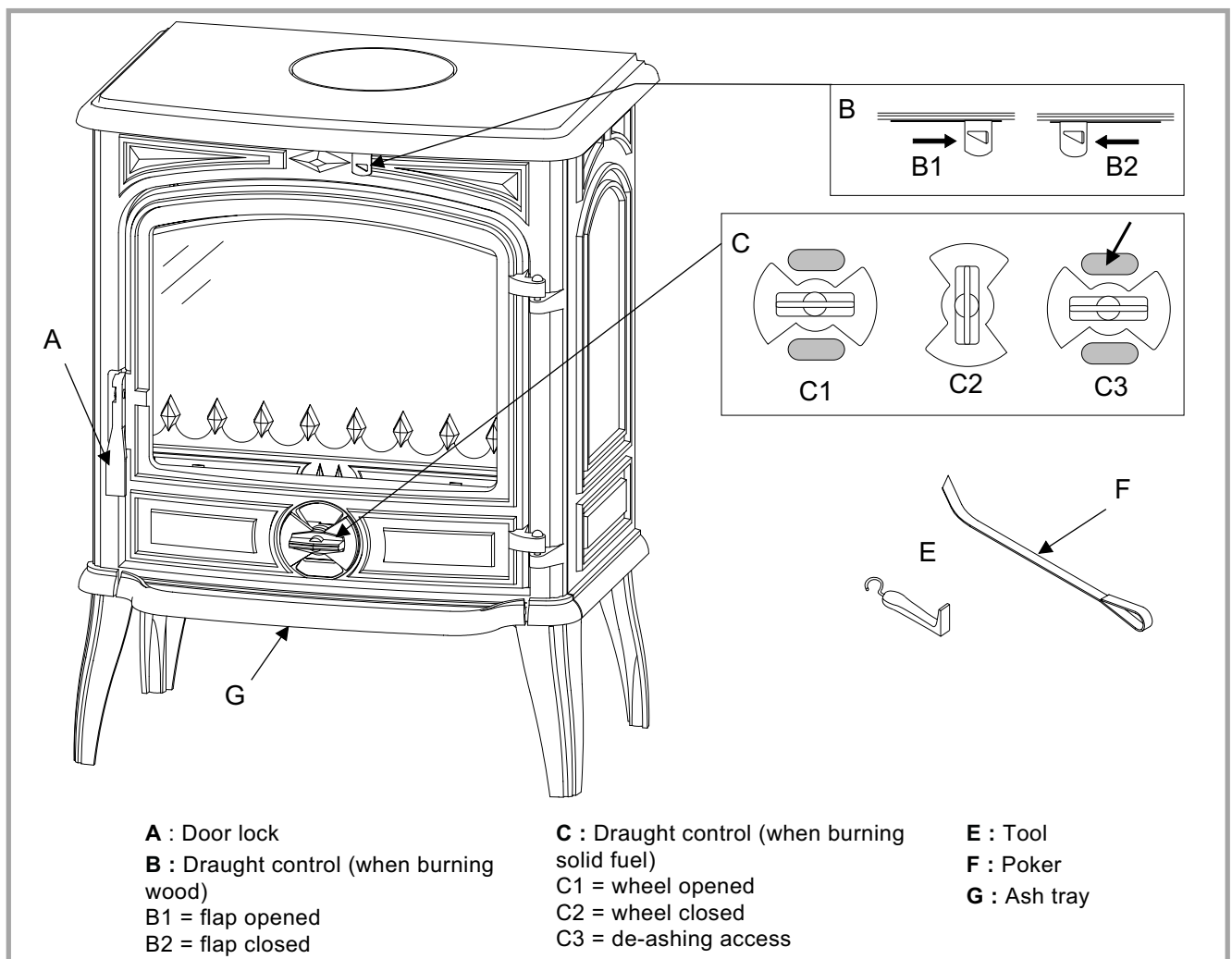


Figure 8 - Operating devices

- The burning rate can now be adjusted by moving the top air control to the left (# B1). Experience will show you which settings are best for your situation.

At the first lighting, the fire must be progressively increased to allow the various parts to expand normally and to dry up.

Note : When the fire is lit for the first time, the stove may give off fumes from the new paint. This is normal but ensure the room is well ventilated during the first few hours of operation.

3.3. Operating procedure

The appliance must function all door and the lighting flap properly closed,.

The burning rate can be adjusted by moving the top air control (# B1). Experience will show you which settings are best for your situation.

3.4. Loading the fuel

It is advisable to wait for the fire to be reduced to hot embers before re-loading.

The door should be opened slowly, avoiding a sudden rush of intake air, so that smoke does not escape into the room.

The logs must be placed on the glowing embers.

For a briskly burning fire, there should always be at least two logs in the grate. The fire will burn better if there are several logs (diameter 10 to 16 cms).

For a slower burning fire (for example, at night), select larger logs.

After loading the firebox, close the main door.

Open the lighting flap for a while.

3.5. De-ashing

It is essential to keep the grate free from a heavy build up of ashes.

REMEMBER TO BURN SOLID FUEL CORRECTLY, AIR SHOULD BE ALLOWED TO FLOW FROM THE ASH PIT AREA THROUGH THE GRATE AND THROUGH THE FUEL. IF THE GRATE OR ASH PAN ARE CONGESTED, THE PERFORMANCE WILL BE EFFECTED.

If burning solid fuel, always empty the ash pan at least once a day or whenever it is full of ashes. Never allow the ashpan to overflow allowing ash to be in contact with the underside of the grate. If this condition is allowed, the grate will wear out pre-maturely.

3.6. Recommendations

This room heater is a high heat producing appliance and may cause severe burns if touched on the glass front door, or on top directly over the burner

KEEP CHILDREN AWAY.

The stove may still be hot even when fire has burnt out.

3.7. Maintenance of the stove body

- The stove must be regularly cleaned.
 - Remove all deposits from the combustion chamber and clean the grate area.
 - The vitro ceramic glass can only be cleaned using a soft cloth and stove glass cleaner, available from your Franco Belge Dealer. **DO NOT USE ABRASIVES**
 - The vitro ceramic glass resists a temperature of 750°C. If the glass should be broken, it is recommended that only an original factory replacement should be fitted.
 - For enamelled finishes, the stove body can be cleaned using a soft cloth either dry, or slightly damp with a very mild detergent.
- NEVER CLEAN ENAMEL SURFACES WHILST THE STOVE IS HOT.**
- The cast iron body panels of non-enamelled stoves can be cleaned with a proprietary stove cleaner or re-sprayed / touched up using a stove paint. These products are available from your Franco Belge Dealer.

3.8. Trouble Shooting



: This sign means that you should ask for a qualified engineer to do the work.

<i>Problem</i>	Probable causes	- Action
<i>Fire difficult to start</i> <i>Fire goes out</i>	Wood green, too damp.	- Use hard wood logs, which have been cut for at least two years and stored, under shelter.
	Logs are too big.	- To light the fire, use small, very dry twigs. To maintain the fire, use split logs.
	Poor quality wood.	- Use hardwood that have a higher calorific value per cu metre (Yoke-elm, oak, ash, maple, birch, elm, beech, etc.)
	Air starvation.	- Open lower spin wheel and top air control lever.
	Insufficient draught.	<input checked="" type="checkbox"/> - Check that the flue is not obstructed, sweep it if necessary - Seek advice from a chimney specialist.
<i>Fire burns too quickly.</i>	Too much draught.	- Ensure that the lower spin wheel is closed - Partially close the top air control lever.
	Excessive draw.	<input checked="" type="checkbox"/> - Install a draught stabiliser. Consult your Dealer.
	Poor quality wood.	- Do not continuously burn small wood, sticks, bundles, carpentry offcuts (plywood, pallets), etc.
<i>Smokes when lighting up.</i>	Flue duct is cold.	- Burn paper and kindling wood to increase heat.
	Room is in decompression.	- In houses equipped with mechanical ventilation, partly open a window until the fire is well established.
<i>Smokes while burning.</i>	Draught is insufficien.	<input checked="" type="checkbox"/> - Consult a chimney specialist. - Check that the flue is not obstructed, sweep if necessary.
	Down draught.	<input checked="" type="checkbox"/> - Install an anti-down draught cowl. Consult your Dealer.
	Room is in decompression.	<input checked="" type="checkbox"/> - In houses equipped with Mechanical Ventilation, an outside air intake must be installed for the chimney.
<i>Low heat output.</i>	Incorrect Fuels.	- Use the recommended fuel.

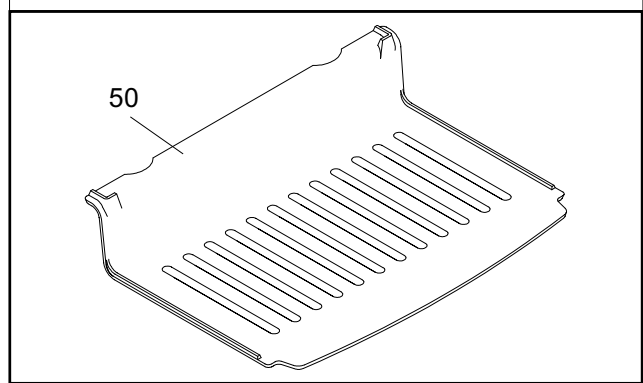
4. Spare parts

When ordering spare parts, specify **the stove type** and **serial number**, including the colour index (on the guarantee or identification plate), the name of the part and the part number.

Example : Wood stove, ref. **134 08 02**, colour **Y**, top plate **352150 EF**.

N°	Code	Description	Type	Qty
1	100917	Cam pin	12x20 M7	01
2	100939	Axle	02
3	110404	Hinge pin	6x30	02
4	134258	Bushing	01
5	181632	Adhesive rope	1,30 m
6	166003	Spring	11x15	01
7	808001	ED Hand tool	01
8	181607	Ceramic rope	Ø 9,5	2,50 m
9	188812	Ceramic glass	379x293	01
10	189103	Screw	27x8x6	01
11	189825	Screw	M 6x5	01
12	205362	Back panel	01
13	222556	Flue baffle	01
14	237411	60 Reducing plate	01
15	259015	Fixing plate	04
16	270408	Air control flap	01
17	300126	EF Leg	02
18	300481	EF Base	01
19	301526	EF Door lock	01
20	301742	EF Air damper	01
21	303718	EF Blanking plate	01
22	303860	EF Flue collar	01
23	305014	Wall	01
24	305212	Wall	01
25	306276	EF Back wall	01
26	307434	EF Fuel retainer	01
27	309228	Grate	01
28	309891	EF Front plate	01
29	310726	EF R. side panel	01
30	310824	EF L. side panel	01
31	315607	Air duct	01
32	325304	Reducing plate	02
33	327903	EF Ash-tray	01
34	331104	EF Main door	01
35	352150	EF Top plate	01
36	406816	Clamp	01
37	624042	Ash-pan	01
38	162541	Descriptive plate	01
39	415504	60 Poker	01
40	181619	Ceramic rope	Ø 12	1,60 m
41	262607	Heatshield	01
42	300127	EF Short leg (optional)	04
43	988867	Complete main door	01
44	142881	Rope	04

50 308711 Coal grate 01



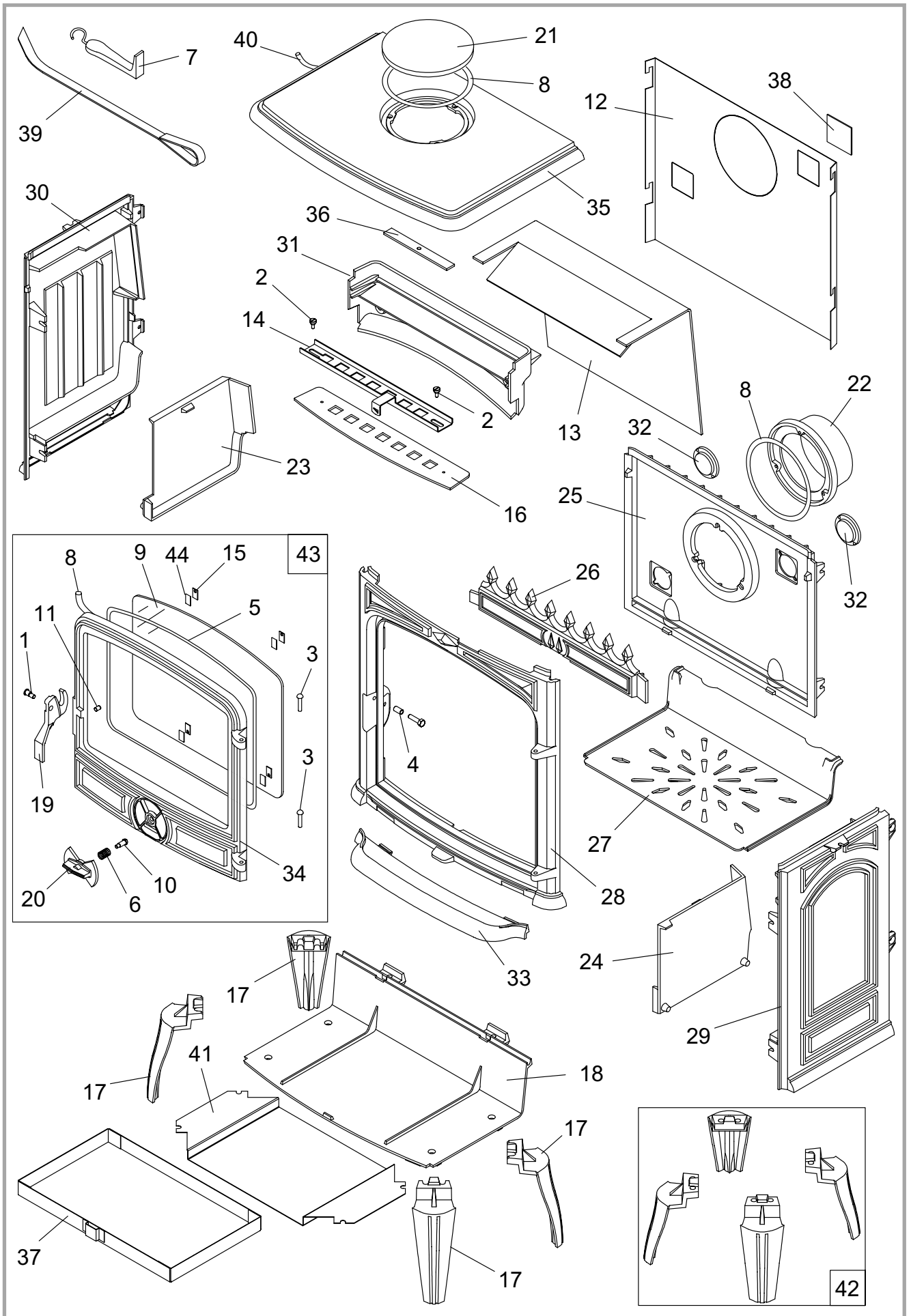


Figure 9 - Stove - exploded view



Guarantee certificate

Legal guarantee

The specifications, dimensions and information shown on our documents are provided for information purposes only and under no circumstances are binding upon the vendor.

With the aim of constantly improving our equipment, all modifications considered as necessary by our departments may be made without notice.

The provisions of the present guarantee certificate are not excluding or limiting the owner of the equipment's rights, concerning the legal guarantee regarding faults or hidden vices which applies in all circumstances, in the conditions detailed in articles 1641 and following of the civil code, and in the country in which the equipment was purchased.

Contractual guarantee

Our equipment is guaranteed against faults and hidden vices subject to the following conditions:

- 1) Installation and adjustment of the device by a professional installer.
- 2) Observance of the instructions provided in our technical documents and our installation/adjustment instructions.
- 3) The installation, use and maintenance of the device carried out in conformity with the applicable standards and legislation, and with the indications provided in the technical instructions accompanying the device.

This guarantee covers the replacement, in our factory, of parts recognised as being defective from the outset by

our "Guarantee Inspection" Department. Carriage and labour is at the user's cost. Moreover, if the repair or replacement of parts covered by the guarantee is found to be too costly vis-à-vis the price of the appliance, the decision to replace or repair the appliance will be taken by the vendor.

Our guarantee is for 2 (two) years for all appliances, with the exception of closed combustion fireplace and inserts for which our guarantee is 5 (five) years excluding the following:

- 1) Indicator lights, fuses, electrical elements and fans.
- 2) Parts subject to wear or in contact with high temperatures namely: soles and burner grills, bottom plates baffles, ash pans, paintwork and surface treatments for decorative parts. Also excluded from this guarantee are seals and windows.
- 3) Any damage which may result from the use of the appliance with a fuel other than that stipulated in our instructions.
- 4) Damage occurring to parts caused by elements outside the appliance (down draught, storm damage, damp, abnormal pressure or vacuum, heat shocks, etc.).
- 5) Damage to electrical parts caused by plugging in and using the appliance on a mains system, the voltage of which (measured at the entrance to the appliance) is 10% above or below the nominal voltage of 220 V.

Exclusion of liability

In the case of a product manufactured at the client's request, under no circumstances may we, as a subcontractor, be considered liable vis-a-vis the client or third parties for defects arising from the installation or a design fault with the item in question.

☒ Name and address of the installer : _____

☎ Telephone : _____

☒ Name and address of the customer : _____

Date of installation : ____ / ____ / ____

Model of the appliance : 134 08 02

Color : Y

Serial number : _____

• This certificate has to be completed and kept carefully.

In case of claims, send a copy of this to :

STAUB FONDERIE
BP 73, 59660 MERVILLE, FRANCE.