

Product Bulletin/Edition	PB153/Ed2
Department/Product/Fuel	Franco Belge/MONACO/MF
Date Month/Year	September/2016

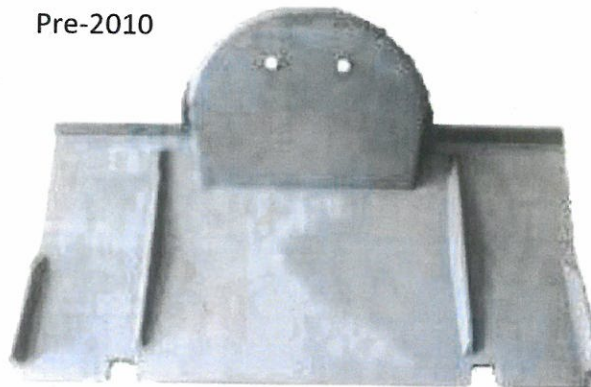
Monaco Baffle Identification and Fitting

The Monaco stove pre-2010

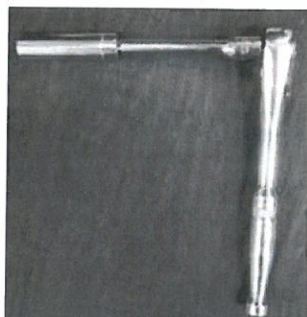
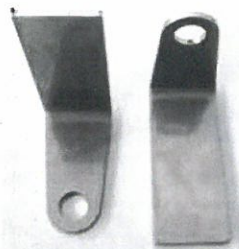
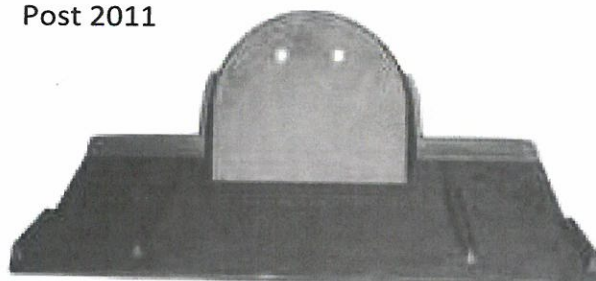
The baffle supplied for the Monaco stoves built prior to the end of 2010 had cut outs on the front edge and was slightly wider. The part number for this was 323209 and it is no longer available.

If your stove is older than this then when fitting the new baffle FB323209 you will need to install 2 support brackets FB238003 to the air wash housing to keep the front edge in place as the baffle is slightly narrower from front to back.

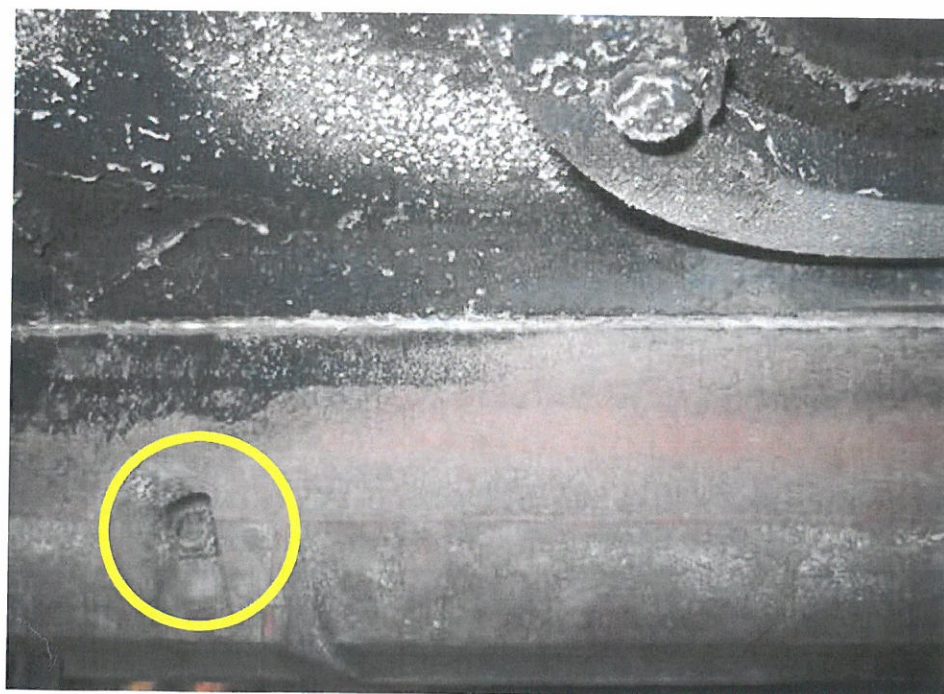
Pre-2010



Post 2011



You will require a 10mm socket and ratchet with a small extension bar to undo the air wash housing bolts to fit the brackets. These bolts are found on the inside of the stove left and right of the top of the opening of the main body when the door is open. Soaking with WD40 or a similar penetrating oil will help with the removal of the bolts.



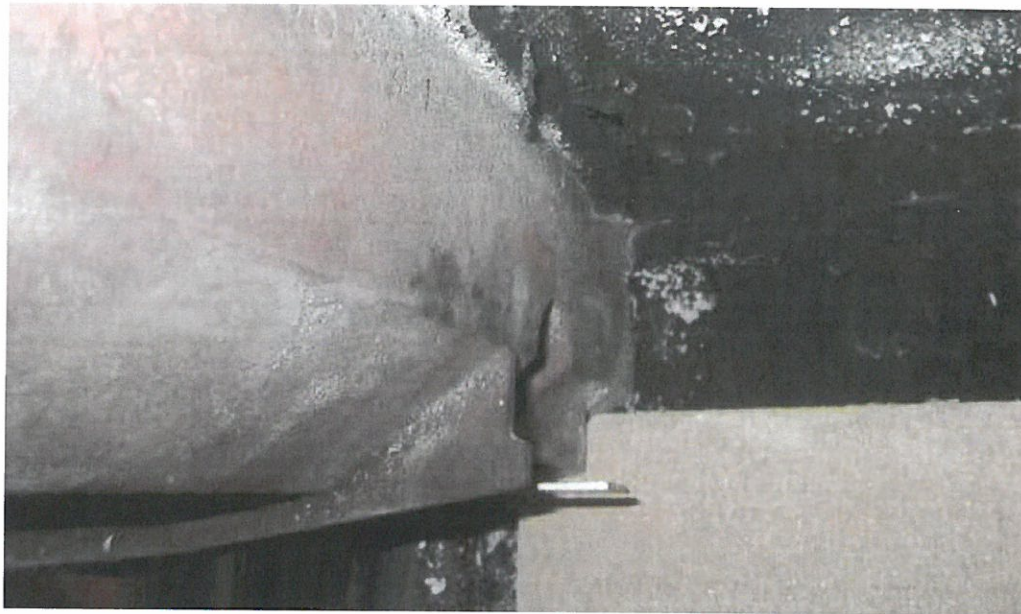
This picture was taken looking towards the door opening.

Product Bulletin/Edition	PB153/Ed2
Department/Product/Fuel	Franco Belge/MONACO/MF
Date Month/Year	September/2016

Monaco Baffle Identification and Fitting

Bracket fitting continued:

The bracket can be seen, in the picture below, increasing the support length of that of the one on the cast iron air wash. This is not required on stoves produced after the end of 2010.



Baffle Supplementary support part No: FB326605

The small cast iron supplementary support can sometimes be removed from the old baffle and reused however in many cases it may have become distorted and will need to be replaced. It requires 2 x 30mm M6 bolts and nuts to fit it to the new baffle, these can be purchased from any DIY store.



It is very important that the baffle is fitted correctly at the back of the stove as well as it resting on the steel brackets or cast iron lugs at the front.

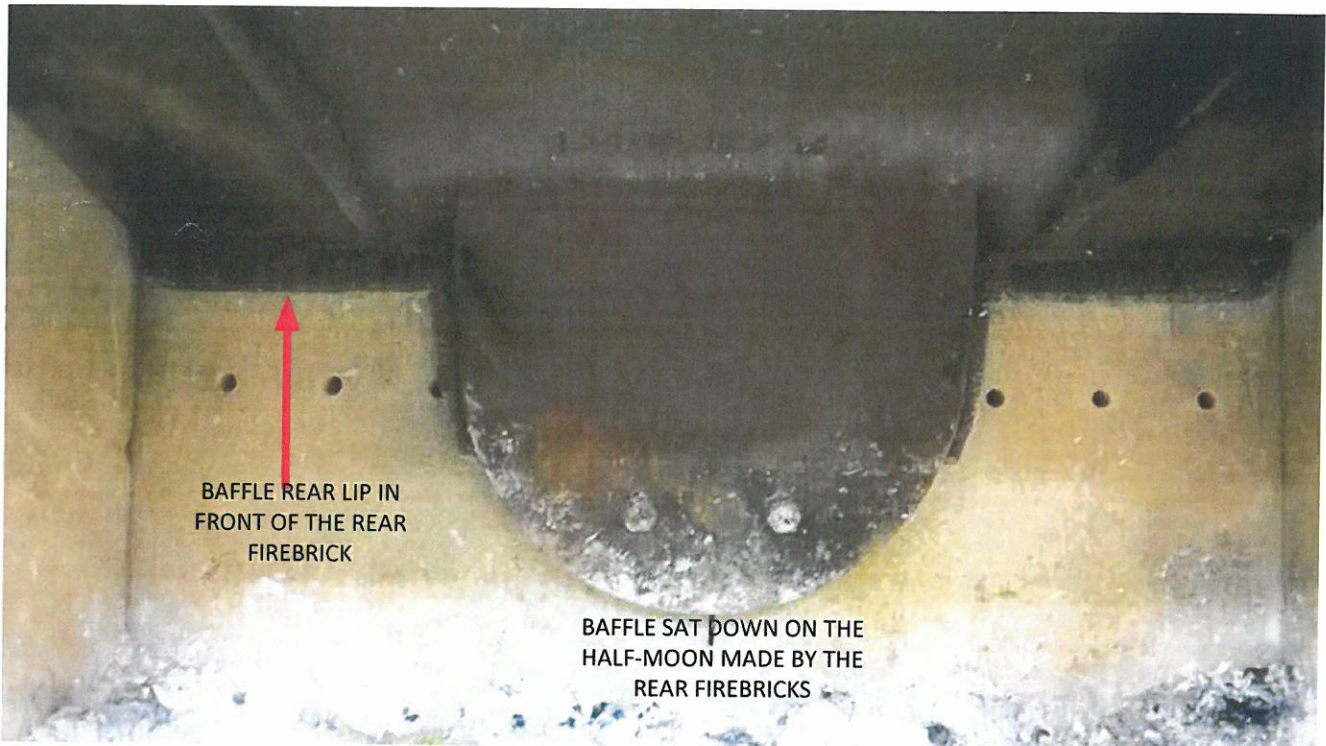
We always recommend that your stove is serviced and maintained by a qualified and competent heating engineer.

Product Bulletin/Edition	PB153/Ed2
Department/Product/Fuel	Franco Belge/MONACO/MF
Date Month/Year	September/2016

Monaco Baffle Identification and Fitting

The baffle in the Monaco stove can be fitted incorrectly which causes it to drop out and can also lead to the bottom support burning away and damage to the rear cast panel of the stove.

Correctly the front sits on the two lugs at the front, above and just within the opening. The rear support sits down on the half-moon in the two rear fire bricks. This will then have the rear of the baffle in front of the two rear fire bricks at the top.



The picture to the right shows the baffle incorrectly fitted. The rear of the baffle has been sat on top of the two rear firebricks. This means that it sits further back in the stove and does not sit on top of the two front lugs properly, causing it to be easily dislodged.

It exposes the rear cast iron panel of the stove directly to the fire and also allows hot flue gasses to pass up behind the bottom of the baffle.

This will lead to the baffle becoming damaged.

