

Glow-plug ignitor



ALL / EURO - ALL / US CA - ALL / GB

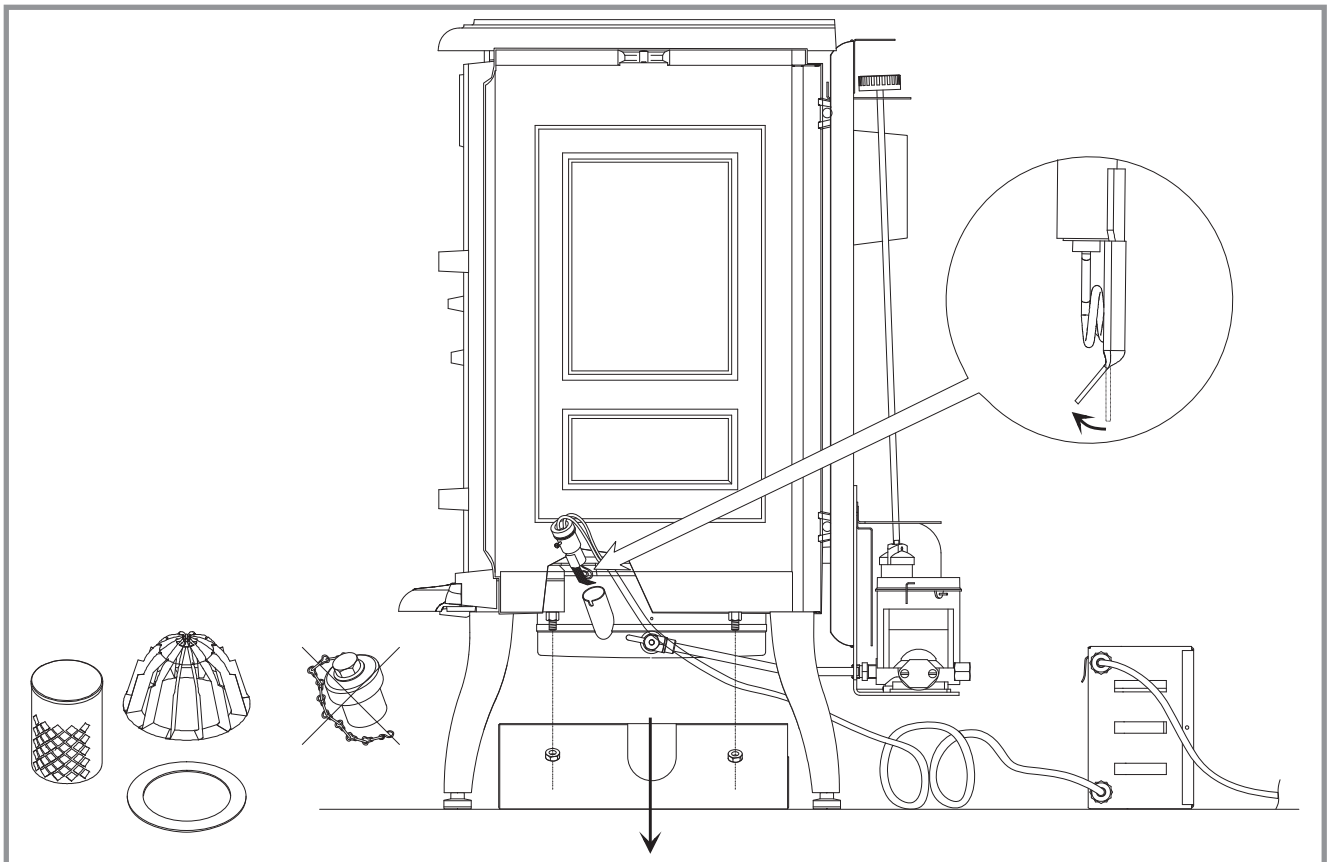


Figure 1

1. Specifications

USA / CANADA

Voltage (60 Hz) V 115

Electrical power required
for lighting. W 94

GB

Voltage (50 Hz) V 230

Electrical power required
for lighting. W 94

2. Fitting the kit

Figure 1

- Remove the burner heat shield (if existing).
- Remove the plug and discard.
- Remove the catalyser.
- **Fold the small tongue of the igniter** and insert the igniter element assembly into the igniter sleeve located on the side of the burner pot, **ensuring there is a good seal (see rep. 18, fig. 4).**

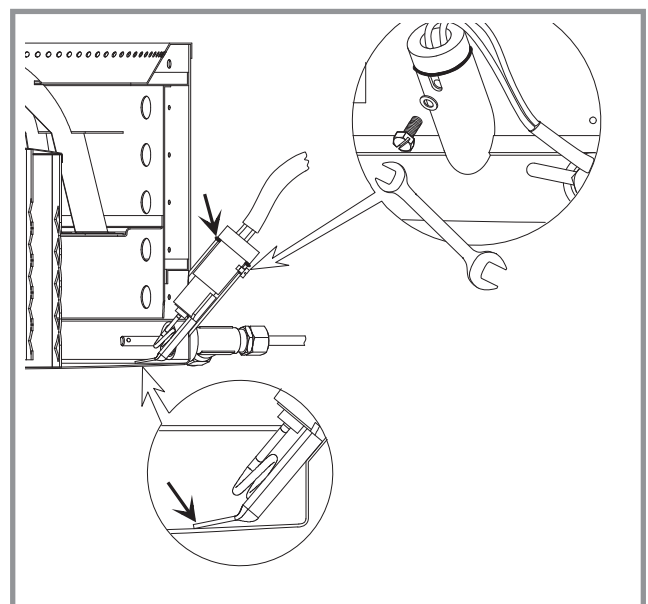


Figure 2

Figure 2

- Secure into position by tightening the washer (rep. 16, fig. 4) and the set screw (rep. 17, fig. 4). **Be sure the small tongue of the igniter touch the burner pot bottom.**

Figure 3

- Guide the igniter wire into the slot on the side of the burner heat shield (if existing) while repositioning the heat shield. Refasten using the butterfly nuts.

Figure 4

- Fit the transformer onto the back heat shield by sliding it into the two guides on the left backside or fixed the support (rep. 14, fig. 7, p. 4) on a wall.

- Connect the electrical feeding cable on the supply circuit.

For GB : The plug of the electrical feeding cable is supplied with a 13 A fuse.

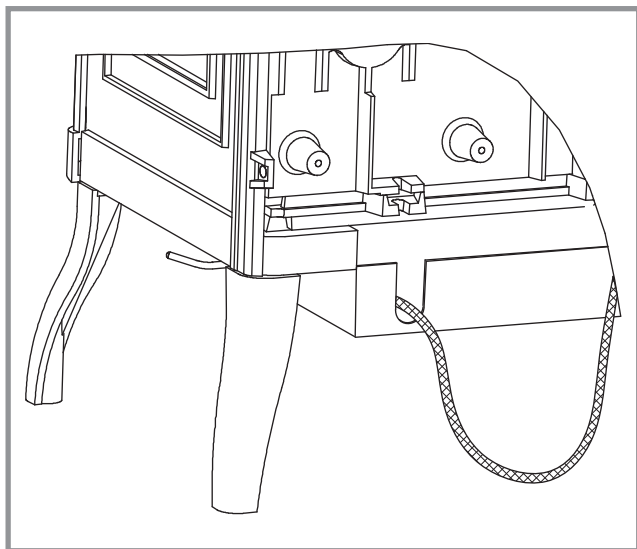


Figure 3

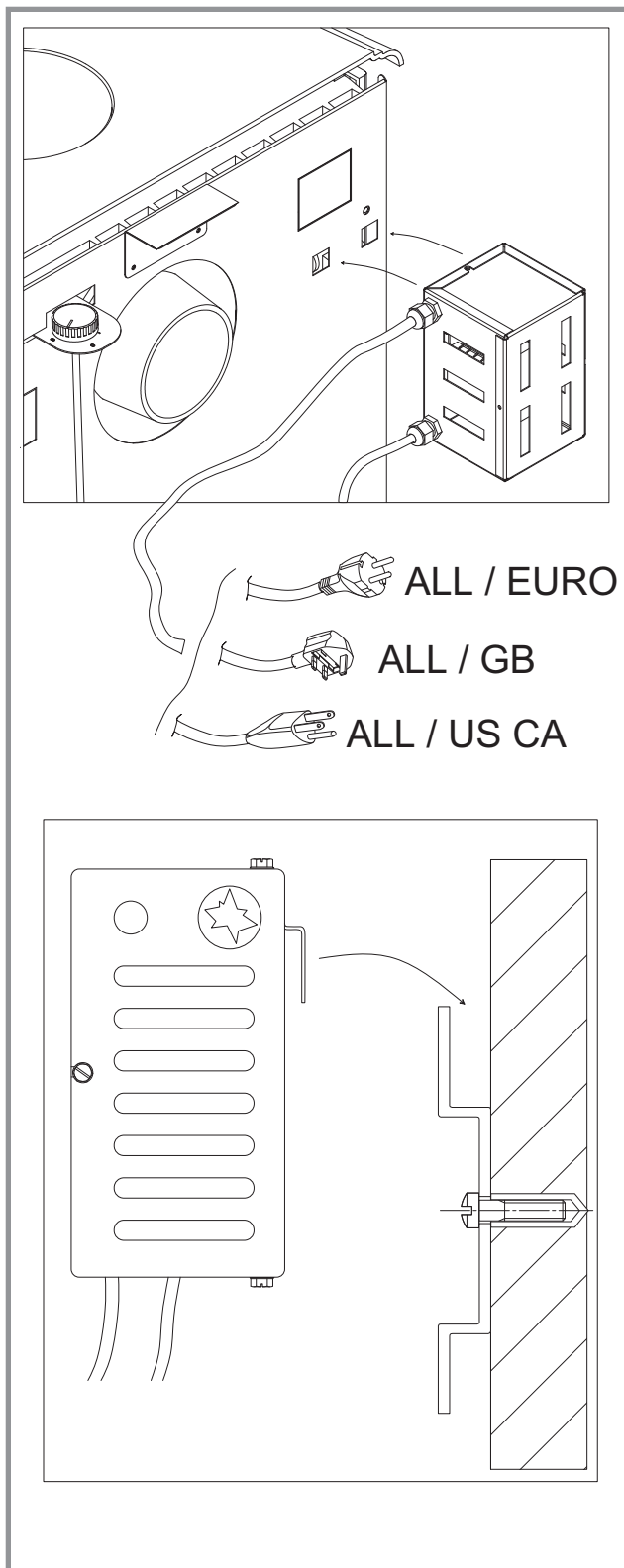


Figure 4

3. Electrical connection

Realize the electrical feeding with the cable 3 electrical conductives.
 - Tension **USA/CANADA** : 115 V (60 Hz).

- Tension **GB** : 230 V (50 Hz).
 Ground protected by a fuse 1 A

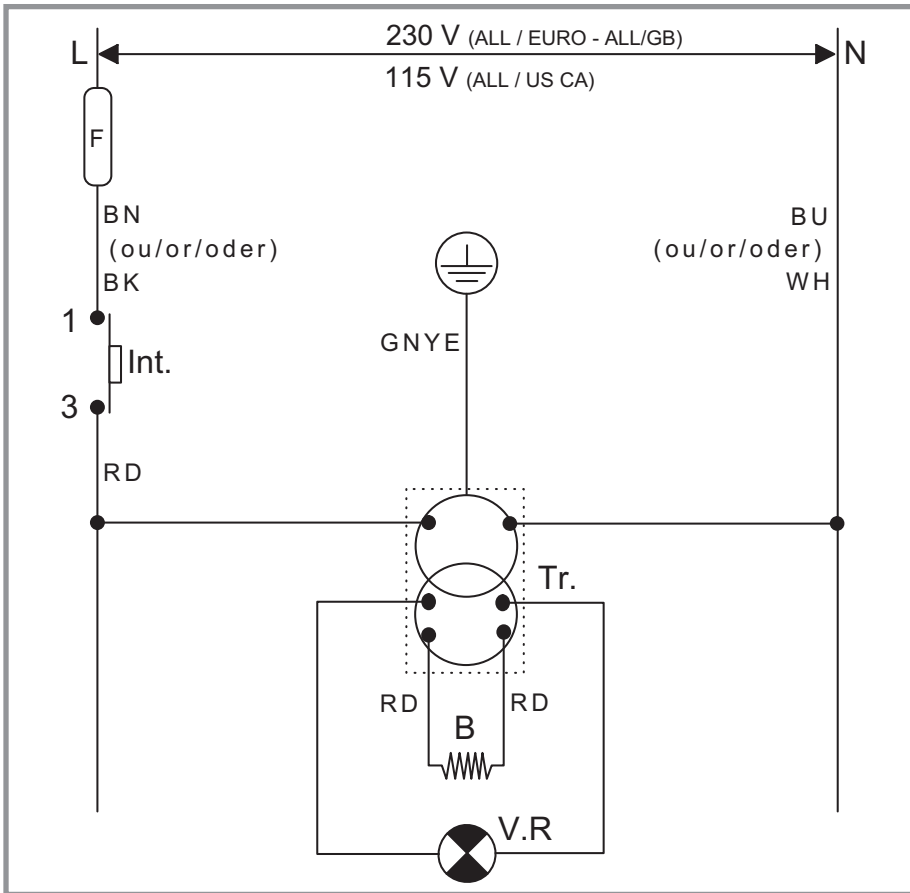


Figure 5 - Electrical wiring

- B** : Igniter
- BN** : Brown (ALL / EURO)
- BK** : Black (ALL / US CA)
- BU** : Blue (ALL / EURO)
- GNYE** : Green / yellow
- Int.** : Switch
- L** : Phase
- N** : Neutral
- RD** : Red
- Tr.** : Transformer
- V.R** : Red signal
- WH** : White (ALL / US CA)
- F** : Fuse (ALL / GB)

4. Lighting procedure with igniter

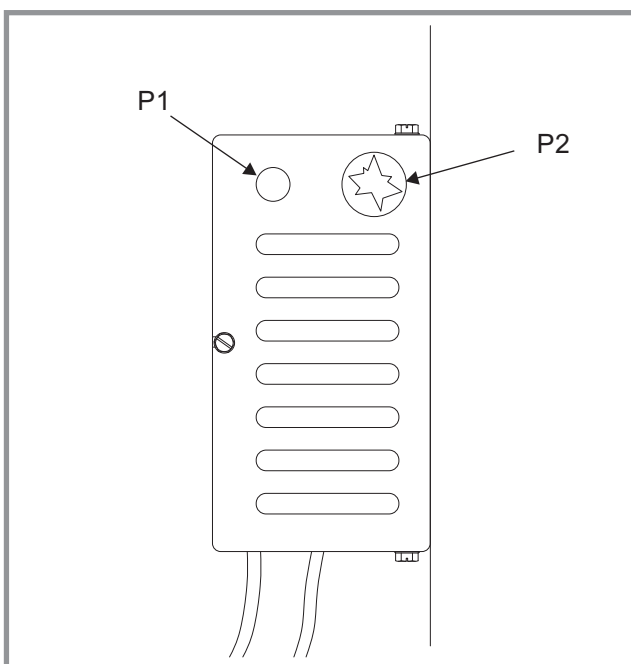


Figure 6

Consult instructions' stove.

Carry out checks before starting. Make sure burner is clean and not drowned.

- 1 - Open the feeding top combustible.
- 2 - Make sure of lever is set at "0" (# 1).
- 3 - Pull down the lever arming regulator (# 3), it permits the combustible's entrance in the regulator.
- 4 - Turn the setting lever until 2 or 3.
- 5 - Push the button (# P2, fig. 6) until the flame appears.
 Nota : the light (# P1, fig. 6) stays on as much as the igniter is on.
- 6 - Once the flame comes, reduce the setting lever on position 1 or 2.

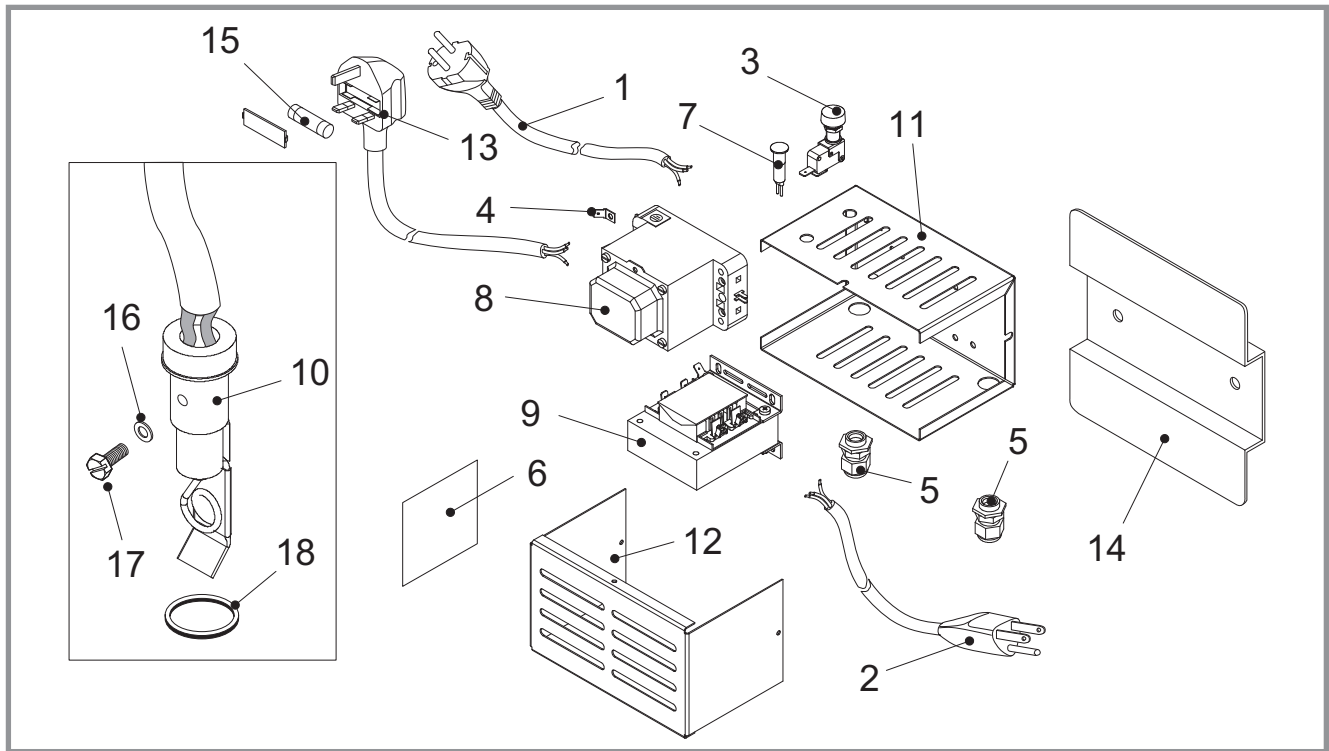


Figure 7

5. Spare parts

For any order of spare parts, please indicate : **model number**, description of the part, code number and colour index of the part.

Example : Automatic ignition kit, ALL / EURO, cover 252667 10.

A = ALL / EURO **B** = ALL / US CA **C** = ALL / GB

N°	Code	Description	Type	A	B	C	Qty
1	109268	Cable with EURO plug	3x0,75 mm2	A			01
2	109264	Cable with US/CAN plug			B		01
3	139245	Switch		A	B	C	01
4	146203	Small tongue		A		C	01
5	161016	Stuffing box		A	B	C	02
6	162555	Descriptive plate			B		01
6	162556	Descriptive plate		A			01
6	162574	Descriptive plate				C	01
7	191026	Signal	6 V	A	B	C	01
8	198624	Transformer	230 V	A		C	01
9	198625	Transformer	115 V		B		01
10	902500	Sparking plug		A	B	C	01
11	239207 10	Support		A	B	C	01
12	252667 10	Cover		A	B	C	01
13	109265	Cable with GB plug				C	01
14	202808	Support		A	B	C	01
15	-	Fuse	13 A			C	01
16	167408	Washer		A	B	C	01
17	189783	Screw		A	B	C	01
18	142882	Seal	d. 23	A	B	C	01

STAUB FONDERIE

SARL with the capital of 10 000 000

Head Office Address
Administration and manufacturing
Rue Orphée Variscotte
BP 73
59660 MERVILLE (FRANCE)

Telephone : 00 333 28 43 43 00
Fax : 00 333 28 43 43 99

R.C.S. DUNKERQUE
SIREN 444 821 953

Subject to modifications.

