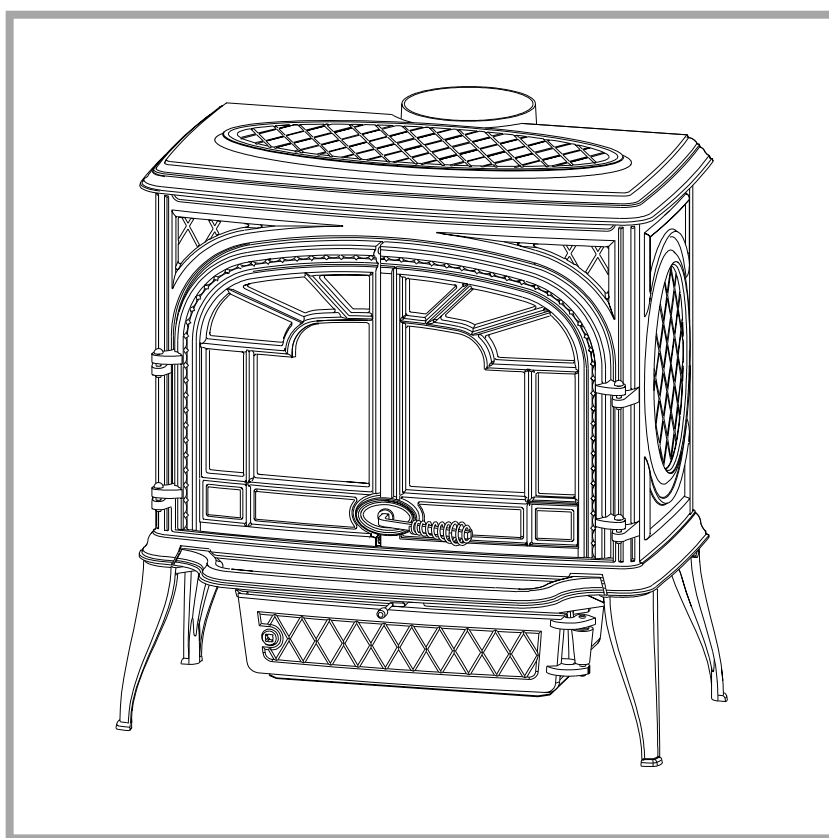

ARDENNES

Wood stove

NF EN 13240

Model : 134 13 15

Output : 11 kW



Description of the appliance

Installation instructions

Operating instructions

Spare parts

Warranty certificate

Document n° 1146-10 ~ 15/05/2006

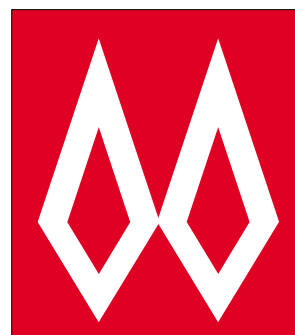


Technical manual

to be saved

by the user

for future reference



FRANCO BELGE

STAUB FONDERIE

SARL with the capital of 6 359 540 €
Head Office Address
2, rue Saint Gilles
68230 TURCKHEIM
RCS Colmar
SIREN 444 881 953

Address
Administration and manufacturing
BP 73
59660 MERVILLE (FRANCE)
Telephone : 00 333 28 43 43 00
Fax : 00 333 28 43 43 99

Subject to modifications.

FRANCO BELGE congratulates you on your choice.
FRANCO BELGE guarantees the quality of its appliances and is committed to meet its customers' needs.
FRANCO BELGE, which can boast a 80-year experience in the industry of heating devices, uses state-of-the-art technologies to design and manufacture its whole range of products.
This document contains instructions on how to install your appliance and make full use of its functions, both for your comfort and safety.

CONTENTS

Description of the unit	p. 3
Package	p. 3
Specifications	p. 3
Appliance description	p. 3
Operating principle.	p. 3
Installation instructions	p. 4
Warning to the user	p. 4
Location of the unit	p. 4
Chimney	p. 4
Mounting the flue collar	p. 5
Chimney connector	p. 5
Mounting the tray	p. 5
Pre-utilisation check	p. 5
Maintenance of the Chimney	p. 5
Instructions for user	p. 6
Fuel	p. 6
Lighting	p. 6
Operating procedure.	p. 7
De-ashing	p. 7
Maintenance of the Chimney	p. 7
Maintenance of the stove	p. 7
Safety advice.	p. 7
Trouble shooting	p. 8
Spare parts	p. 9

This appliance is meant to burn wood safely

WARNING

Incorrectly installed, this appliance can be dangerous and possibly cause serious accidents. We recommend that you engage the services of a professional engineer for its installation and the regular maintenance requirements.

1 Description of the unit

1.1 Package

- 1 package : Stove

1.2 Specifications

Model	134 13 15
Hearth dimensions (combustion chamber)	
- Width mm	520
- Depth mm	304
- Height mm	265
Logs dimensions	
- Depth cm	50
- Diameter cm	10 à 16
Ash pan capacity litre	5
Weight kg	140
Heated volume m ³	480
Smoke exit at rear	
- Chimney draft required Pa	13
- Nominal Heat Output kW	11,04
- Smoke temperature C°	357
- Specific smoke flow g/s	13,85
- Efficiency	67,75
- Co (13% O ₂)	0,158
Smoke exit on the top	
- Chimney draft required Pa	12
- Nominal Heat Output kW	11,32
- Smoke temperature C°	386
- Specific smoke flow g/s	13,96
- Efficiency	65,8
- Co (13% O ₂)	0,165

Note : The indicated performances result from tests carried out in accordance with standard NF EN 13240 with logs of Ø 12 of 40 cm and a draught of 12 Pa with top outlet and 13 Pa with rear outlet.

1.3 Appliance description

Wood stove - in conformity with NF EN 13240

- Continuous-burning heating appliance.
- Detachable flue spigot for rear or top chimney connection.
- Front loading door fitted with large refractory glass panel.
- Adjustable air control for controlling the burning rate.
- Large ash-pan.

1.4 Operating principle

The “ARDENNES” is designed for operating only with the door closed. Heat is mainly diffused by radiation, through the window and body of the appliance.

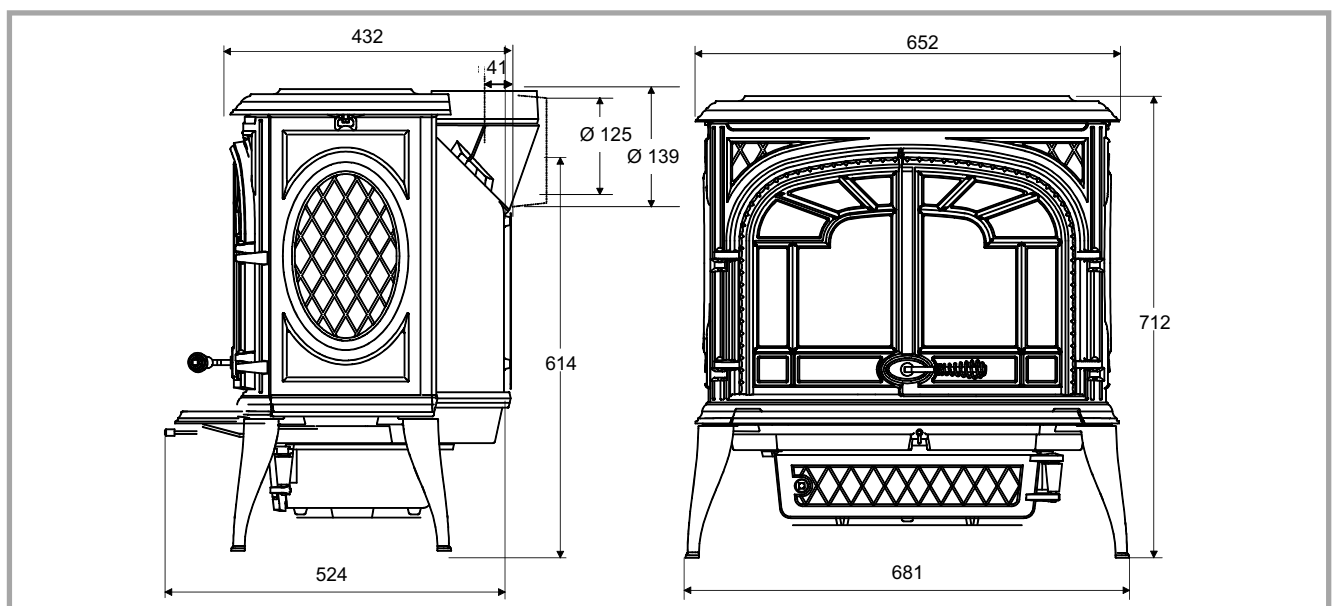


Figure 1 - Dimensions in mm

2 Installation instructions

2.1 Warning to the user

All the local and national regulations, and in particular those relating to national and European standards, must be observed when installing the appliance.

An incorrectly installed heating appliance can cause serious accidents (chimney fires, burning of plastic insulation materials, in partition walls, etc.).

The insulation of both the appliance and the exhaust gas pipe has to be reinforced and done according to the Standards and the Building Regulations for safety reasons. The installation must be carried out according to the Standards and the Building Regulations.

Failure to respect the mounting instructions leads to engage the responsibility of the one doing the installation.

The manufacturer’s responsibility shall be limited to the supply of the appliance.

2.2 Location of the unit

Ventilation : For satisfactory appliance operation with a **natural draught**, check that sufficient air for combustion is available in the room. In houses equipped with one VMC (controlled mechanical ventilation), this one aspire and renew the ambient air; in this case, the residence is under slight low pressure and a **non-sealable** external air intake must be installed in addition to the chimney itself, at least 50cm² in section.

Position of the unit : For new installations, select a central position within the house, to provide a good heat distribution around the building. The heat distribution towards the other rooms will be made through the communicating doors. These rooms must be at low pressure or fitted with **non-adjustable air registers**, placed so that they cannot be obstructed, to encourage circulation of the hot air.

Floor and walls : Make sure there are not combustible or covered with combustible material. Otherwise it must necessary to install a non-combustible protection. There must be a clearance of at least 150 mm at each side of the appliance and at the back of the appliance from a non-combustible wall. This distance must be extended to a minimum clearance of 400 mm from any combustible materials.

This measurement may be reduced to a minimum gap of 50 mm when the non-combustible wall is at least 200 mm thick.

There should ideally be a minimum gap of 300 mm

at the right hand side of the stove, this will ensure the best possible access to the loading door. When using a single wall flue pipe, there must be a clearance (A) of at least three times its diameter (B) from any combustible materials. If the appliance has to be located in an opening, this distance must be extended to a minimum clearance (A) of 450 mm from the pipe or the stove body to any combustible materials.

Hearth :

The appliance must stand on a fireproof hearth.

It is possible to provide a hearth made of non combustible board/sheet material or tiles at least 12 mm thick (C).

Constructional hearths should be constructed of solid non combustible material at least 125 mm thick (including the thickness of any non combustible floor under the hearth).

The hearth must protrude at least 300 mm in front of the stove and 150 mm each side.

If the hearth is constructed on timber, there must be a clearance of at least 250 mm from the timber to the top surface of the hearth. (See section J of the Building Regulations).

When using a single wall flue pipe, there must be a clearance (A) of at least 450 mm from any combustible materials (timber mantel, girder).

2.3 Chimney

The chimney must comply with Current Building Regulations. If in doubt, consult your Dealer or local Building Inspector.

Existing flue :

- The flue must be in good condition and must provide sufficient draught (refer to technical details p. 3).
- The flue must be suitable for the installation of fuel burning appliances, otherwise it must necessary to install a tubing.
- The flue must be **clean**. It should be swept to remove soot and dislodge tar deposits.

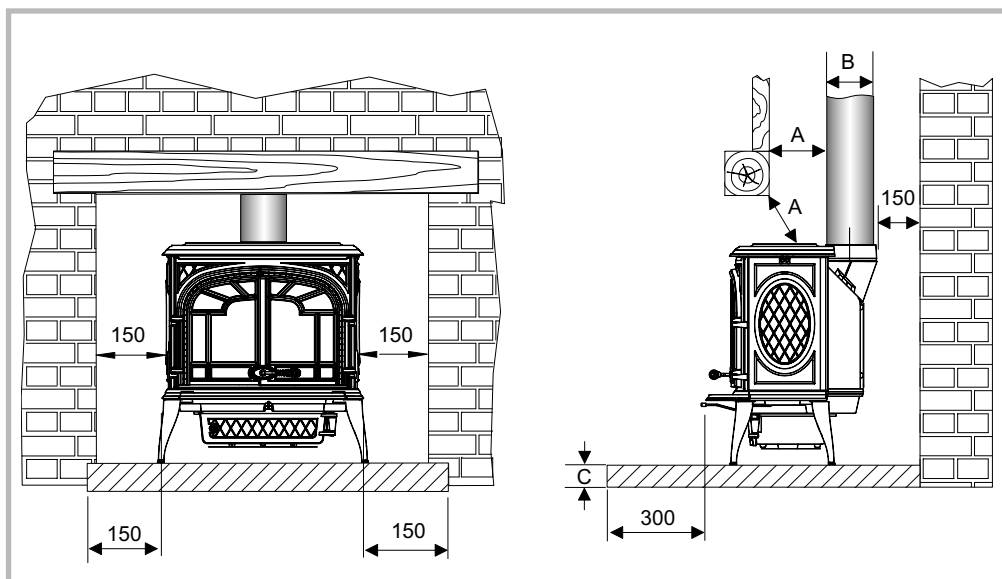


Figure 2 - Minimum clearances

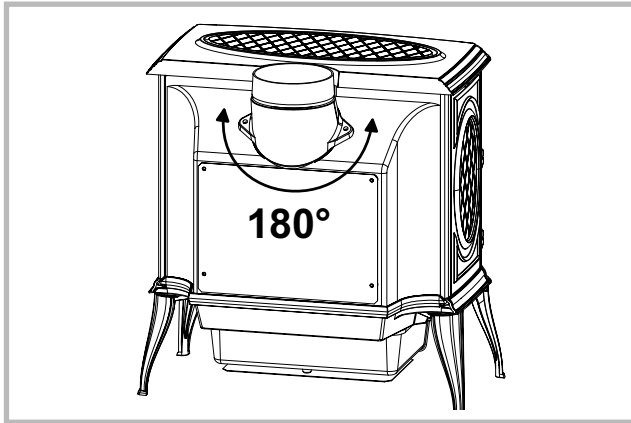


Figure 3 - Mounting the flue collar

- The flue must be well insulated. If the flue inner wall surfaces are cold, a good thermal draw is impossible causing condensation problems (tar formation etc) to occur.
- The flue must be watertight.
- The flue must not be shared with other appliances.
- The chimney must have a constant cross section.
- When the cross-section of the chimney is too large, it has difficulties in obtaining a good draught.
- The chimney must be at least 4.5 m (15 ft) high and be at 40 cm above the ridge of the roof and 8 meters away from any construction.
- In case of a flat roof or when the roof gradient is lower than 15°, the stack must be 1,2 m (4 feet) high at least.
- The capping must not restrain the draught.
- If the chimney has any down draught tendency, due to its position in relation to nearby obstacles, then an anti-down draught cowl must be installed on the chimney or the chimney height must be increased.
- If the chimney draught is excessive or irregular, a draught stabilizer (barometric damper) must be installed to the connector pipe it must be **visible and accessible**.

Flue non-existent :

- The appliance must not support the weight of the flue.
- It must be distant from any combustible material (walls, cross members)
- It must permit an easy sweeping.

2.4 Mounting the flue collar

The stove is supplied with a connection flue spigot with an inner diameter of 125 mm and an outer diameter of 139 mm.

Figure 3

The same smoke outlet can be used to install a top or rear flue. All you have to do is remove the 2 screws and turn the adapter 180 degrees.

Ensure that the seal is fitted correctly.

2.5 Chimney connector

- The connection to flue must be carried out according to local building regulations.
- The appliance must be installed as close as possible to the chimney.

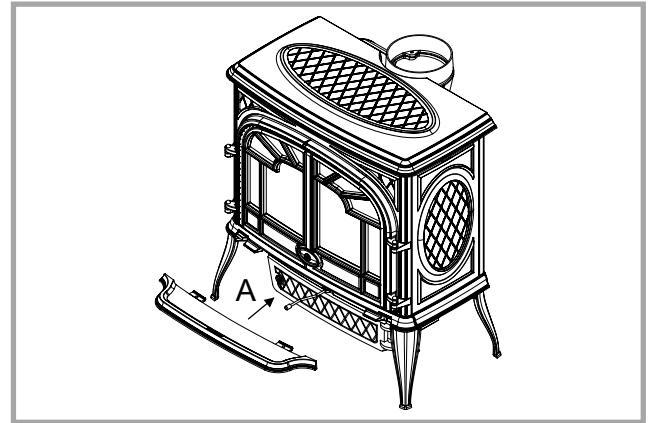


Figure 4 - Mounting the tray

- The connector pipe must be approved for installation with combustion products (either 24 ga. Black painted or blued steel or 316 grade 20 ga. Stainless steel or 1 mm vitreous enamelled steel).
- Pipe diameter must not be less than the appliance spigot diameter. If there is no other solution, the reduction can not be more than one diameter lower than the flue spigot and be situated as distant as possible from the flue connection of the appliance.
- The connection can be either vertical or horizontal. For horizontal connections, avoid right angle bends.
- The join between the connection pipe and the stovepipe, and the flue, must be leak tight.
- For the premises equipped with a mechanical controlled ventilation, the airtightness has to prevent the exhauster drawing out the smokes from the exhaust gas pipe.

The connection pipe and any draught stabiliser must have access for cleaning.

2.6 Mounting the tray

Figure 4

To avoid damage during transport, the tray has been stored behind the main door.

Centre the tray on tab “A” and lower into place.

2.7 Pre-utilisation check

- Check that the seals of the smoke-line are in good condition. Check that the door closes correctly. Check that the glass is not damaged. Check that the smoke passages are not obstructed by packaging or removable parts. Check that all removable parts are correctly installed.

Note : if it acts of a ceramics braid, it is consumable and thus brought to be changed by the user.

2.8 Maintenance of the Chimney

Very important ! In order to avoid any incident (chimney fire, etc...), maintenance tasks must be carried out regularly.

If the appliance is regularly used, **the chimney should be swept several times per year, together with the stovepipe connection section.**

Chimney condition should be checked at least once per year by a professional engineer.

3 Instructions for user

The manufacturer will not be responsible for damages on parts of the appliance due to the use of prohibited fuel or due to an alteration of the appliance or its installation. **Only use replacement parts supplied by the manufacturer.**

All the local and national regulations, and in particular those relating to national and European standards, must be observed when using the appliance.

Don't run the stove in mild weather with coal ! Under certain circumstances (e.g. fog and repeated thaw) the chimney will not draw sufficiently well and thus be at the origin of asphyxia.

3.1 Fuel

This appliance is not an incinerator.

Use hard wood logs, which have been cut for at least two years and stored, under a ventilated shelter.

Use hardwood that have a higher calorific value per cu metre (Yoke-elm, oak, ash, maple, birch, elm, beech, etc.). Large logs must be split and cut to an useful length (50 cm), before being stored in a sheltered and ventilated place.

• **Recommended fuel**

Firewood : **Hornbeam**

• **Suitable fuel**

Firewood : Oak, ash, maple, birch, elm, beech, etc.

• **Prohibited fuel**

Any form of coal and flued oil !

“Green wood”. Green or damp wood reduces the appliance efficiency and soils the glass, the internal walls and the flue (soot, tar, etc.).

“Recovered wood”. Railway sleepers, telegraph poles, offcuts of plywood or chip board, pallets, etc. Burning treated wood quickly clogs the flue ways (soot, tar, etc...), pollutes the environment (pollution and smell, etc.) and cause the fire to burn too quickly and overheat.

☞ **Green wood and recovered wood can cause a chimney fire.**

3.2 Lighting

Figure 5

- Open the air regulation flap (rep. B1)
- Open the main doors.
- Place on the grate on scrunched up paper, some brushwood and some hardwood of small diameter,
- Set light to the paper and close the glass doors.
- When the wood is well lit partially, load the appliance without excess and close the main doors (rep. A).

At the first lighting, the fire must be progressively increased to allow the various parts to expand normally and to dry up.

When the fire is lit for the first time, the appliance may give off fumes from the new paint. This is normal but ensure the room is well ventilated during the first few hours operation.

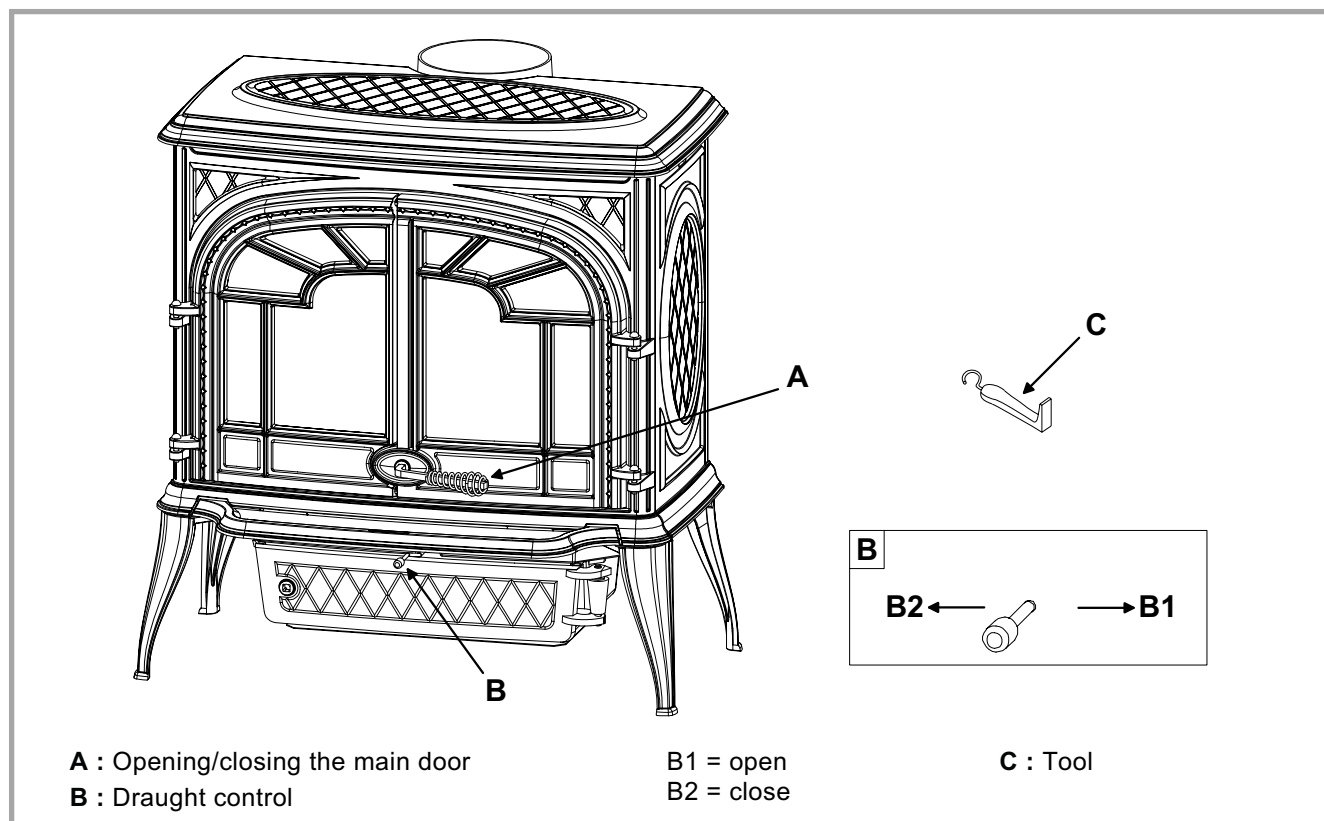


Figure 5 - Operating devices

3.3 Operating procedure

The appliance must function all door properly closed. The burning rate can be adjusted by the air control flap (rep. B).

Experience will show you which settings are best for your situation.

The airwash system works with the top airslide. When the top airslide is full open the system works at its strongest efficiency.

The more closed down the airslide is, the less effective the airwash will be (when shut down completely, the airwash system can not function)

• Loading the fuel :

- The door should be opened slowly, avoiding a sudden rush of intake air, so that smoke does not escape into the room.
- The minimum reloading interval for nominal heat output is 1.5 hours.
- The maximum loading height is approximately 2 12cm-diameter logs
- The logs must be placed on the glowing embers.
- For a briskly burning fire, there should always be at least two logs in the fire. The fire will burn better if there are several logs (diameter 10 to 16 cms).
- For a slower burning fire (for example, at night), select larger logs.
- After loading the firebox, close the main doors (rep. A, page 6).

3.4 De-ashing

- Ashes must be removed regularly.
- Ashes must never be allowed to pile up to the grate. The grate would not be cool down and could rapidly be damaged.
- Empty the ashes when the appliance is cold.
- Pick up the ash pan using a tool.
- Empty the ashes carefully with regard to the live embers.

3.5 Maintenance of the Chimney

Very important ! In order to avoid any incident (chimney fire, etc...), maintenance tasks must be carried out regularly.

If the appliance is regularly used, **the chimney should be swept several times per year, together with the stovepipe connection section.**

If the chimney catches fire, you must cut off the flue draught, close the doors and windows, hatches and keys, remove the embers from the stove, stop up

the connection hole with wet cloths and call the Fire Brigade,

Chimney condition should be checked at least once per year by a professional engineer.

3.6 Maintenance of the stove

- The appliance must be cleaned regularly , together with the connecting pipe and the flue pipe.
- Open the door and remove all deposits in the firebox and clean the removable fire grate.
- Cleaning of the glass door can be done with a soft cloth dampened with water and vinegar or potassium ; this must be done when the appliance is cold ; then rinse with clear water. Do not use abrasive cleaners.
- The “vitroceramic” glass will resists to temperatures of up to 750 C. Should the glass break due to misuse, it must be replaced by the manufacturers own product.
- Check that there are no obstructions before relighting after a long period of disuse.
- The appliance must not be used with a flue serving several appliances.
- To maintain the grates ventilation free of any obstruction,

For enamelled finishes, the stove body can be cleaned using a soft cloth either dry, or slightly damp with a very mild detergent.

NEVER CLEAN ENAMEL SURFACES WHILST THE STOVE IS HOT.

The cast iron body panels of non-enamelled stoves can be cleaned with a proprietary stove cleaner or re-sprayed / touched up using a stove paint. These products are available from your Franco Belge Dealer.

3.7 Safety advice

This appliance produces heat and may cause severe burns if touched.

The stove may still be HOT even when the fire has burnt out.

KEEP CHILDREN AWAY.

3.8 Trouble shooting



: This sign means that you should ask for a qualified engineer to do the work.

Situation	Probable causes		Corrective action
<i>Fire difficult to start. Fire goes out.</i>	Wood green... or too damp		- Use hard wood logs, which have been cut for at least two years and stored, under a ventilated shelter.
	Logs are too big.		- To light the fire, use small, very dry twigs. To maintain the fire, use split logs.
	Poor quality wood.		- Use hardwood that have a higher calorific value per cu metre (Yoke-elm, oak, ash, maple, birch, elm, beech, etc.)
	Not enough primary air		- Open air control. - Open the outside fresh air inlet grid.
	Insufficient draught.	<input checked="" type="checkbox"/>	- Check that the flue is not obstructed, sweep it if necessary. - Seek advice from a chimney specialist.
<i>Fire burns too quickly.</i>	Too much draught.		- Ensure that the lighting flap is closed. - Partially close the air control.
	Excessive draught.	<input checked="" type="checkbox"/>	- Install a draught stabiliser to the connector pipe.
	Poor quality wood.		- Do not continuously burn small wood, sticks, bundles, carpentry offcuts (plywood, pallets), etc.
<i>Smokes when lighting up.</i>	Flue duct is cold.		- Burn paper and kindling wood to increase heat.
	Room is in decompression (negative pressure).		- In houses equipped with mechanical ventilation, partly open a window until the fire is well established.
<i>Smokes while burning.</i>	Insufficient draught.	<input checked="" type="checkbox"/>	- Seek advice from a chimney specialist. - Check that the flue is not obstructed, sweep it if necessary,
	Down draught.	<input checked="" type="checkbox"/>	- Install an anti-down draught cowl.
	Room is in decompression (negative pressure).	<input checked="" type="checkbox"/>	- In houses equipped with mechanical ventilation, an outside air intake must be installed for the chimney.
<i>Low heat output.</i>	Poor quality wood.		- Use the recommended fuel.
	Poor mixing of the convection air.		- Check the air flow system (air inlet, piping, air outlet). - Check that the next rooms are equipped with ventilation grids to help out the hot air circulation.

4 Spare parts

When ordering spare parts, specify **the stove type** and **serial number**, including the **colour index** (on the guarantee or identification plate), **the name of the part** and **the part number**.

Example : Wood stove “ARDENNES”, model **134 13 15**, the colour index **Y**, top plate **352165 EF**

Y = 134 13 15 Y **B** = 134 13 15 B **E** = 134 13 15 E **N** = 134 13 15 N
L = 134 13 15 L **P** = 134 13 15 P **C** = 134 13 15 C

N°	Code	Description	Type	Y	L	B	P	E	C	N	Qty
1	207315	Back panel		Y	L	B	P	E	C	N	01
2	222575	Flue baffle		Y	L	B	P	E	C	N	01
3	236135	Sealing plate		Y	L	B	P	E	C	N	01
4	259015	Fixing plate		Y	L	B	P	E	C	N	08
5	259037	Fixing plate		Y	L	B	P	E	C	N	02
6	270414	Air control flap		Y	L	B	P	E	C	N	01
7	300132 77	Leg			L						04
7	300132 EF	Leg		Y							04
7	300132 MK	Leg							C		04
7	300134 RH	Leg					P				04
7	300132 RJ	Leg				B					04
7	300132 RP	Leg						E			04
7	300132 EP	Leg								N	04
8	300491 EF	Base		Y	L	B	P	E	C	N	01
9	301172 77	Ash pan door			L						01
9	301172 EF	Ash pan door		Y							01
9	301172 MK	Ash pan door							C		01
9	301172 RH	Ash pan door					P				01
9	301172 RJ	Ash pan door				B					01
9	301172 RP	Ash pan door						E			01
9	301172 EP	Ash pan door								N	01
10	303860 EF	Flue collar		Y	L	B	P	E	C	N	01
11	305016	Firebrick		Y	L	B	P	E	C	N	01
12	305214	Firebrick		Y	L	B	P	E	C	N	01
13	306285	Back wall		Y	L	B	P	E	C	N	01
14	309233	Grate		Y	L	B	P	E	C	N	01
15	310734 77	R. side panel			L						01
15	310734 EF	R. side panel		Y							01
15	310734 MK	R. side panel							C		01
15	310734 RH	R. side panel					P				01
15	310734 RJ	R. side panel				B					01
15	310734 RP	R. side panel						E			01
15	310734 EP	R. side panel								N	01
16	310830 77	L. side panel			L						01
16	310830 EF	L. side panel		Y							01
16	310830 MK	L. side panel							C		01
16	310830 RH	L. side panel					P				01
16	310830 RJ	L. side panel				B					01
16	310830 RP	L. side panel						E			01
16	310830 EP	L. side panel								N	01
17	315614	Air duct		Y	L	B	P	E	C	N	01
18	319738	Grate support		Y	L	B	P	E	C	N	01
19	322717	Supplementary support		Y	L	B	P	E	C	N	01
20	326602	Flue baffle		Y	L	B	P	E	C	N	01
21	327905 77	Ash pan guide			L						01
21	327905 EF	Ash pan guide		Y							01
21	327905 MK	Ash pan guide							C		01
21	327905 RH	Ash pan guide					P				01
21	327905 RJ	Ash pan guide				B					01
21	327905 RP	Ash pan guide						E			01
21	327905 EP	Ash pan guide								N	01
22	330022	Hearth plate		Y	L	B	P	E	C	N	01
23	331001	Adapter		Y	L	B	P	E	C	N	01
24	331700	Support		Y	L	B	P	E	C	N	01
25	331800 77	Main door			L						01
25	331800 EF	Main door		Y							01

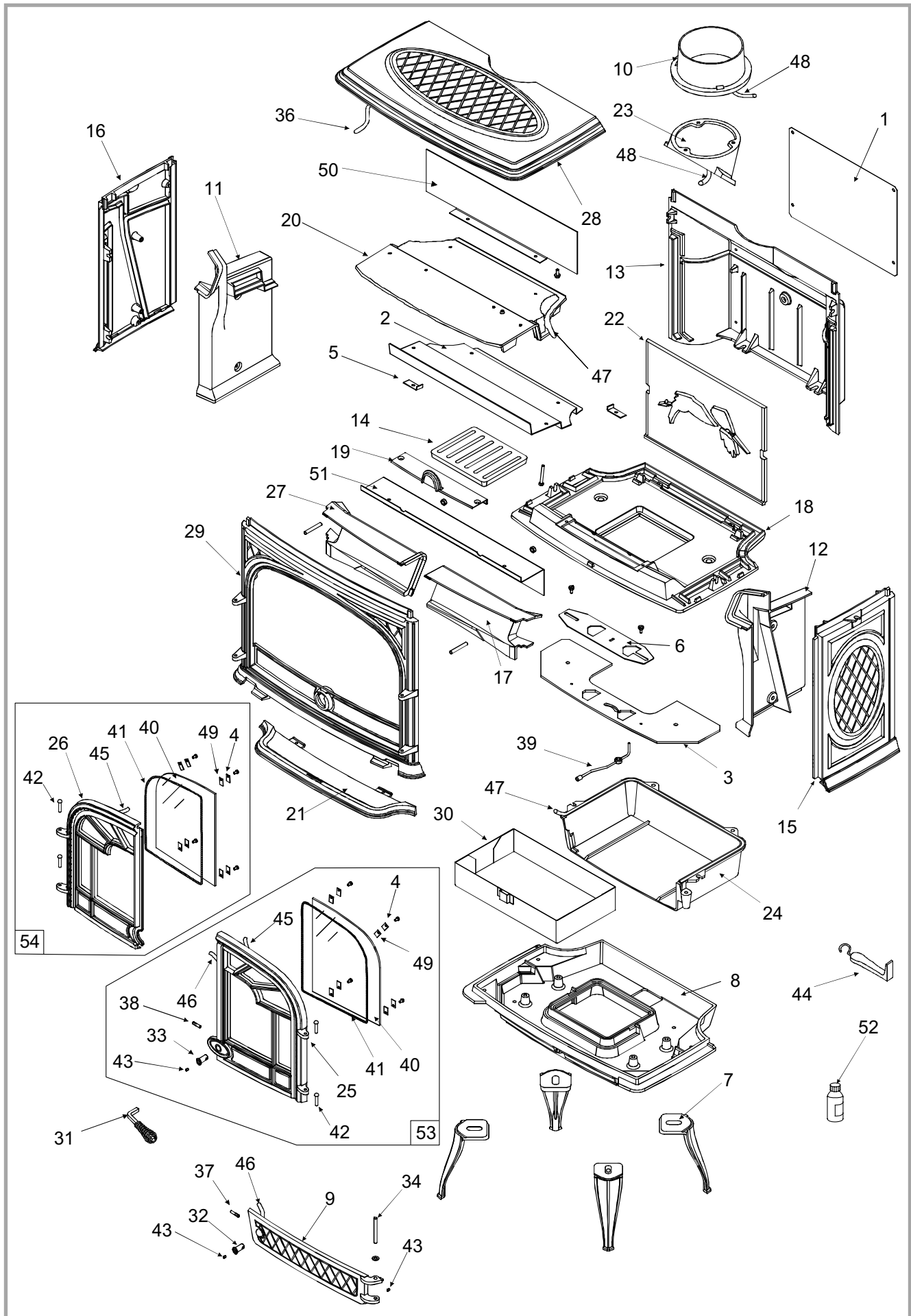


Figure 6 - Spare parts view

Y = 134 13 15 Y B = 134 13 15 B E = 134 13 15 E N = 134 13 15 N
 L = 134 13 15 L P = 134 13 15 P C = 134 13 15 C

N°	Code	Description	Type	Y	L	B	P	E	C	N	Qty
25	331800	MK	Main door						C		01
25	331800	RH	Main door				P				01
25	331800	RJ	Main door			B					01
25	331800	RP	Main door					E			01
25	331800	EP	Main door							N	01
26	331900	77	Main door		L						01
26	331900	EF	Main door	Y							01
26	331900	MK	Main door						C		01
26	331900	RH	Main door				P				01
26	331900	RJ	Main door			B					01
26	331900	RP	Main door					E			01
26	331900	EP	Main door							N	01
27	332003		Air duct	Y	L	B	P	E	C	N	01
28	352165	77	Top plate		L						01
28	352165	EF	Top plate	Y							01
28	352165	MK	Top plate						C		01
28	352165	RH	Top plate				P				01
28	352165	RJ	Top plate			B					01
28	352165	RP	Top plate					E			01
28	352165	EP	Top plate							N	01
29	359806	77	Front plate		L						01
29	359806	EF	Front plate	Y							01
29	359806	MK	Front plate						C		01
29	359806	RH	Front plate				P				01
29	359806	RJ	Front plate			B					01
29	359806	RP	Front plate					E			01
29	359806	EP	Front plate							N	01
30	624045		Ash pan	Y	L	B	P	E	C	N	01
31	158626		Handle	Y	L	B	P	E	C	N	01
32	101054		Axle	Y	L	B	P	E	C	N	01
33	101055		Axle	Y	L	B	P	E	C	N	01
34	101057		Axle	Y	L	B	P	E	C	N	01
36	105006		Gasket	Y	L	B	P	E	C	N	2 m
37	134705		Pin	Y	L	B	P	E	C	N	01
38	134711		Pin	Y	L	B	P	E	C	N	01
39	179624		Regulator shaft	Y	L	B	P	E	C	N	01
40	188829		Refractory glass	Y	L	B	P	E	C	N	02
41	181632		Gasket	Y	L	B	P	E	C	N	2 m
42	110404		Hinge pin	Y	L	B	P	E	C	N	04
43	189825		Screw	Y	L	B	P	E	C	N	02
44	808001	ED	Hand tool	Y	L	B	P	E	C	N	01
45	181634		Gasket	Y	L	B	P	E	C	N	1,64 m
46	181633		Gasket	Y	L	B	P	E	C	N	1,33 m
47	181625		Ceramic rope	Y	L	B	P	E	C	N	3,16 m
48	142316		Gasket	Y	L	B	P	E	C	N	1 m
49	142881		Gasket	Y	L	B	P	E	C	N	08
50	269501		Deflector	Y	L	B	P	E	C	N	01
51	269449		Deflector	Y	L	B	P	E	C	N	01
52	161039		Touch-up paint				P				01
53	988920		Right Complete door							N	01
53	988922		Right Complete door	Y							01
53	988924		Right Complete door		L						01
53	988926		Right Complete door			B					01
53	988928		Right Complete door				P				01
53	988930		Right Complete door					E			01
53	988932		Right Complete door						C		01
54	988744		Left Complete door							N	01
54	988923		Left Complete door	Y							01
54	988925		Left Complete door		L						01
54	988927		Left Complete door			B					01
54	988929		Left Complete door				P				01
54	988931		Left Complete door					E			01
54	988933		Left Complete door						C		01



Guarantee certificate

Legal guarantee

The specifications, dimensions and information shown on our documents are provided for information purposes only and under no circumstances are binding upon the vendor.

With the aim of constantly improving our equipment, all modifications considered as necessary by our departments may be made without notice.

The provisions of the present guarantee certificate are not excluding or limiting the owner of the equipment's rights, concerning the legal guarantee regarding faults or hidden vices which applies in all circumstances, in the conditions detailed in articles 1641 and following of the civil code, and in the country in which the equipment was purchased.

Contractual guarantee

Our equipment is guaranteed against faults and hidden vices subject to the following conditions:

- 1) Installation and adjustment of the device by a professional installer.
- 2) Observance of the instructions provided in our technical documents and our installation/adjustment instructions.
- 3) The installation, use and maintenance of the device carried out in conformity with the applicable standards and legislation, and with the indications provided in the technical instructions accompanying the device.

This guarantee covers the replacement, in our factory, of parts recognised as being defective from the outset by our "Guarantee Inspection" Department. Carriage and labour is at the user's cost. Moreover, if the repair or

replacement of parts covered by the guarantee is found to be too costly vis-à-vis the price of the appliance, the decision to replace or repair the appliance will be taken by the vendor.

Our guarantee is for 2 (two) years for all appliances, with the exception of closed combustion fireplace and inserts for which our guarantee is 5 (five) years excluding the following:

- 1) Indicator lights, fuses, electrical elements and fans.
- 2) Parts subject to wear or in contact with high temperatures namely: soles and burner grills, bottom plates baffles, ash pans, paintwork and surface treatments for decorative parts. Also excluded from this guarantee are seals and windows.
- 3) Any damage which may result from the use of the appliance with a fuel other than that stipulated in our instructions.
- 4) Damage occurring to parts caused by elements outside the appliance (down draught, storm damage, damp, abnormal pressure or vacuum, heat shocks, etc.).
- 5) Damage to electrical parts caused by plugging in and using the appliance on a mains system, the voltage of which (measured at the entrance to the appliance) is 10% above or below the nominal voltage of 220 V.

Exclusion of liability

In the case of a product manufactured at the client's request, under no circumstances may we, as a subcontractor, be considered liable vis-a-vis the client or third parties for defects arising from the installation or a design fault with the item in question.

Name and address of the installer : _____

Telephone : _____

Name and address of the customer : _____

Date of installation : ____ / ____ / ____

Model of the appliance : 134 13 15

Color : Y L B P E C N

Serial number : _____

• This certificate has to be completed and kept carefully.
In case of claims, send a copy of this to :

STAUB FONDERIE, BP 73, 59660 MERVILLE, FRANCE.