

FRANCO BELGE 

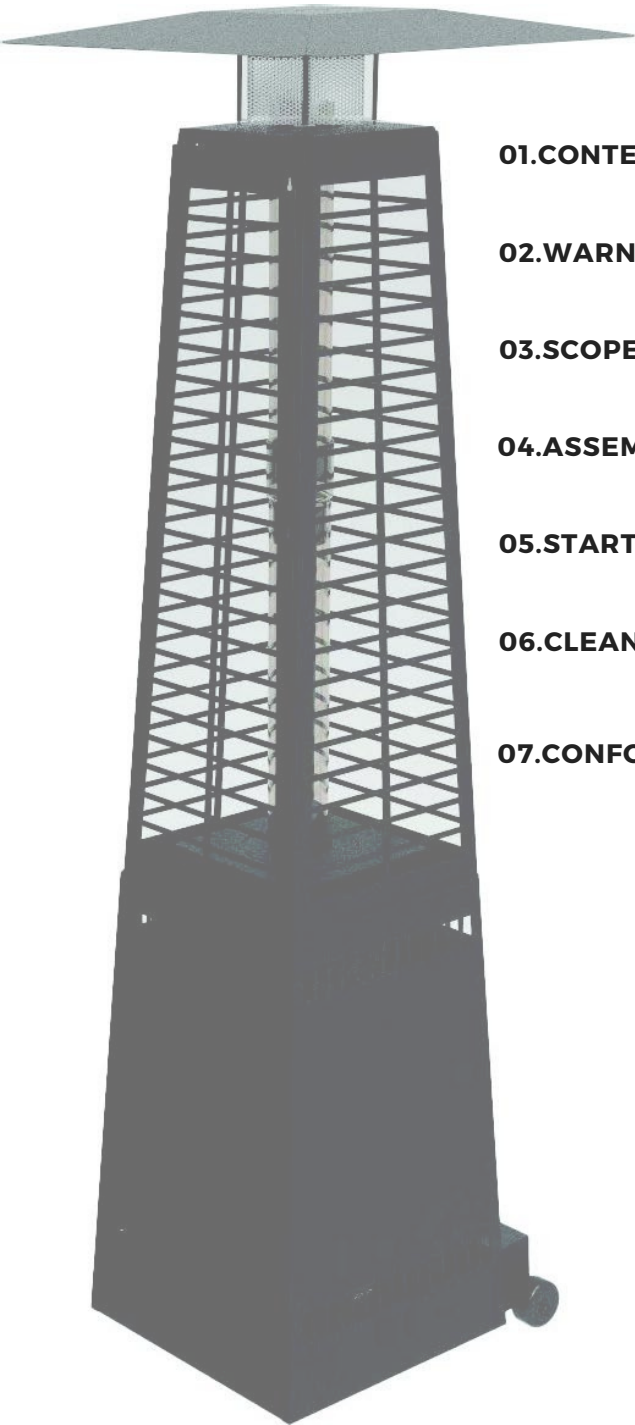
PELLET PATIO HEATER



Franco Belge Europe s.A.
127ieme RIF, 15 Zoning industriel
5660 Mariembourg, Belgium
info@fbeurope.be
+32(0)60/399.131

English

FRANCO BELGE
PELLET PATIO HEATER



01.CONTENT	30
02.WARNING NOTICE	31
03.SCOPE OF DELIVERY	32
04.ASSEMBLY	34
05.STARTUP	38
06.CLEANING, CARE AND MAINTENANCE	41
07.CONFORMITY	41

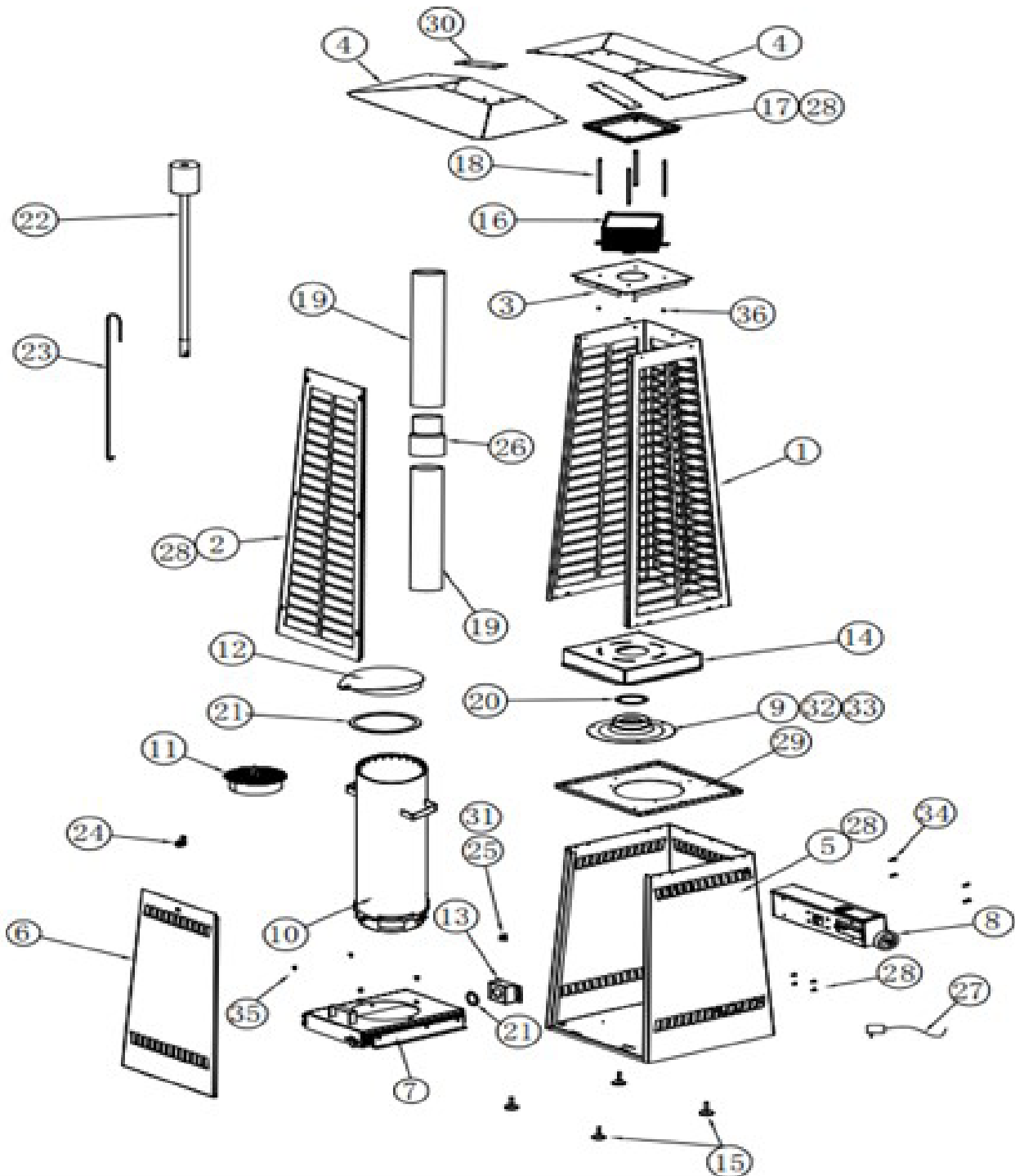
02 WARNING NOTICE

Please read and understand these instructions completely before attempting to assemble, operate or install the product.

This manual contains important information about the installation, operation and maintenance of this patio heater. General safety information is presented on these first pages and is also found throughout this manual. Retain this manual for future reference and to educate new users of this product. This manual should be read in conjunction with the labeling on the product. Safety precautions are essential when dealing with mechanically operated equipment. These precautions are required when using, storing and maintaining this item. Using this equipment with due respect and caution will reduce the possibility of personal injury or property damage.

- This equipment must be used outdoors or in a well-ventilated area and must not be installed or used indoors.
- Do not move this equipment while it is operating or when it has not cooled down.
- Do not attempt to modify the unit in any way.
- Repairs should be performed by a qualified person.
- Pay particular attention to tilting of the unit during high winds.
- The heater should be inspected by a qualified service person before use and at least once a year. More frequent cleaning may be required if necessary.
- The unit begins to make popping sounds during use (a slight popping sound is normal when the unit is extinguished).
- Any guards or other protective devices removed for heater maintenance must be replaced before the heater is operated.
- Children and adults should be warned of the dangers of high surface temperatures and should stay away to avoid burns or ignition of clothing.
- Young children and pets should be supervised when in the area of the heater.
- Clothing or other combustible materials should not be hung on the unit or placed on or near the unit.
- Do not place objects on or near the unit. Certain materials or objects, if stored under or near this unit, will be exposed to radiant heat and may be severely damaged.
- Do not use or store flammable materials near this unit.
- Do not spray aerosols near this unit during operation.
- Always keep at least 1 m away from combustible materials.
- Always position the device on a firm and level surface.
- Clean the firing plate before use.

03 SCOPE OF DELIVERY



Nr description

1 Upper coaming	21 Cotton rope
2 Shrouding	22 Sponge brush
3 Upper shrouding	23 Tool
4 Raining Cap	24 Lock
5 Down coaming	25 Temperature switch
6 Down shrouding	26 Glass connector
7 Basement for burner	27 Adapter
8 Electric box	28 Screw
9 Fire guide plate	29 Upper Shrouding
10 Burner	30 Rain cap connect plate
11 Burning board	31 Screw
12 Burner cover	32 Screw
13 Air inlet chamber	33 Gasket
14 glass tube basement	34 Screw
15 Foot	35 Screw
16 Burning grill	36 Nut
17 Rain cap fixed plate	
18 Rain cap supprter	
19 Glass	
20 Cotton rope	

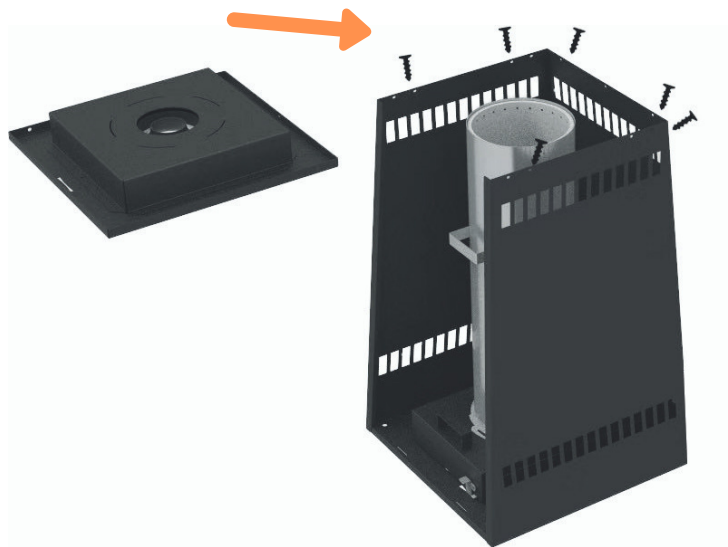
Technical Details

Name	Franco Belge Pellet Patio Heater
Power	14 kW (14'000 W)
Efficiency	95 %
Dimensions	70 x 217 x 70 cm
Carton	56 x 135 x 56 cm
Weight	70 / 79 kg
Capacity	10 kg
Duration	300 min
Usage	2 kg/h
Fuel	Wood pellets

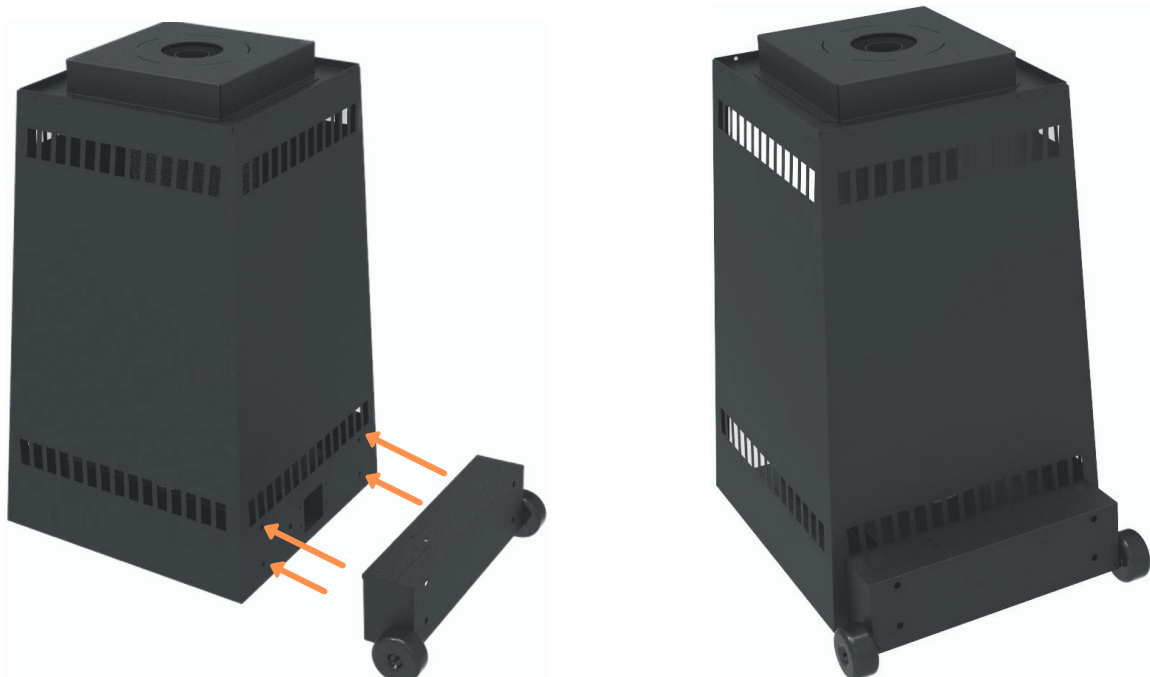
04 ASSEMBLAGE



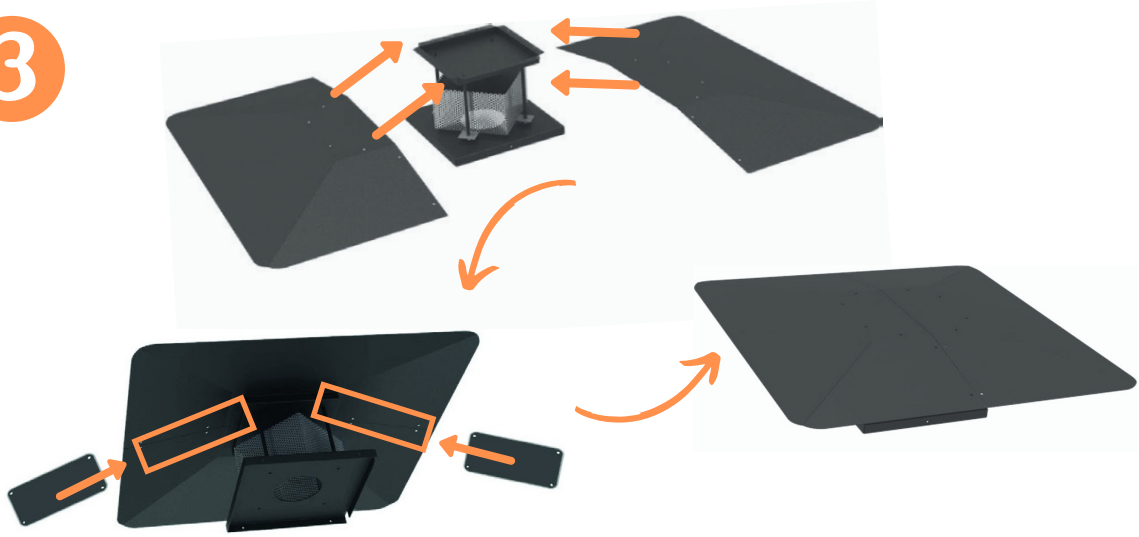
1



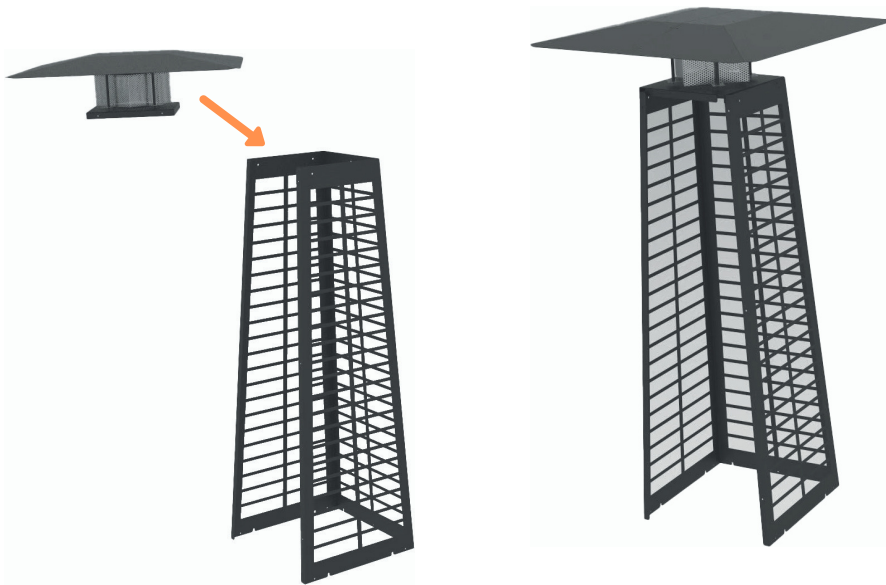
2



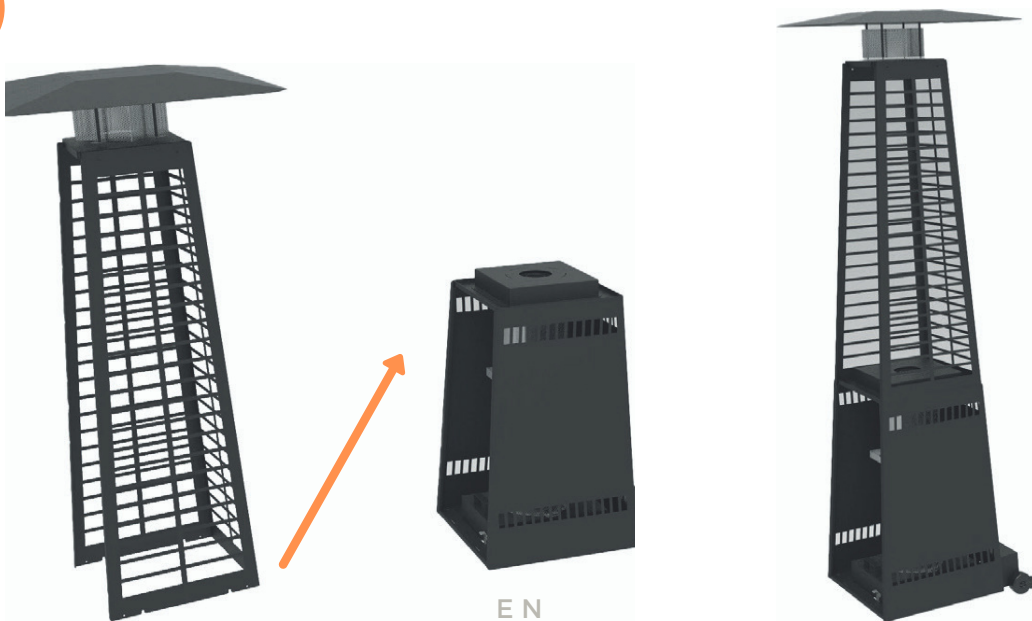
3



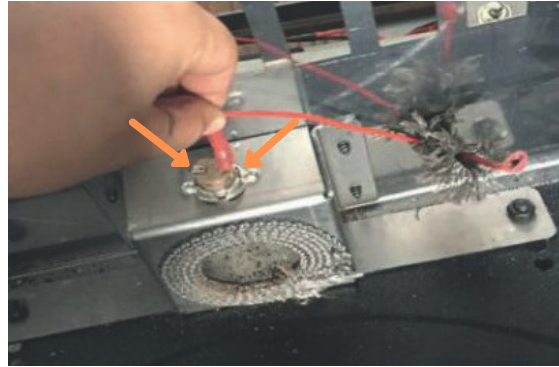
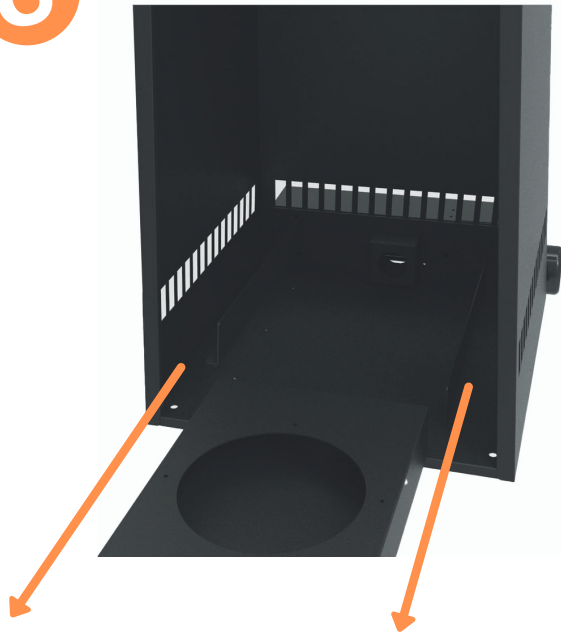
4



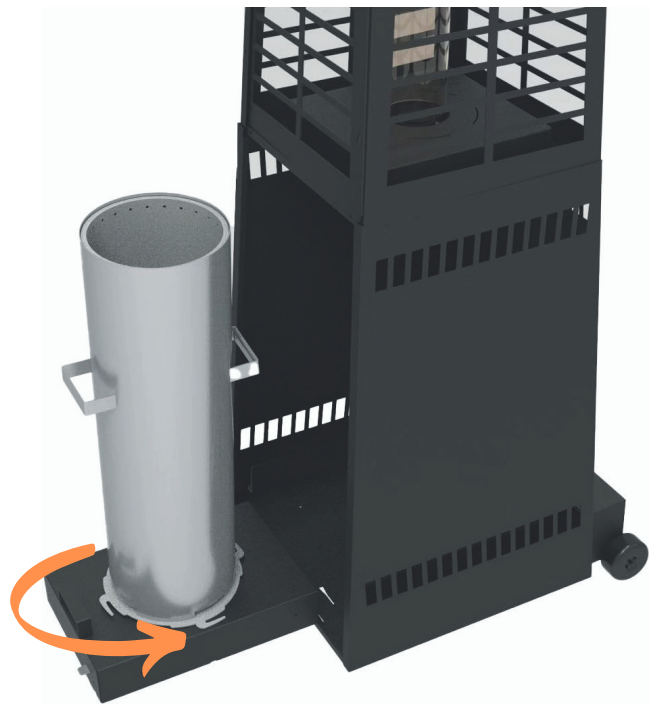
5



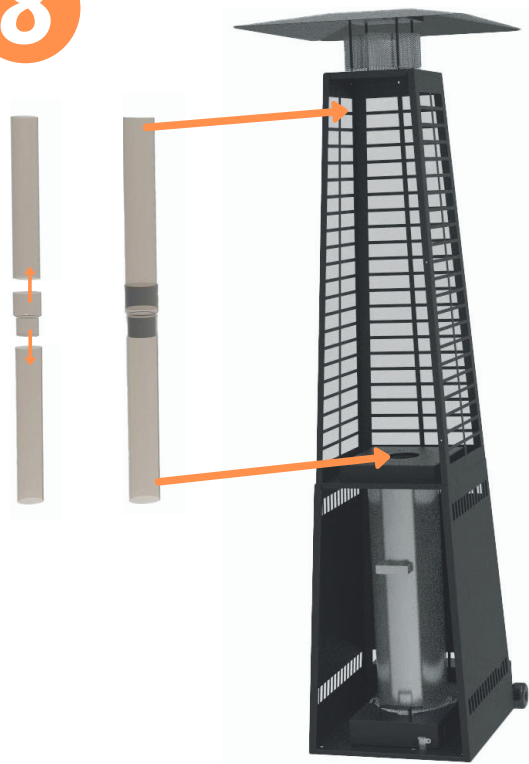
6



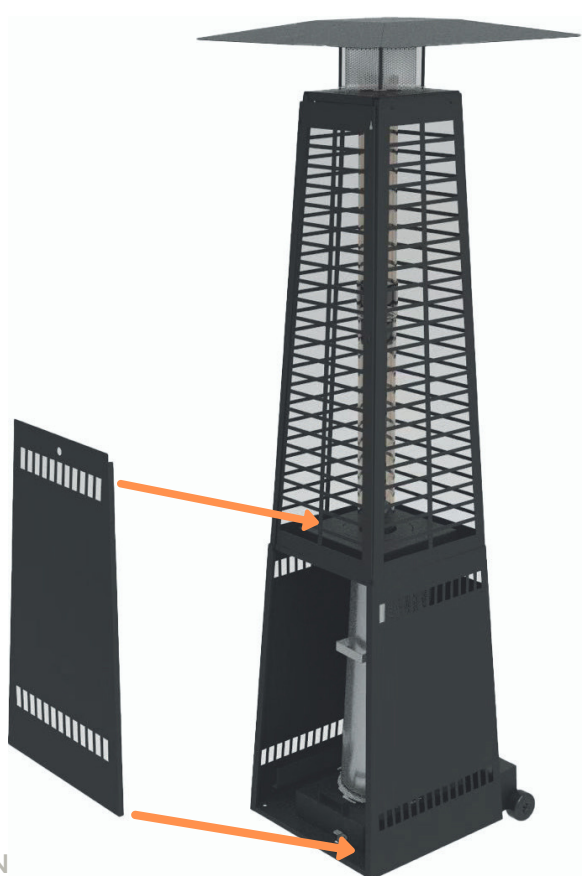
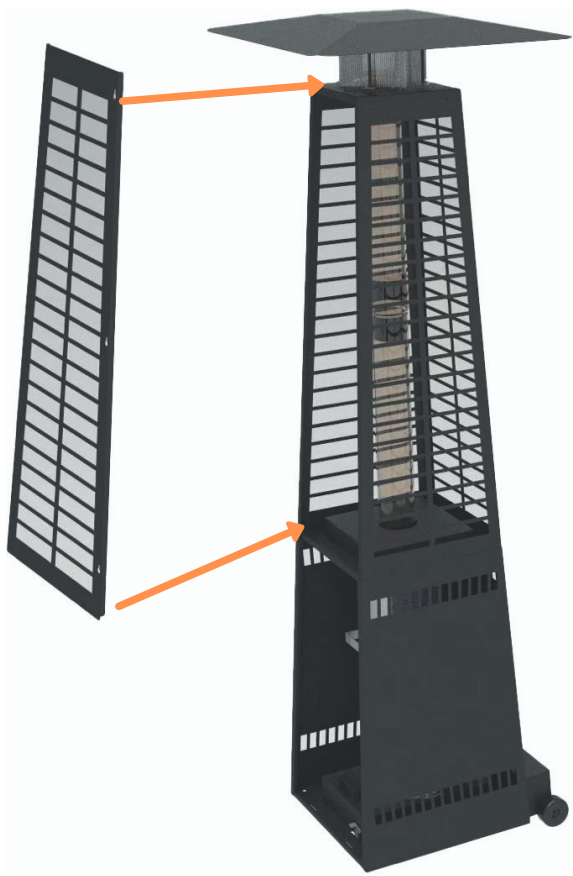
7



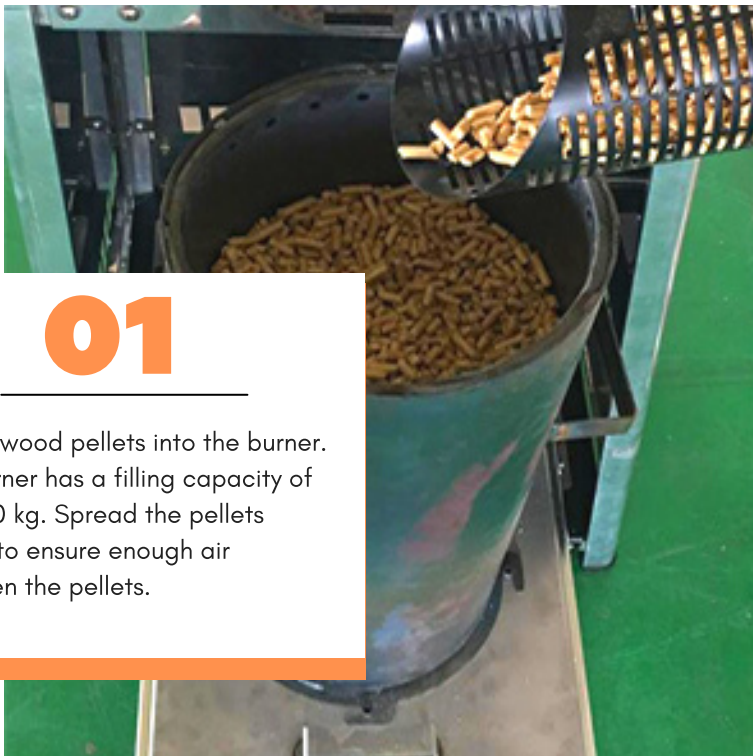
8



9

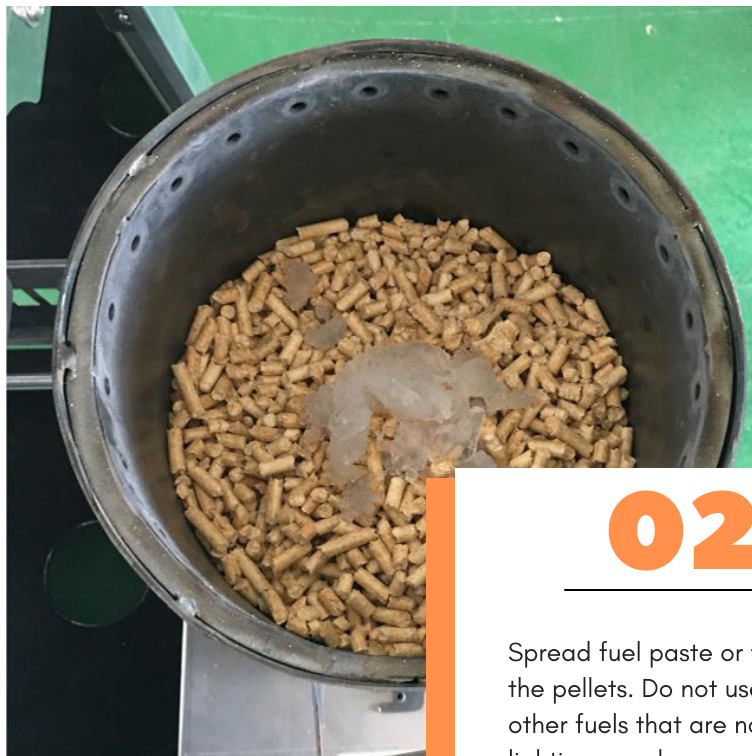


05 UTILISATION



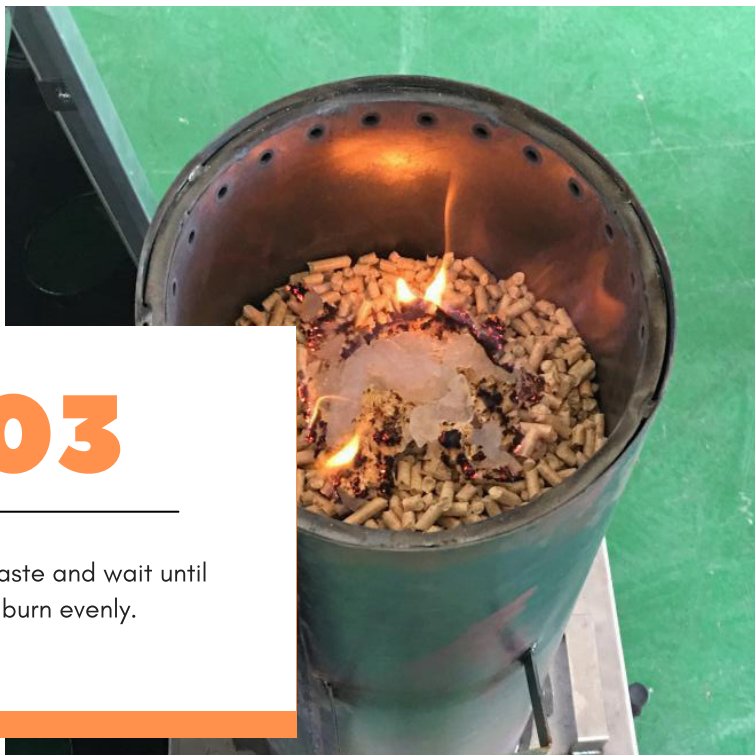
01

Fill the wood pellets into the burner. The burner has a filling capacity of up to 10 kg. Spread the pellets evenly to ensure enough air between the pellets.



02

Spread fuel paste or fuel cubes on the pellets. Do not use gasoline or other fuels that are not suitable for lighting wood.



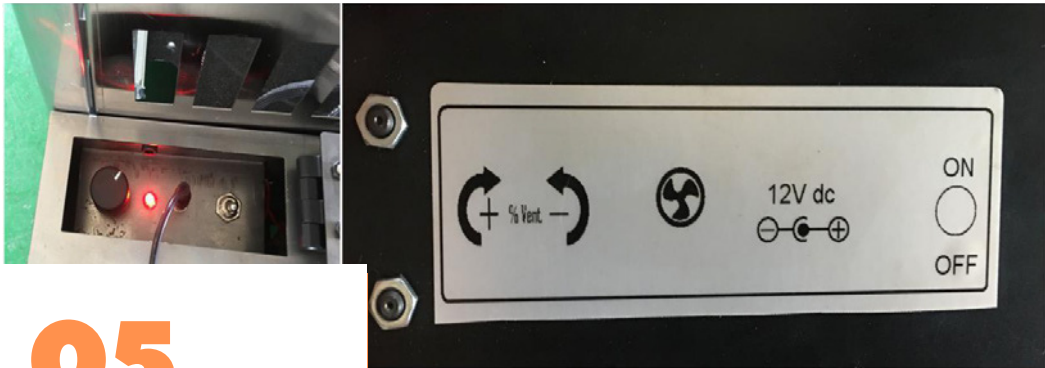
03

Light the paste and wait until the pellets burn evenly.



04

After about 5-8 minutes, the pellets will burn evenly. Slide the burner back into the unit and secure the cover.



05

Connect the power source and turn the unit on. You can now use the knob to control the air supply and thus the strength of the flame. When the pellets are used up, keep the fan running to cool the burner.



Extinguishing

Take out the drawer and put the cover on the burner to smother the flame.

Caution

The lid and the burner become very hot and the embers can last up to 24 hours. Be sure to wait until the appliance has cooled down completely before storing it.

06 CLEANING, CARE AND MAINTENANCE

Storage

Before storing the unit, remove any ash and leftover pellets. Do not attach the weather protection hood until the unit has cooled down completely.

Cleaning

Clean coated surfaces with a soft, damp cloth. Never clean the heater with flammable or corrosive cleaners. Make sure that the burner is cleaned regularly. Insects can get caught in the burner housing and burn during operation.

Maintenance

Perform an inspection after extended periods of non-use. If there is damage to the technology, do not use the unit and contact customer service.

07 CONFORMITY

Warranty

All products are checked from our company before the delivery. In case that there is a lack on your product, please contact the vendor. Please bring your proof of purchase for guarantees. Please save the packaging materials of the unit.

Disposal

Please remove the heater properly. You can bring the product to any specialist dealer for the removal.

Technical changes

Technical changes in technique and design are possible.

CE Declaration of Conformity

This device complies with the following standards

EWR	EN 14543:2017
EMC	EN 55014-1:2017
	EN 55014-2:2015
	EN IEC 61000-3-2:2019
	EN 61000-3-3:2013 + A1:2019
EWR	2016/426
EMC	2014/30/EU



DISPOSAL INSTRUCTIONS FOR THE ELECTRICAL PART OF THE PRODUCT

In accordance with Article 26 of the Decree-Law of 14 March 2014 implementing Directive 2012/19/EC, and the Law of 31 March 2015 implementing Directive 2015/863/EU on the reduction of the use of hazardous substances in electrical and electronic equipment and on waste management.

The crossed-out dustbin symbol on the machine or packaging indicates that the waste generated at the end of its useful life must be collected separately from other waste. The user must therefore take the device to the appropriate collection points at the end of its service life. Sort electronic and electrical waste or send back to the retailer when purchasing new, equivalent devices in a one-to-one process. Appropriate separate collection for subsequent commissioning of the equipment to be recycled, treatment and environmentally sound disposal helps to avoid possible adverse effects on the environment and health, and promote the reuse and/or recycling of the materials to which they belong. Misuse of this product by the user will result in the application of the administrative penalties provided for in the applicable legislation. Batteries contained in the device must be disposed of separately in the appropriate containers for the collection of used batteries.



DISPOSAL OF BATTERIES AND ACCUMULATORS

In accordance with Legislative Decree 188 of 20 November 2008 implementing Directive 2006/66/EC on batteries, accumulators and related waste, the symbol of the crossed-out waste bin on the battery indicates that the disposal of used batteries is prohibited in household waste.

Single-use and rechargeable batteries contain substances that are highly polluting for the environment. The user is obliged to dispose of used batteries at collection points in the municipality or in appropriate containers. This service is free. In this way, legal requirements are adhered to and the environment protected. The symbols identifying hazardous materials that may be present in single-use and rechargeable batteries are as follows: Hg = Mercury, Cd = Cadmium, Pb = Lead.