

# ***AGA Six Four Series*** ***(with gas hob)***

assembly instructions  
for models supplied in modular format

This guide must be read in conjunction with the normal product installation instructions

# AGA Six Four series (Gas Hob)

--- assembly instructions for modular models

2

## Installation Requirements

### Floor :-

To ease handling the product may be delivered in five separate cartons, the heaviest of which is 86kg. This requires the cooker to be assembled on site in accordance with these instructions.

The floor should be level and strong enough to carry the total weight of 245kg. There are levelling adjustments fitted to the Aga to compensate for minor variations.

This product requires a safety chain and stability bracket to be fitted.

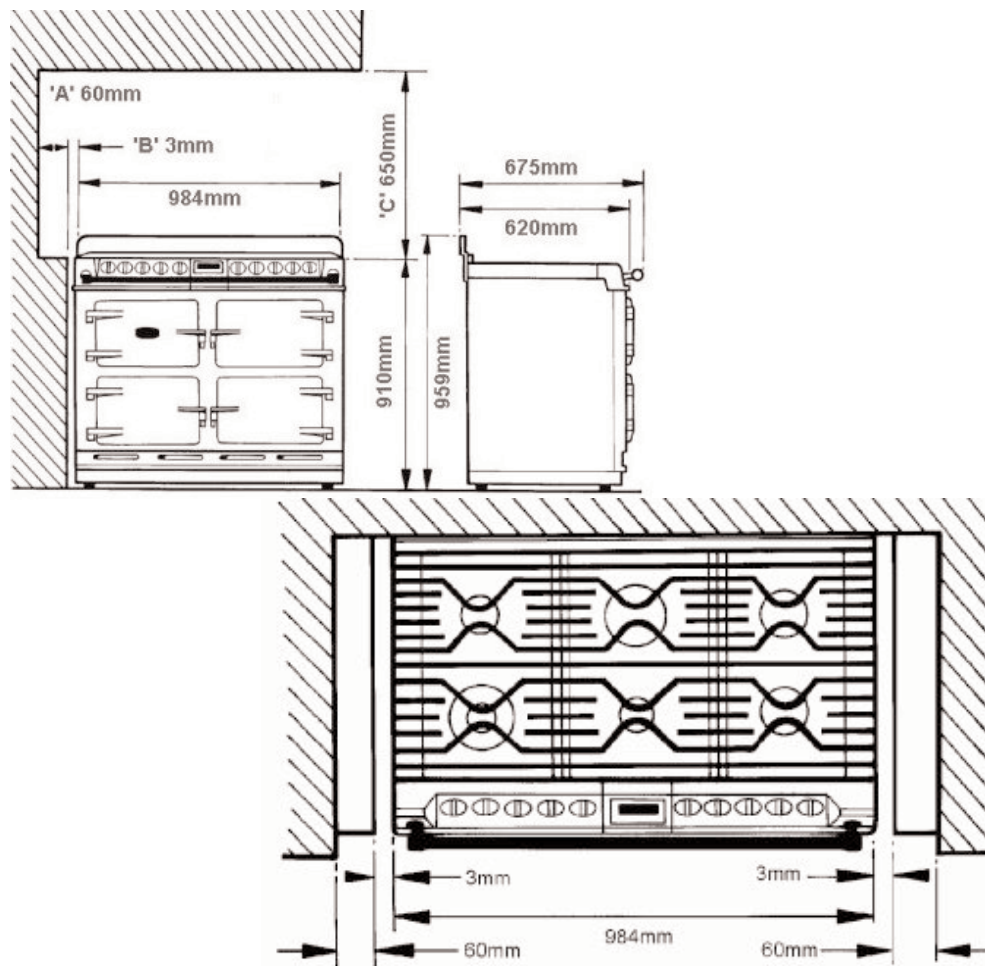
### Clearances:-

Refer to diagram below

Where the Aga is to be 'slot' fitted, a gap of 3mm is recommended each side, to allow the product to slide in easy. See dimension 'B'

Dimension 'A' 60mm, is the clearance to be provided against any side wall which extends above the level of the hob, to allow for protruding utensil handles.

Dimension 'C' 650mm is the minimum clearance required to any surface immediately above the hob. **but**, if a cooker hood is to be installed, the clearance must be increased to 800mm. We recommend the Aga CH900 hood which has been specifically designed for this product.



# AGA Six Four series (Gas Hob)

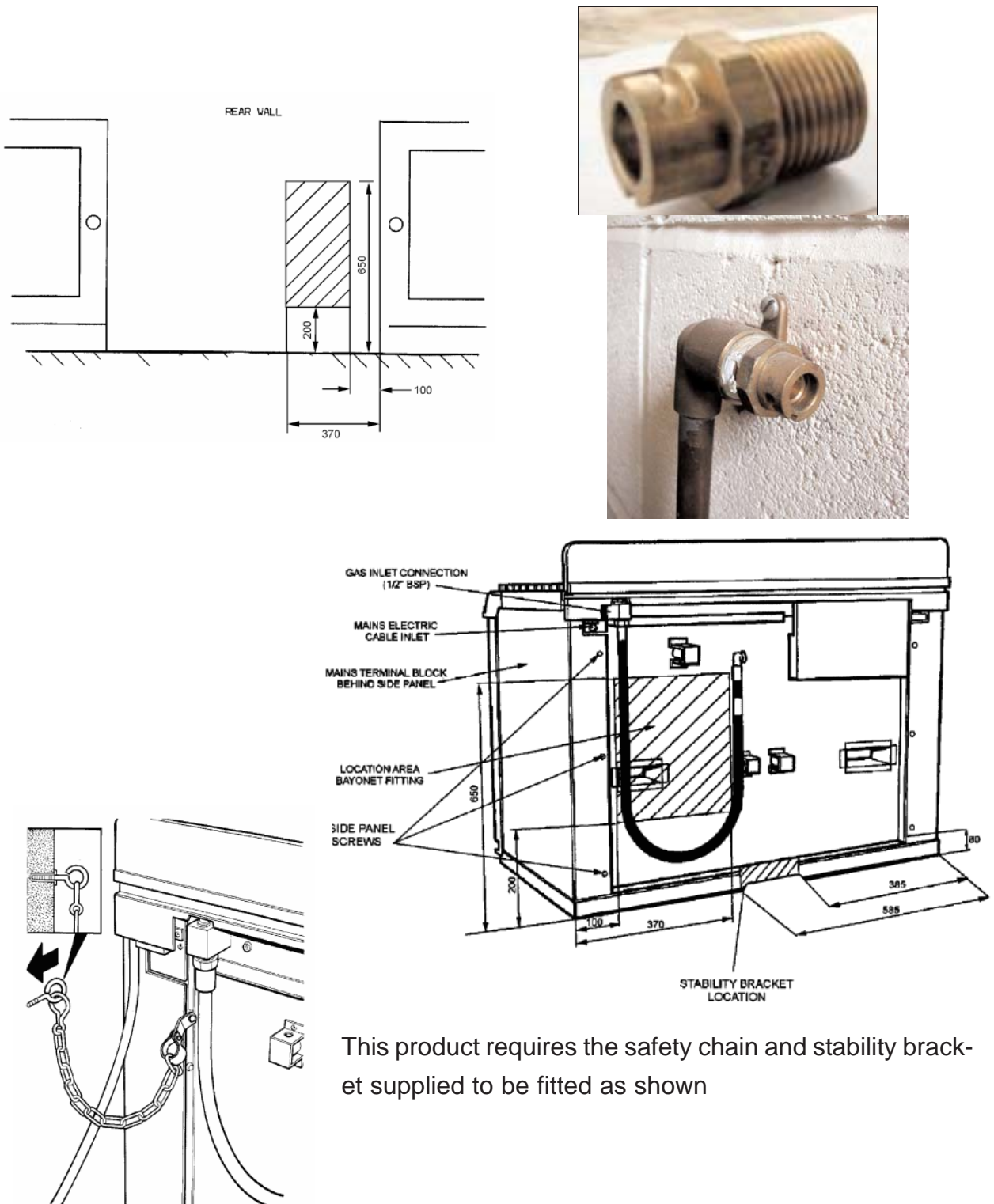
--- assembly instructions for modular models

3

## Gas Supply:-

The gas supply pipe should not be less than 15mm diameter. A fixing kit is supplied with the product suitable for the relevant gas, i.e. LPG or Natural. This includes a 48" length bayonet hose & adaptor, stability bracket & chain.

The gas fittings must not protrude further than 45 mm from the wall, therefore the special straight bayonet adaptor supplied should be used, in conjunction with a 'flat' wall bracket plate, rather than using an elbow. The gas supply must terminate within the shaded area shown below.



## AGA Six Four series (Gas Hob)

--- assembly instructions for modular models

4

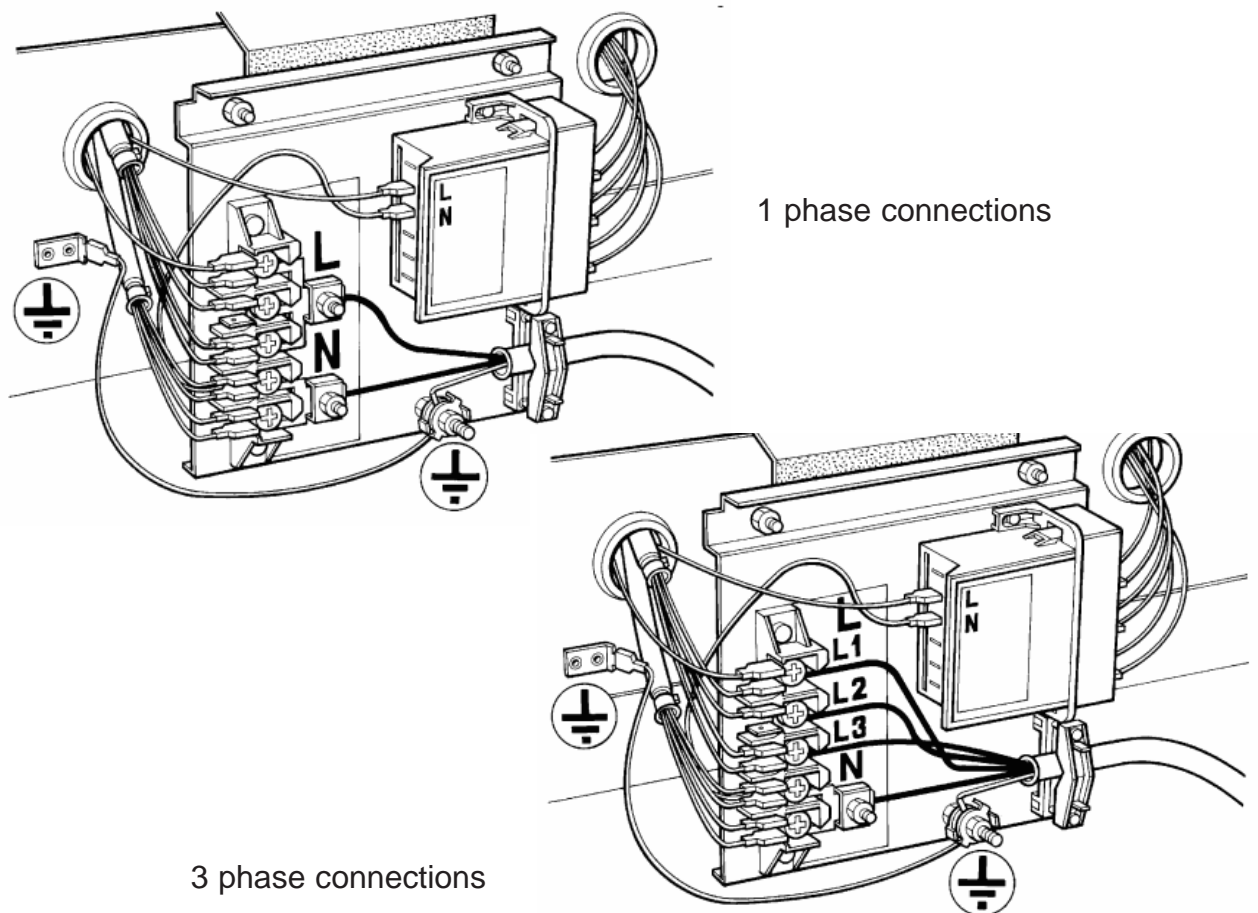
### Electrical Supply:-

The Six-Four requires connection to a single phase 30 amp supply, using a 6mm<sup>2</sup> cable. Alternatively, a 3 phase & neutral supply may be used with 2.5mm<sup>2</sup> cable, noting that in this case the load is as follows L1 2.0 kW, L2 2.3 kW, L3 3.0 kW

Conversion between 1 phase / 3 phase is easily accomplished as shown below

An appropriate electrical isolator must be fitted within 2 metres of the Aga, but not sited immediately above it. In the case of an existing supply, it should be confirmed that both the isolator and the cable back to the distribution board are both rated to deliver 30 amp. An excess length/loop of cable should be provided at the rear to permit connection into the Aga, into the position shown overleaf.

Cable entry is at the Right-hand side of the rear panel at high level.



## AGA Six Four series (Gas Hob)

--- assembly instructions for modular models

5

### Assembly procedure:-

1. Check that all 5 cartons are present and carefully unpack the contents. Remove side panels from oven assembly, but leave rear panel in place to provide a lifting point. Lift oven assembly off of its pallet.



Remove rear panel (7 screws)



From the rear of the Front plate. Remove four outer screws but leave the two centre ones loosely in place.



Lift front-plate onto main oven chassis, engaging the two centre screws into the slotted holes. Ensure that the front-plate drops down into the baseplate and that the apertures line up to the ovens. The seals should be slightly compressed.

## AGA Six Four series (Gas Hob)

--- assembly instructions for modular models

6

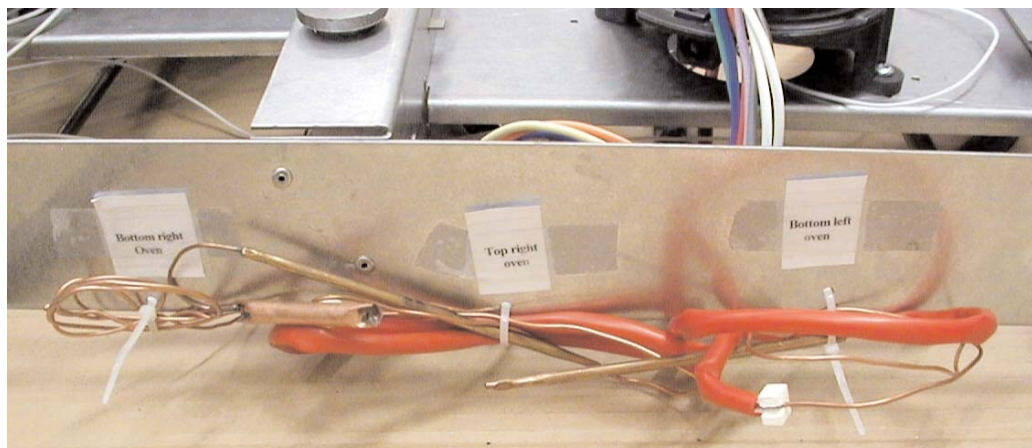


Using an extended length screwdriver passing between the ovens, tighten the centre two screws, then work evenly around the outer ones, ensuring that the ovens seal against front-plate.



Fasten the hotplate chassis down to the the main assembly. 4 screws.

Identify and unwrap the three oven thermostat capillaries. These will be found labelled and tied to the rear of the hotplate chassis.  
To avoid confusion, work with one at a time.



## **AGA Six Four series (Gas Hob)**

**--- assembly instructions for modular models**

**7**

Thread each capillary through into its respective oven and into its retaining clip.



**Lower left**



**Lower right**

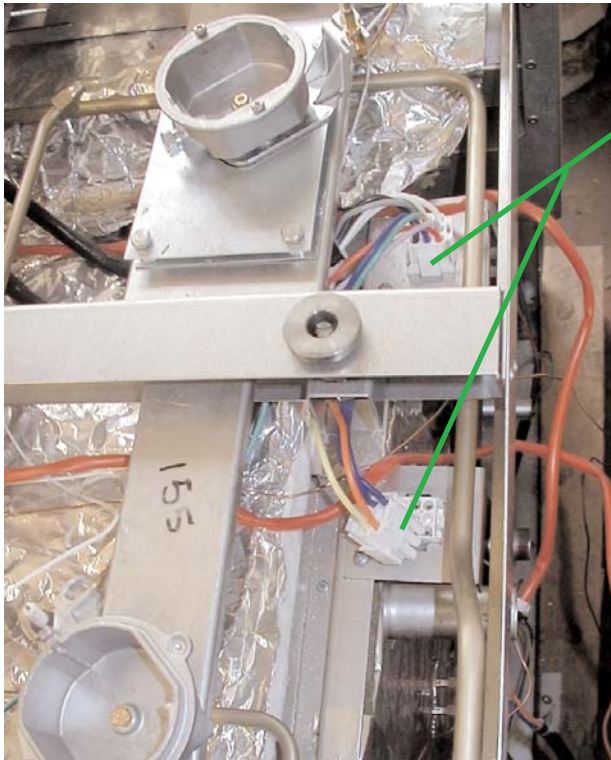


**Top right**

## AGA Six Four series (Gas Hob)

--- assembly instructions for modular models

8



Plug in the two multi-way plugs. They are biased and will only fit into their correct sockets.

Refit rear panel.

**An electrical safety test** must now be performed.

Confirm that the household electrical supply is of correct polarity.

Select 500v on a megger tester and connect the leads on to the appliance connections.

Depress the test button and record results. Meter should read infinity.

Any inconclusive results should be investigated and rectified.

Connect mains supply onto terminals as shown page 3

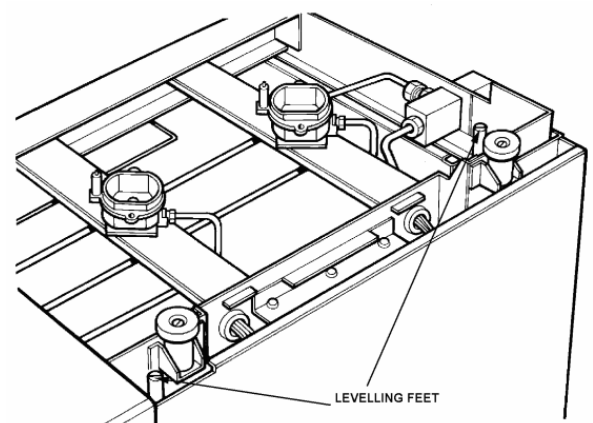
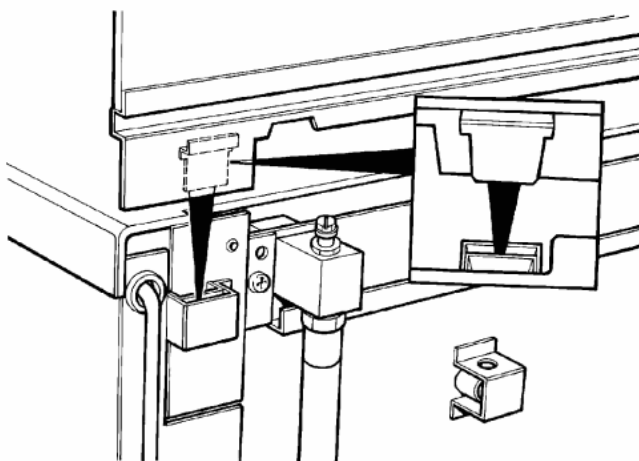
Refit side panels. Note that they drop down into the base then slide forward into position.

Connect flexible gas hose.

Slot splashback into its sockets

Cooker may now be rolled into its final position and gas hose plugged in. Carry out gas tightness test.

Using the four levelling screws, turn clockwise to raise the cooker off of its wheels and to obtain the final level adjustment.

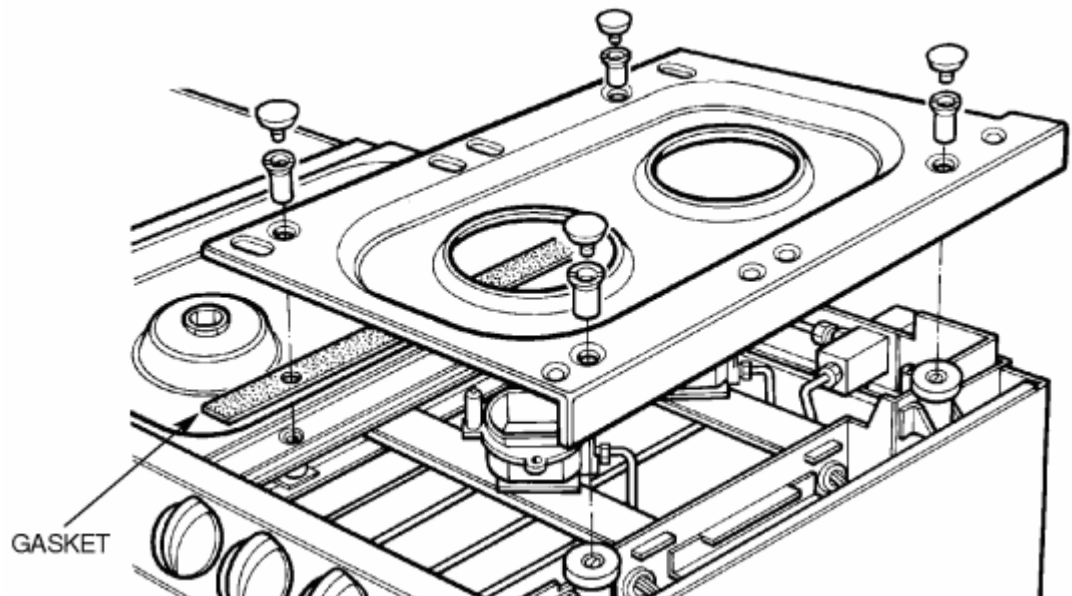




## AGA Six Four series (Gas Hob)

--- assembly instructions for modular models

9



Fit the hotplates into position and secure with the corner stay-nuts and buttons. Remember to locate the gaskets and to connect the earthwires from the castings.

Fit the burners and pan supports as shown in the installation instructions



Check that each oven 'floor' is pushed up tight and seals against the front-plate. Adjustment can be gained by slackening the screw located at the rear of the plate.

Complete installation by fitting the doors and test the correct functioning of ovens, controls and hotplate burners etc.

Demonstrate correct operation to owner.