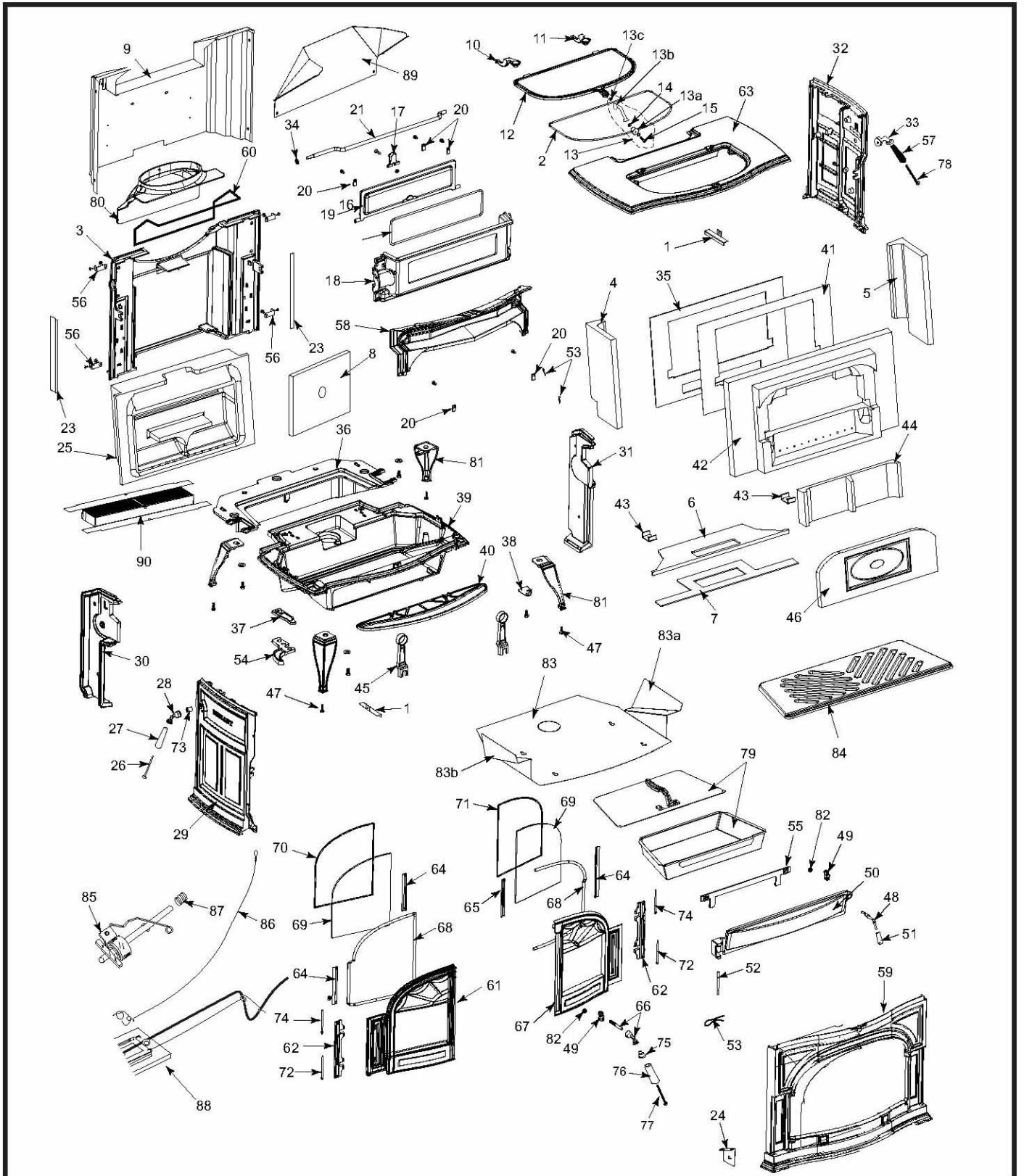


Defiant 2N1 Service Procedures

DEFIANT 2N1 PARTS, HARDWARE & GASKETS



Defiant Woodburning Stove Model 1975 (continued)

Item Description	Part Number	Item Description	Part Number
1. Brick Support Bracket	30005279	48. Ashdoor Handle Shaft	30005301
2. Griddle Gasket	1203668	49. Pawl Assy 3/4 short adj	30005157
3. Back	30005242	49a. Spring Washer	63D0069
4. Refractory Rt End	30005206	50. Ashdoor	30002810
5. Refractory Lt End	30005207	50a. Ashdoor Gasket	1203589
6. Refractory Support	30005233	51. Ashdoor Handle (Wood)	1600663
7. Gasket, Fiber, Refractory Support	30005237	52. Ashdoor Hinge Rod	30002826
8. Back Insulation Board	30005269	53. Cotter Pin, Ashdoor	30001749
9. Outer Back	30005249	54. Ashdoor Bottom Hinge Support	1300642
10. Left Griddle Quadrant	30002399	55. Ashpan Bracket	30001908
11. Right Griddle Quadrant	30002401	56. Rear Side Bracket	30002845
12. Griddle	30005257	57. Thermostat Handle	1600660
13. Complete Griddle Handle Assy	30002775	58. Airwash Manifold, Frt	30005244
13a. Griddle Handle Wood	1600661	59. Front	See Chart Pg. 38
13b. Griddle Handle CRS-BN1	30002715	60. Flue Collar Gasket	30002422
13c. Nut Hex 1/4-20	1203210	61. Left Door	See Chart Pg. 38
14. Griddle Handle Bushing	1201900	62. Door Hinge Strip	1300645
15. Griddle Handle Bolt	1201308	63. Top	See Chart Pg. 38
16. Damper Gasket	1203588	64. Glass Clip	30001715
17. Damper Ramp	1300643	65. Glass Clip (Right Door Only)	30001716
18. Damper Housing	30002821	66. Front Door Handle & Shaft	30002717
19. Damper ¹	30002816	67. Right Door	See Chart Pg. 38
20. Damper Tab ¹	1601488	68. Door Gasket	7000910
21. Damper Rod ¹	1600065	69. Glass Gasket	1203556
23. Gasket, Fiber Back Refractory	30005270	70. Left Door Glass	30005247
24. Rheostat Bracket	30002863	71. Right Door Glass	30005247
25. Refractory, Engine - E/D	30005202	72. Lower Door Hinge Pin	30002727
26. Damper Handle Screw	1201310	73. Spacer (for Damper rod)	1201779
27. Damper Handle	1600644	74. Upper Door Hinge Pin	30002727
28. Damper Handle w/Screw Assy	30002720	75. Complete Handle Assy	30004175
29. Left Side	See Chart Pg. 38	75a. Handle Base Stub	30002714
30. Left Air Manifold	30002818	76. Wood Handle	1600664
31. Right Air Manifold	30005243	77. Handle Bolt	1201310
32. Right Side	See Chart Pg. 38	78. Thermostat Handle Bolt	1201243
33. Thermostat Handle Base Assy	30002716	79. Ash Pan Assy	30001690
34. Washer Damper Rod	1202560	80. Flue Collar	See Chart Pg. 38
35. Fireback Plate, S/S	30005217	81. Leg	See Chart Pg. 38
36. Inner Bottom	30005241	82. Hex Head Jam Nut	1203290
37. Top Ashdoor Hinge	30002836	83. Bottom Heat Shield	30005037
38. Door Handle Bracket	30002844	83a. Bottom Heat Shield Rt Wing	30005038
39. Bottom	30005240	83b. Bottom Heat Shield Lt Wing	30005039
40. Ashlip	See Chart Pg. 38	84. Grate Bottom	30005234
41. Gasket, Fireback	30005209	85. Thermostat Assy.	5005470
42. Refractory, Fireback	30005203	86. Thermostat Cable	5005471
43. Retainer, Inner Cover Refractory	30005248	87. Thermostat Friction Spring	1201846
44. Refractory, Inner Cover	30005205	88. Primary Air Valve Assy.	30005275
45. Andiron	30002827	89. Heat Plate Vertical Flue	30005265
46. Refractory, Access Cover	30005204	90. Catalyst, Ceramic	30005185
47. Leg Leveller	1201745		

Defiant Woodburning Stove Model 1975 (continued)

Shell Enamel Parts - Defiant Model 1975					
Part Name	Classic	Biscuit	Bordeaux	Ebony	Brown Majolica
Top	30002834	30002874	30002915	30002894	30004837
Left Side	30002832	30002872	30002913	30002892	30004834
Right Side	30002831	30002871	30002912	30002891	30004835
Flue Collar	30001576	30002947	30002921	30002910	30004815
Front	30002830	30002873	30002914	30002893	30004836
Ashlip	30002811	30002870	30002911	30002890	30004833
Left Door	30002813	30002876	30002917	30002896	30004842
Right Door	30002812	30002875	30002919	30002895	30004841
Leg	30002835	30002877	30002918	30002897	30004843

NOTES:

In the diagram and throughout this manual, 'left' and 'right' mean as you face the stove.

When ordering parts, be sure to mention the stove's model number.

When ordering external parts, be sure to specify color.

The hardware in the Defiant is in standard sizes; most bolts are 1/4" diameter by 20 threads per inch. Most hardware stores can supply replacement hardware if you specify bolt diameter, number of threads per inch and length. Fasteners inside the firebox should be replaced with stainless steel for ease of future disassembly.

PACKED INSIDE THE STOVE - STOVE BAG KIT

30005221	Parts Bag
30002775	Griddle Handle Brushed Nickel Complete
30002715	Griddle Stub Brushed Nickel
160-0661	Griddle Handle Wooden Knob Only
120-1900	Griddle Bushing (2 Used)
120-1308	8-32 x 1" Phillips Pan Head Screw
120-3210	1/4 Plain Hex Nut
120-5116	Allen Wrench, 1/8" Short Arm
120-5147	Allen Wrench, 5/32" Short Arm
120-2061	#10 x 3/4" Black Phillips Pan Head Sheet Metal Screw (3)
V30004175	Complete Fallaway Handle Package Brushed Nickel
1600664	Wooden Handle
30002714	Lifter only Brushed Nickel
120-1310	Fallaway Handle Screw Only 1/4 -20 x 3"
160-0664	Damper Handle Wood
120-1310	Damper Handle Screw
160-0660	Thermostat Wooden Knob
120-1243	Thermostat Handle Screw #8-32 x 2"
30002863	Rheostat Bracket for Blower Installation
120-2058	#10 x 1/2" Black SMS Qty (7)
120-1504	Wire Tie (rheostat wire)
30005220	Defiant 2N1 Manual

GASKETS

120-3589	3/8" Low Density 6ND Gasket	4.5'	Ash Door
120-3588	5/16" Medium Density 6ND Gasket	3.5'	Damper Opening
700-0910	7/16" Round Gasket	4'	Left Door
		3'	Right Door
30002422	3/8" Adhesive Fiberglass Gasket	16'	Bottom
		6'	Front
		6'	Back for Fireback Refractory
		2.5'	Left Side
		2.5'	Right Side
		2.5'	Front Air Manifold
		6'	Around Stove Panels for Top Seal
		5'	Left Air Plate
		5'	Right Air Plate
		4.25'	Flue Collar
120-3518	Fibre Formed Gasket	1 ea	Primary Air Frame
30005270	Fiber Gasket Strip	2.25'	Back for Refractory Engine Sides
30005237	Fiber Gasket Refractory Support	1	Under Refractory Support
30005209	Fiber Gasket for Fireback	1	Behind Refractory Fireback
30001910	7/16" Adhesive Backed Gasket	6'	Damper Housing
120-3668	5/16" Gasket Wire Fiberglass with Core	4.25'	Top for Griddle
120-3556*	3/16" 4ND Black Fiberglass Gasket	3.5'	Each Glass Panel
30005269	Insulator Board	1	In Back Behind Engine

*000-3427 kit contains enough gasket and cement to gasket all glass with rope gasket

DEFIANT 2N1 1975 HARDWARE

120-0482	¼ -20 x ⅜" Socket Flat Head Screw Blk (1-top to front)	120-1378	¼ -20 x 1¼" Hex Head Cap Screw Z (4-damper housing to back, 1-back ins board to back)
120-0865	¼ -20 x 5/8" Phillips Flat Head Screw Z (2-ashlip to bottom)	120-1376	¼ -20 x 1" Hex Head Cap Screw Gr 5-Blk (enamel only 2- front to sides)
120-0907	¼ -20 x 1" Phillips Round Head Cap Screw Blk (2-flue collar to back)	120-1393	¼ -20 x 1¾" Hex Head Cap Screw Gr 5 SS (2-inner bottom to bottom)
120-0993	¼ -20 x ⅜" Phillips Pan Head Screw Blk (2-outer back to back, 2-fan, 4-rear brackets to back)	120-1396	¼ -20 x 1½" Hex Head Cap Screw Gr 5-Plain (2-front manifold to front, 4-side manifolds to sides)
120-1337	¼ -20 x ⅜" Hex Head Cap Screw (4-bottom heatshield holes, 2-snapstat holes, 2-andirons, 2-o/a to bottom, 2-side brick brackets, 2-left hinge strip, 2-right hinge strip)	120-1374	¼ -20 X ¾" Hex Head Cap Screw (5-ashdoor hinges, 5-front/back/sides to bottom, 4-front/back to sides, 1-primary air plate to front)
120-0809	¼ -20 x 1" Phillips Flat Head Screw Blk (1-damper ramp)	120-1338	¼ -20 x ½" Hex Head Cap Screw (2-griddle quads, 2-retainer lwr fireback/inner btm, 3- damper)
120-4212	¼ -20 x 1¼" Threaded Rod 2 Ends (2-stove top to sides)	30002844	Handle Bracket (1-front leg)
120-1745	¼ -20 x 1" Zinc Hex Head Leveller Bolt (4-one in each of the legs)	120-1779	7/16 Narrow Spacer (1-damper rod spacer)
120-2058	#10 x ½" Black Phillips Pan Head SMS (4-outer back to rear brackets, flue collar HS)	120-2470	Washer, ¼ Plain Flat ⅞" od (5-front/back/sides, to bottom, 6-front/back/top to sides, 2-andiron to front, 2-inner bottom to bottom, 2-front manifold to front, 4-side manifolds to sides, 1-primary air, 4-hinge strips on doors)
120-2471	Washer, ¼" Flat .294 id x .620 od SS (1-friction spring thermostat handle)	120-2473	Washer, ¼" Flat .266id x .629 od (4-damper housing outside of stove)
120-2474	Washer, ⅜" Flat Z (4-damper housing inside of stove, 5-top and bottom hinge, 1-between ash door and bottom hinge)	120-2560	Washer, ⅜" Narrow (1-damper rod to left end, front door handle)
120-2488	Washer, ⅜" Flat (3-legs to bottom)	120-3213	¼ -20 Hex Lock Nut (1-back insulation board to back)
120-2527	Washer, Fender ¼" (1-insulation board to back)	120-0881	¼ -20 x ⅝" Phillips Round Head Screw Blk (2-primary air valve system to bottom, 2-ashdoor hinge)
120-3210	¼ -20 Hex Nut Plain (4-damper housing to back, 2-top to sides, 2-damper ramp, 1-griddle handle)	120-1846	Friction Spring (1-thermostat handle)
120-3329	Nut, ¼ -20 Plain Square (2-flue collar to back)	30001749	Pin, Cotter (1-ashdoor hinge pin)
120-1899	5/16" Hole Plug (1-stove back)	120-2906	⅜ x ⅜ Pop Rivet (4-rating plate)
30002826	Ashdoor Pin Hinge (1-ashdoor)	30001794	¼ -20 x ⅝" Socket Head Cap Screw Blk (1-primary air cable to valve attachment)
120-4874	Oval Sleeve (2-primary air cable for loops)	120-0907	¼ -20 x 1" Black Phillips Round Head Screw (2-ash door heat shield taps)
63D0069	Spring Washer (1-ash door Hanlde, 1-frontdoor handle)	120-3290	⅜-16 Hex Head Jam Nut Top Lock (1-ashdoor handle)
120-0414	¼ -20 x 1¼" Cup Point Socket Set Screw (1-damper ramp adjuster)	160-1488	Tab, Damper (3-damper)
120-3157	⅜-16 Hex Head Jam Nut Plain (1-front door pawl)	120-1430	⅜ -16 X ¼" Zinc Hex Head Bolts Full Thrd (4-legs to bottom)
30001715	Glass Clip (2-left front door, 1-right front door)	420-0998	10-24 x ½" Phillips Truss Head Screw (4-glass clips rt. door, 4- glass clips left door)
30001716	Glass Clip (1-right front door)	120-5116	Allen Wrench, ⅜ Short Arm
120-1310	¼ -20 x 3" Zinc Slotted Pan Head Screw (1-damper handle, 1-fallaway handle)	120-5147	Allen Wrench, 5/32" Short Arm
120-1308	8-32 x 1" Phillips Pan Head Z (1-griddle handle)	120-1243	8-32 x 2" – Z Slot Round Head (1-primary air wood handle)
160-1396	Glass Clip (8-front doors)	30005364	10-24 x ⅜" Phillips Truss Head Screw (4-glass clips rt. door, 4- glass clips left door)