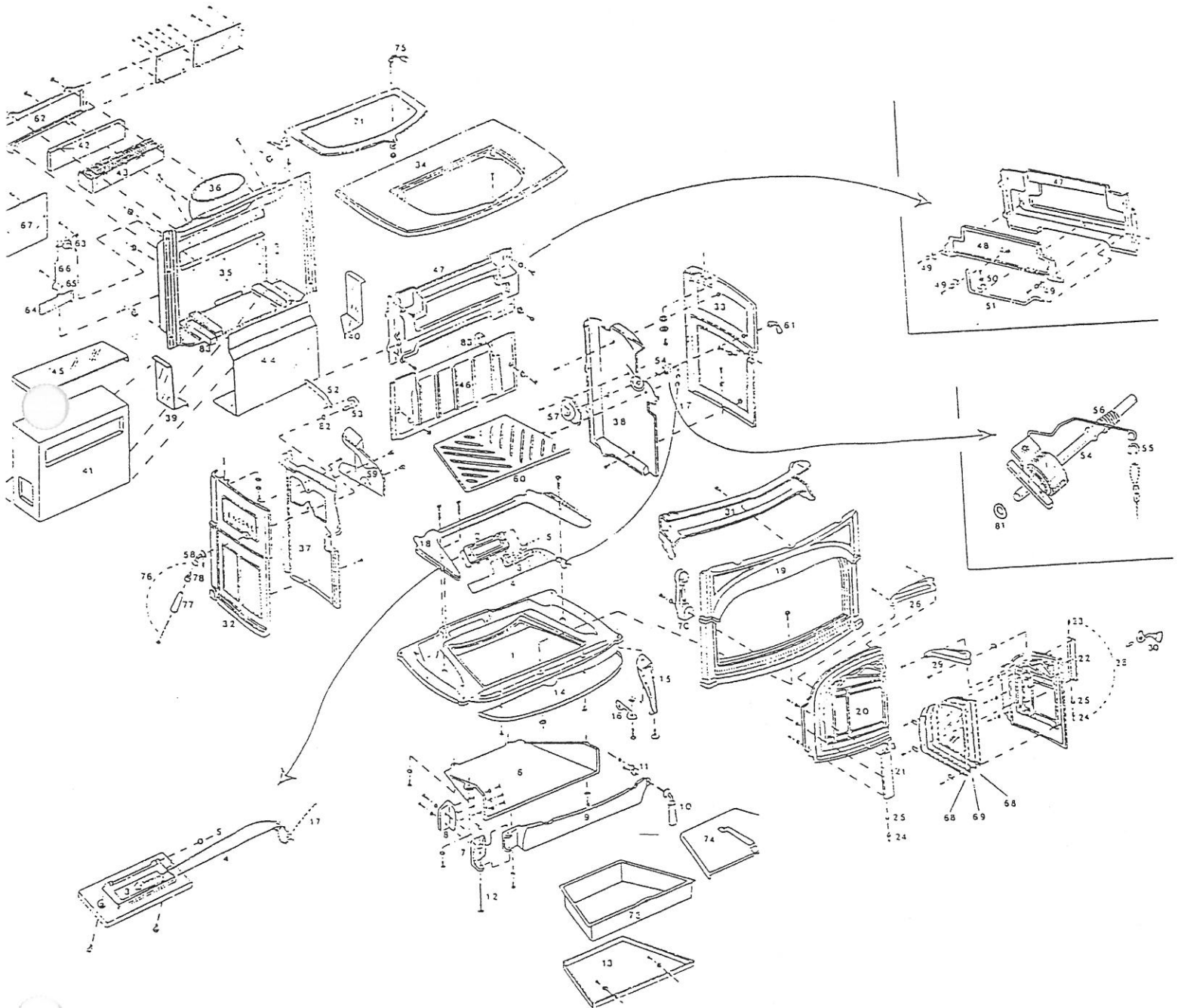




DEFIANT ENCORE MODEL #'S 0028 & 2140





Defiant Encore

MODEL # **0028 DEFIANT ENCORE**
2140 DEFIANT ENCORE

FEATURES: *MODEL #0028 MANUFACTURED 7/11/86 THROUGH 4/25/90*
IT HAS A GEISSER TESTING LAB. LABEL
MODEL # 2140 MANUFACTURED 5/17/90 THROUGH 11/5/91
IT HAS A WARNOCK HERSEY TESTING LAB. LABEL
CATALYST ACCESS IN THE BACK OF THE STOVE
DOUBLE PANE OF GLASS IN EACH DOOR

DIAGRAM #	ITEM #	PART DESCRIPTION
1	1307410	BOTTOM
2	1307411	PRIMARY AIR- FRAME ONLY
3	1307412	PRIMARY AIR- VALVE ONLY
4	1601493	PRIMARY AIR-ROD ONLY
5	1204020	PRIMARY AIR ROD CLIP
6	1307420	ASH DROP
7	1307435	ASH DOOR SPLIT HINGE
8	1307436	ASH DROP SPLIT HINGE
9	1307443	ASH DOOR
10	NA	<i>ASH DOOR HANDLE COMPLETE</i>
SUBSTITUTE	1600622 OR 1600663	
	1600622	ASH DOOR HANDLE- SHAFT ONLY
	1600663	ASH DOOR WOOD HANDLE ONLY
	1201310	ASH DOOR WOOD HANDLE- SCREW ONLY
11	0004384	PAWL ASSEMBLY COMPLETE
12	1203004	ASH DOOR HINGE PIN
	1203031	COTTER PIN
13	1601039	ASH PAN BRACKET
14	1307406	ASHLIP
15	1307427	LEG
16	1600600	DOOR HANDLE HOLDER
17	5005471	THERMOSTAT CABLE
18	1307418	PRIMARY AIR TUBE COVER PLATE
19	NA	<i>FRONT ONLY</i>
SUBSTITUTE	1308612	
20	NA	<i>LEFT DOOR ONLY</i>
SUBSTITUTE	1308613	<i>SINGLE GLASS DOOR</i>



22	1307402	LEFT DOOR HINGE
23	1600416	UPPER DOOR PIN
24	1600417	LOWER DOOR PIN
25	1201985	JUMP RING
26	1307403	LEFT DOOR MANIFOLD
27	NA	<i>RIGHT DOOR ONLY</i>
SUBSTITUTE	1308614	SINGLE GLASS DOOR
28	1307402	RIGHT DOOR HINGE
29	1307404	RIGHT DOOR MANIFOLD
30	NA	<i>FRONT HANDLE STUB COMPLETE</i>
SUBSTITUTE	5004225	
31	1307424	FRONT AIR MANIFOLD
32	NA	<i>LEFT END</i>
SUBSTITUTE	1308616	
33	NA	<i>RIGHT END</i>
SUBSTITUTE	1308619	
34	1307405	TOP
35	1307439	BACK
36	1304280	FLUE COLLAR
37	1307413	LEFT AIR/ WEAR PLATE
38	1307414	RIGHT AIR/ WEAR PLATE
39	1608629	LEFT DEFLECTOR
40	1608630	RIGHT DEFLECTOR
41	5004600	REFRACTORY ASSEMBLY (INCLUDES ACCESS PANEL)
42	1602503	REFRACTORY ACCESS PANEL ONLY
43	1602505	CATALYST BLOCK
44	1602506	HEAT EXCHANGER
45	1602507	REFRACTORY COVER (STEEL PIECE ON TOP)
46	1307416	LOWER FIREBACK
47	1307417	UPPER FIREBACK ONLY
47	5000335	UPPER FIREBACK AND DAMPER ASSEMBLY
48	1307421	DAMPER ONLY
49	1601488	DAMPER TAB
50	1601036	TORSION BAR CLIP
51	1601035	TORSION BAR
52	1601034	DAMPER ACTUATOR LINKAGE
53	1601033	DAMPER ACTUATOR ROD
54	5005470	THERMOSTAT COIL & ROD ASSEMBLY (CONTAINS CABLE W/ OVAL COPPER SLEEVES)
54	1201864	THERMOSTAT EYELET ONLY
55	1201985	JUMP RING
56	1201846	FRICTION SPRING
57	1307415	THERM ACCESS CUP
58	0004356	DAMPER HANDLE STUB WITH SET SCREW
	NA	<i>WOODEN DAMPER HANDLE AND SCREW</i>
SUBSTITUTE	1600664	
	1201310	DAMPER HANDLE- WOOD SCREW ONLY



	1600664	DAMPER HANDLE- WOODEN PART ONLY
	1600650	THREADED DAMPER HANDLE LIFTER ONLY
59	1307423	DAMPER LINK ACCESS PANEL
60	1307434	BOTTOM GRATE
61	NA	<i>THERMOSTAT HANDLE COMPLETE</i>
SUBSTITUTE	5004224	
	1600660	THERMOSTAT HANDLE- WOOD KNOB ONLY
	5004264	THERMOSTAT HANDLE- STUB WITH SET SCREW
	1201243	THERMOSTAT HANDLE - SCREW ONLY
62	1307442	CATALYST ACCESS PANEL
63	1601489	SECONDARY AIR PROBE
64	1601490	SECONDARY AIR FLAP
65	1201986	SECONDARY SHIM RING
66	1601486	SECONDARY AIR LINK
67	1601492	SECONDARY AIR COVER PLATE
68	1401115	GLASS (1)
69	5002798	GLASS GASKET WITH WIRE
	1203537	3M GASKET-9" (UNDER THE GLASS)
	1601396	GLASS CLIP LONG (3 USED PER DOOR)
	1601394	GLASS CLIP SHORT (1 USED PER DOOR)
70	1307419	ANDIRON
71	1300797	GRIDDLE (NO QUADS)
72	0004444	QUAD (1)
	5005746	ASH PAN & COVER ASSEMBLY
73	1601025	ASHPAN ONLY
74	1601027	ASH PAN COVER WITH HANDLE
75	0004357	GRIDDLE HANDLE COMPLETE
	1600658	GRIDDLE HANDLE- STUB ONLY
	1600661	GRIDDLE HANDLE- WOOD KNOB ONLY
	1201900	GRIDDLE HANDLE- BUSHING ONLY (2 USED)
	1201308	GRIDDLE HANDLE- WOOD HANDLE SCREW ONLY
	1203210	GRIDDLE HANDLE- WOOD HANDLE NUT ONLY
76	0004342	CERAMIC HANDLE COMPLETE
	1201294	CERAMIC HANDLE- SCREW ONLY
77	1600620	CERAMIC HANDLE-CERAMIC PART ONLY
78	1600650	THREADED CERAMIC HANDLE LIFTER ONLY
79	2000913	MANUAL
80	0000127	SPARKSCREEN
81	1202471	FLAT WASHER 1/4" S.S.
82	1202560	FLAT WASHER, 3/8" NARROW
83	1206115	KAOWOOL 3/4 X 7" (4 USED)
	1205116	1/8 ALLEN WRENCH
	1205147	5/32 ALLEN WRENCH



ENAMEL PARTS

***PREFIX FOR ENAMEL PARTS**

- 131 RED**
- 132 SAND**
- 133 BLUE**
- 134 MIDNIGHT**

THESE COLORS ARE NO
LONGER AVAILABLE

- ~~736 GRAY~~
- ~~138 ANTIQUE GRAY~~
- ~~139 ANTIQUE BROWN~~

- SUBSTITUTE** * 7400 LEFT DOOR
- * 8613
- SUBSTITUTE** * 7401 RIGHT DOOR
- * 8614
- * 7402 DOOR HINGE BOSS
- * 7405 TOP
- * 7407 FRONT
- SUBSTITUTE** * 8612
- * 7408 LEFT END (NOT AVAILABLE IN BLUE)
- SUBSTITUTE**
(FOR BLUE) 1600664
- NA RIGHT END
- SUBSTITUTE** * 8619 FOR ALL, BUT BLUE. (SUBSTITUTE * 8617 FOR BLUE)
- * 7439 BACK

HARDWARE

- 1200896 1/4 - 20 X 5/8 PH RD HD MACH SC
(PRIMARY AIR, CAT ACCESS PANEL)
- 1201374 1/4 - 20 X 3/4" HEX HD CAP SC
(ASH DROP, HINGES, SIDES, BACK, FIREBACKS)
- 1202474 FLAT WASHER 1/4" STUD
(HINGES ASH DROP, DOOR, SIDES,
BACK, DOORS, ASH DOOR BRACK, FB'S)
- 1200417 1/4 - 20 X 1/4 KNRL SOCKET SET SCREW
(ASH DOOR, PAWL, THERM HANDLE)
- 1203210 1/4 - 20 PLAIN HEX NUT
(ASH DOOR, PAWL, FRONT TO BOTTOM)



1203290	3/8-16 HEX TOP LOCK JAM NUT <i>(ASH DOOR, PAWL)</i>
1201338	1/4 - 20 X 1/2" HEX HD CAP SC <i>(ASH PAN BRKT, THERM ACCESS CUP, GRIDDLE)</i>
1200482	1/4 - 20 X 1/2" SOC FL HD MACH SC <i>(ASH LIP, DAMPER LINK ACCESS PANEL)</i>
1201322	10 - 24 X 1/2 HEX HD CAP SC <i>(ASH DROP BOTTOM HEAT SHIELD HOLES)</i>
1202488	FLAT WASHER 3/8" STUD <i>(LEG)</i>
1208610	3/8-16 X 1 1/4 SOCKET HEAD ALLEN BOLT <i>(LEG)</i>
1201443	3/8- 16 X 1 1/4 HEX HEAD BOLT <i>(LEG BOLTS)</i>
1201745	1/4- 20 X 1 HEX HEAD LEVELER BOLT <i>(LEG LEVELER)</i>
1200848	1/4- 20 X 2 PHILLIPS FLAT HD. MACH <i>(PRIMARY AIR COVER PLATE)</i>
1201347	1/4-20 X 1/2 HEX HEAD LEVELER BOLT <i>(DOOR)</i>
1203031	HAIRPIN COTTER .080 X 1- 3/16 #13 <i>(ASH DOOR)</i>
1200991	10- 20 X 1 PHILLIPS PAN HD MACH <i>(DOOR MANIFOLD)</i>
1202560	FLAT WASHER, 3/8" NARROW <i>(DAMPER ROD)</i>
1200334	7/16- 20 X 1 SOCKET SET SCREW <i>(DOOR INSERT FOR THE HANDLE)</i>



1201392	1/4- 20 X 2 HEX HEAD CAP SCREW <i>(FRONT AIR MANIFOLD)</i>
1201376	1/4- 20 X 1 HEX HEAD CAP SCREW <i>(END WEAR PLATES TO FIREBACKS)</i>
1201326	1/4-20 X 1 HEX HEAD CAP SCREW <i>(FRONT TO BOTTOM)</i>
1200881	1/4 - 20 X 3/4 PH FL HD MACH SC <i>(TOP TO FRONT)</i>
1202473	FLAT WASHER 1/4" BLACK OX <i>(BACK)</i>
1200907	1/4- 20 X 1 PHILLIPS RND HD MACH SC <i>(FLUE COLLAR)</i>
1201338	1/4-20 X 1/2 HEX HEAD CAP SCREW <i>(DAMPER TO UPPER FIREBACK, QUAD TORSION BAR CLIP, DAMPER TAB)</i>
1202471	FLAT WASHER 1/4" S.S. <i>(THERMOSTAT AND ANDIRON)</i>
1200563	5/16- 18 X 5/16 SOCKET SET SCREW <i>(DAMPER HANDLE)</i>
1201243	8- 32 X 2 SLOT. RND HD MACH SCREW <i>(THERM HANDLE)</i>
1201771	#6 X 1/4 RHD HD DRV SCREW <i>(SERIAL # PLATE)</i>
1201986	SHIM RING <i>(SECONDARY AIR FLAP)</i>
1200980	10- 24 X 1/4 PHILLIPS PAN HD MACH SC <i>(SECONDARY PROBE)</i>



1201316	10-24 X 3/8 SHOULDER BOLT <i>(SECONDARY AIR FLAP)</i>
1200993	1/4- 20 X 3/8 PHILLIPS PAN HD MACH SC <i>(SECONDARY AIR COVER PLATE)</i>
1201338	1/4- 20 X 1/2 SS HEX HEAD CAP SCREW <i>(ANDIRON)</i>
1202058	#10 X 1/2 PHILLIPS PAN HD SM SCREW <i>(STOVE BAG)</i>
1201308	8-32 X 1 SLOT PAN HD MACH SCREW <i>(GRIDDLE HANDLE)</i>
1203251	HEX NUT 10 - 24 PLAIN <i>(GRIDDLE HANDLE)</i>
1202423	WASHER SAE #10 <i>(GRIDDLE HANDLE)</i>
1201310	1/4- 20 X 3 SLOT PAN HD MACH SCREW <i>(DAMPER HANDLE)</i>
1201294	1/4- 20 X 3 3/8 SLOT OVAL HD MACH SC <i>(FRONT HANDLE)</i>
1204867	CONTROL CABLE 1/32" S.S. <i>(THERMOSTAT)</i>
1204874	OVAL COPPER SLEEVE 1/32" <i>(THERMOSTAT)</i>
1601396	GLASS CLIP .049 S.S. 1/2 X 3/4 <i>(GLASS)</i>



GASKETS

BELOW IS A LIST OF THE TYPE OF GASKET AND THE LENGTH NEEDED ON THE ENCORE

LOCATION	GASKET SIZE	QUANTITY NEEDED	PART NUMBER
GLASS	FORMED GASKET (1 EACH DOOR)	1	1203516
BOT OF GLASS	3M INTERAM	9"	1203537
GRIDDLE	5/16" ARMASEAL	4'	1203668
LEFT DOOR	5/16" FIBERGLASS/6 NDLE MED DENS	4'	1203588
RIGHT DOOR	5/16 FIBERGLASS/6 NDLE MED DENS	3'	1203588
ASH DROP / BOTTOM	5/16 FIBERGLASS/6 NDLE MED DENS	4'	1203588
ASH DOOR	3/8" FIBERGLASS/ 6 NDLE MED DENS	3.5'	1203589
LWR FB	5/16" FIBERGLASS/6 NDLE MED DENS	1.4'	1203588
WEARPLATE & UPFB	5/16" FIBERGLASS/6 NDLE MED DENS	4'	1203588
DAMPER	5/16" FIBERGLASS/6 NDLE MED DENS	3'	1203588
CAT ACC. PAN	5/16" FIBERGLASS/6 NDLE MED DENS	3.5'	1203588
BACK	5/16" FIBERGLASS/6 NDLE MED DENS	5'	1203588
FLUE COLLAR	1/4" FIBERGLASS / 3 NDLE MED DENSE	3'	1203591
LWR FIREBACK REFRACTORY	KAOWOOL 3/4 X 1 X 7"	6	1206115

REPAIR KITS

0005925

FIREBACK KIT FOR MODEL #2190

INCLUDES: UPPER FIREBACK ASSEMBLY, LOWER FIREBACK REFRACTORY, HEAT EXCHANGER, SECONDARY PROBE, GASKET, CEMENT, BOLTS, & INSTRUCTIONS

DEFIANT ENCORE ACCESSORIES

SAME AS MODEL #2550