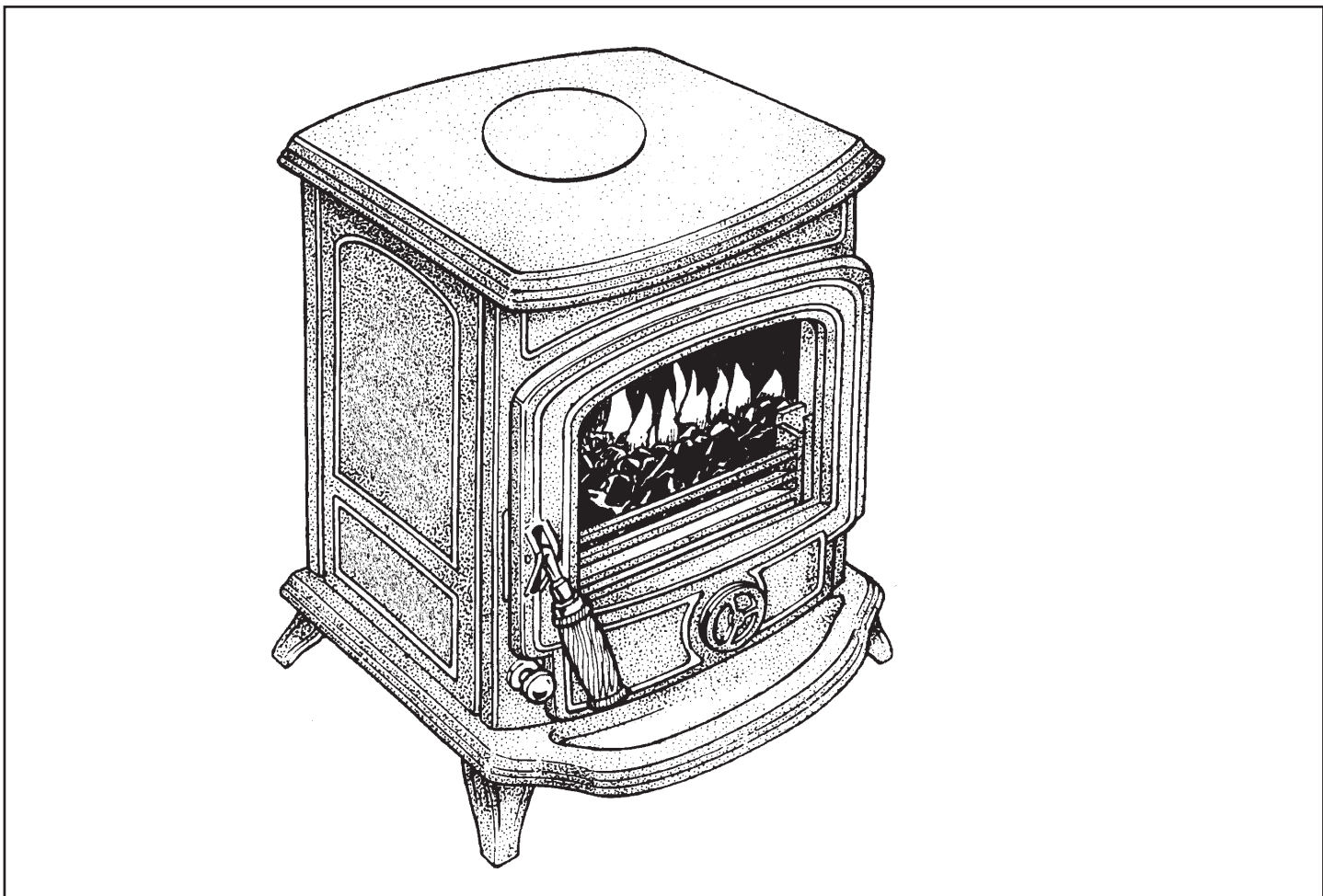


---

PLEASE RETAIN



# Oisin Solid Fuel Stove



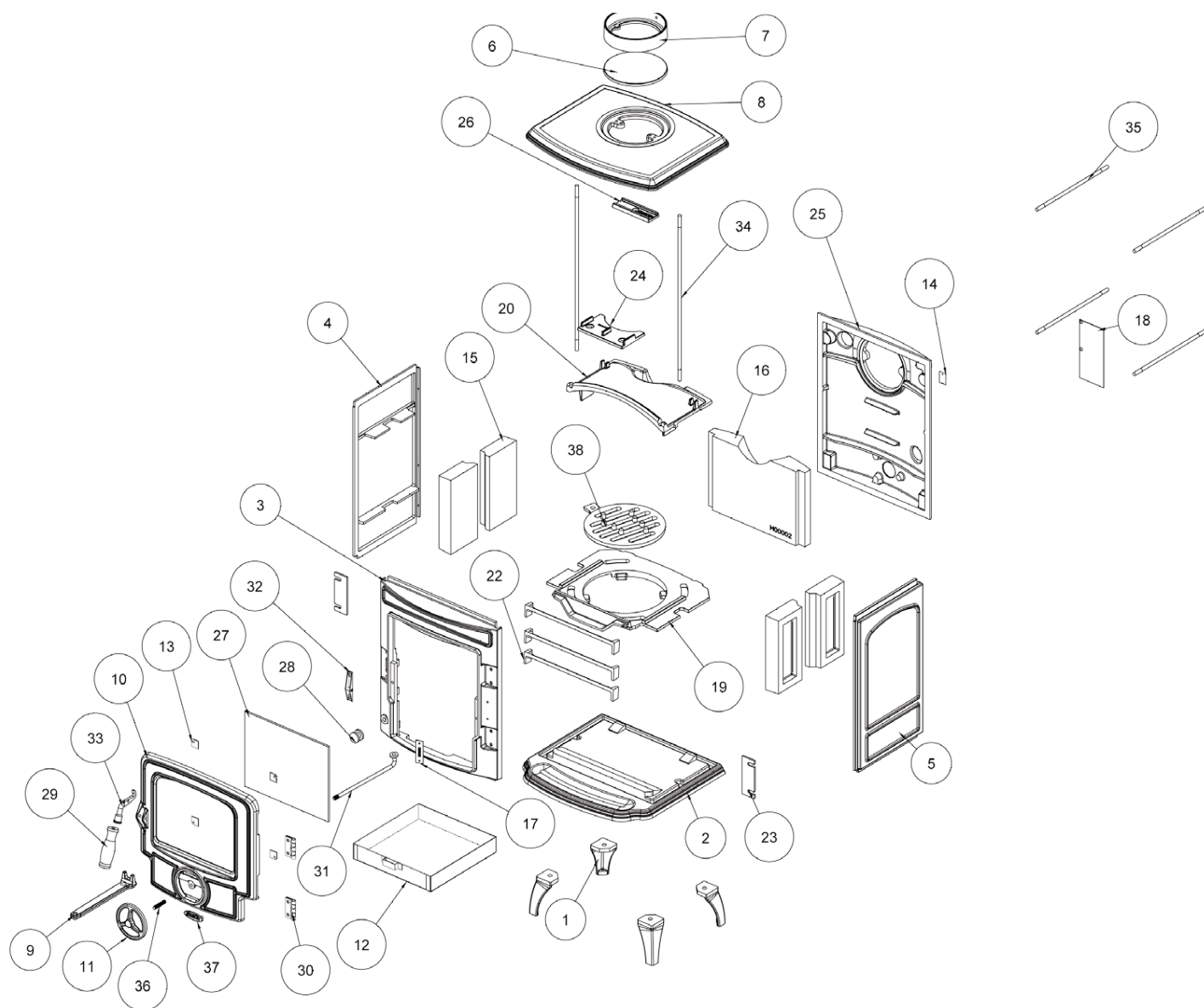
This appliance is hot while in operation and retains its heat for a long period of time after use. Children, aged or infirm persons should be supervised at all times and should not be allowed to touch the hot working surfaces while in use or until the appliance has thoroughly cooled.

*When using the boiler stove in situations where children, aged and/or infirm persons are present a fireguard must be used to prevent accidental contact with the stove. The fireguard should be manufactured in accordance with BS 8423:2010.*

**INSTALLATION AND OPERATING INSTRUCTIONS**

---

## OISIN SF NB EXPLODED VIEW



- |                                             |                                             |
|---------------------------------------------|---------------------------------------------|
| 1. LEG (SHORT) - <b>B00001AXX</b>           | 24. HOB PROTECTION PLATE - <b>Q00007AXX</b> |
| 2. BASE - <b>B00002AXX</b>                  | 25. BACK PANEL - <b>Q00576CXX</b>           |
| 3. FRONT FRAME - <b>B00003BXX</b>           | 26. BRACE PLATE - <b>Q00759AXX</b>          |
| 4. LH SIDE PLATE - <b>B00004CXX</b>         | 27. GLASS WINDOW - <b>T00001AXX</b>         |
| 5. RH SIDE PLATE - <b>B00005CXX</b>         | 28. PULL ROD KNOB - <b>U00001AXX</b>        |
| 6. HOB BLANKING PLATE - <b>B00006AXX</b>    | 29. DOOR HANDLE (LONG) - <b>U00009AXX</b>   |
| 7. FLUE SPIGOT - <b>B00007BXX</b>           | 30. HINGE - <b>U00153AXX</b>                |
| 8. HOB - <b>B00008BXX</b>                   | 31. GRATE CONNECTING ROD - <b>V00001AXX</b> |
| 9. OPERATING TOOL - <b>B00009DXX</b>        | 32. DOOR CATCH - <b>V00002AXX</b>           |
| 10. FRONT DOOR - <b>B00010HXX</b>           | 33. DOOR LATCH - <b>V00003BXX</b>           |
| 11. SPIN VALVE - <b>B00012AXX</b>           | 34. LONG TIE BOLT - <b>V00052AXX</b>        |
| 12. ASHPAN - <b>F00001AXX</b>               | 35. TIE ROD (M8 * 260MM) - <b>V00053AXX</b> |
| 13. DOOR GLASS CLIP - <b>F00003AXX</b>      | 36. M8*39 SPINDLE - <b>V00703BXX</b>        |
| 14. RATING PLATE BRACKET - <b>V01072AXX</b> | 37. BADGE - <b>V00730BXX</b>                |
| 15. SIDE BRICK - <b>H00001AXX</b>           | 38. GRATE - <b>Z00025BXX</b>                |
| 16. BACK BRICK - <b>H00002AXX</b>           |                                             |
| 17. SERIAL NUMBER PLATE - <b>N00234BXX</b>  |                                             |
| 18. DATA PLAQUE - <b>N00440AXX</b>          |                                             |
| 19. GRATE SUPPORT PLATE - <b>Q00001BXX</b>  |                                             |
| 20. TOP BAFFLE - <b>Q00003AXX</b>           |                                             |
| 22. FIRE FENCE - <b>Q00005AXX</b>           |                                             |
| 23. FIRE FENCE RETAINER - <b>Q00006AXX</b>  |                                             |