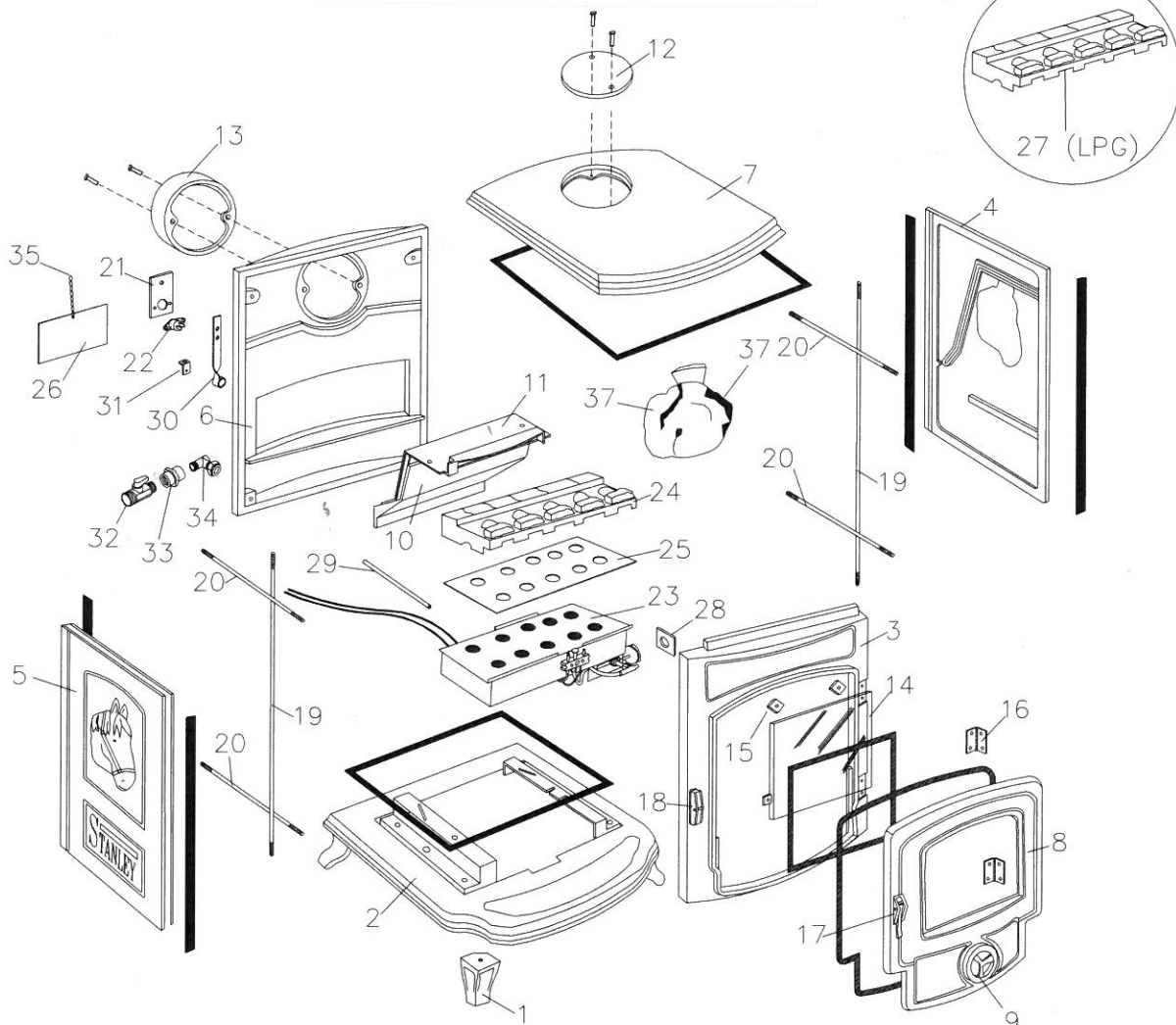


Oisin & Shire Gas Mk2



PARTS LIST

- | | | |
|---|--|---|
| <ul style="list-style-type: none"> 1 LEG - 16020.11 2 BASE - 16050.11 3 FRONT FRAME - 16055.11 4 RIGHTHAND SIDE PANEL - 16054.11 5 LEFTHAND SIDE PANEL - 16053.11 6 BACK PANEL - 16051.10 7 HOB - 16001.11 8 FRONT DOOR - 16003.11 9 SPIN VALVE - 16010.11 10 FRONT BAFFLE - 16045.10 11 BACK BAFFLE - 16044.10 12 FLUE BLANKING PLATE - 16028.11 | <ul style="list-style-type: none"> 13 FLUE SPIGOT (PIPE) 16064.11 14 WINDOW GLASS - 16025.20 15 WINDOW CLIP - 13047.20 16 HINGE - 014061.20 17 DOOR LATCH - 18028.20 18 DOOR CATCH - 16015.20 19 VERTICAL TIE BAR - 16018.20 20 HORIZONTAL TIE BAR - 16017.20 21 VENT SWITCH BRACKET - 16017.20 22 VENT SWITCH - 16070.20 23 BURNER ASSEMBLY - 16071.20 24 CERAMIC MATRIX (N.G) - 16048.20 | <ul style="list-style-type: none"> 25 BURNER GASKET 26 INSTRUCTION PLATE - 16049.20 27 CERAMIC MATRIX(L.P.C) - 16047.20 28 CONTROL PLATE - 16057.20 29 MAINS INLET PIPE - 16068.20 30 MAINS INLET BRACKET - 16056.20 31 INSTRUCTION PLATE BRACKET 32 SHUT OFF VALVE 33 BRASS COUPLING 34 T CONNECTOR 35 CHAIN 36 FLUE SPIGOT FLEXI (OPTIONAL) - 16067.11 37 BAG OF COALS |
|---|--|---|

LABELS AND PACKAGING

- | | | | | |
|--------------------------|---|----------------|----------------------|-----------------|
| CARTON - 16050.20 | PROTECTION BLOCK - 16058.20 | PACKING SLIP | PACKING FOAM (FRONT) | AEROBOARD (TOP) |
| TIMBER PALLET - 16033.20 | INSTALLATION AND OPERATING INSTRUCTIONS | SAFETY LEAFLET | AEROBOARD (SIDES) | |

FIXINGS SEALINGS AND ROPES

- | | |
|--|--|
| <ul style="list-style-type: none"> 4 x M8 x 20mm HEX. HD. BOLT S/C Fixing Legs to Base 4 x 10mm FLAT WASHER S/C Fixing Legs to Base 4 x M8 HEX NUT CHROME PLT. Clamping Horizontal & Vertical Tie Bars 6 x #20 OD x #10 ID x 2mm FLAT WASHER CHROME PLT. Clamping Horizontal & Vertical Tie Bars 4 x 1/4" BSW x 1/4" CSK. HD. SCREW CHROME PLT. Fixing Door Hinges 4 x 1/4" BSW x 11/32" CSK. HD. SCREW CHROME PLT. Fixing Door Hinges 2 x 1/4" BSW x 1/4" CSK. HD. SCREW CHROME PLT. Fixing Door Catch 6 x 1/4" FLAT WASHER CHROME PLT. Fixing Door Catch 1 x TENSION PIN #6 x 20mm Fixing Door Latch 1 x M8 x 30mm HEX. HD. BOLT S/C Fixing Spin Valve to Front Door 1 x M8 HEX NUT Fixing Spin Valve to Front Door 4 x 3/16" BSW x 1/4" CSK. HD. SCREW CHROME PLT. Fixing Window Clip 4 x 1/4" BSW x 1/2" CSK. HD. SCREW CHROME PLT. Fixing Flue Spigot & Blanking Plate 2 x M3 x 10mm PAN HD. SCREW CHROME PLT. Fixing Vent Switch 1 x 3/16" BSW x 1/2" RD HD ZINC PLATED Instruction Plate to Back | <ul style="list-style-type: none"> 1 x 1/4" BSW x 11/32" PAN HD. SCREW CHROME PLT Fixing Vent Switch Bracket 2 x 1/4" BSW x 11/32" PAN HD. SCREW CHROME PLT Fixing Gas Pipe Bracket 2 x M6 WING NUTS S/C Fixing Burner 2 x 6mm FLAT WASHER S/C Fixing Burner 2 x #9 x XL POP RIVET Fixing Chain to Instruction Plate 900mm x 12mm x 3mm WHITE ADHESIVE BACKED TAPE For Sealing Window Glass 4100mm x 12mm x 3mm WHITE ADHESIVE BACKED TAPE For Sealing Costings Assembly 1500mm x ROPE BLACK DIA.12mm For Sealing Front Door 2 x M3 HEX NUT CHROME PLT. Fixing Vent Switch 500mm x 12mm x 3mm WHITE ADHESIVE BACKED TAPE Flue Spigot 500mm x 12mm x 3mm WHITE ADHESIVE BACKED TAPE Blanking Plate 4 x 1/4" BSW x 3/4" HEX HD. ZINC PLATED Levelling Screws (Legs) 4 x 1/4" BSW x 3/4" HEX HD. ZINC PLATED Front / Back Baffle to Back 4 x #20 OD x #10 ID x 2mm WASHER CHROME PLATED Front / Back Baffle to Back 1 x 1/4" BSW x 3/4" RD HD ZINC PLATED Locking Door Latch |
|--|--|