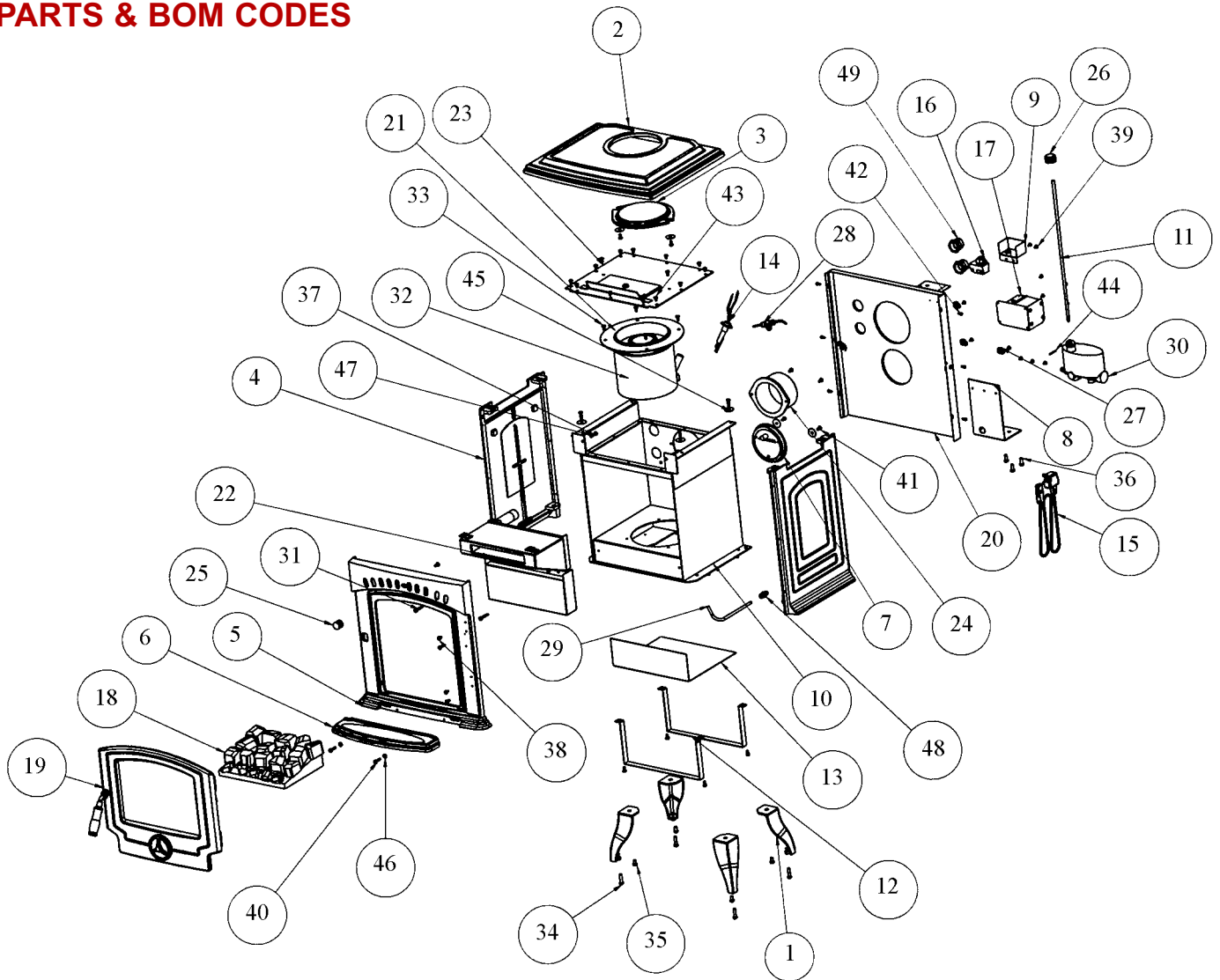


TARA OIL DHW EXP VIEW C/W PARTS & BOM CODES



- | | | | |
|-----|---|-----|---|
| 1. | Leg - B00077AXX | 31. | 1/4" x 1 1/2" Hex Hd - Consumable |
| 2. | Hob - B00209AXX | 32. | 1/4" x 7/8" Hex Hd - Consumable |
| 3. | Hob Blanking Plate - B00210AXX | 33. | 1/4" x 1/2" Hex Hd - Consumable |
| 4. | Side Panel - B00211AXX | 34. | M8 x 30 Hex Hd - Consumable |
| 5. | Front Panel - B00251GXX | 35. | M8 x 14 Hex Hd - Consumable |
| 6. | Ashtray Front - B00259AXX | 36. | M8 20 Hex Hd - Consumable |
| 7. | 5" Draft Regulator - F00553AXX | 37. | Screw CSK S/C 1/4" x 3/4" - Consumable |
| 8. | Valve Support Bracket - F00590BXX | 38. | Screw CSK Z/P 1/4" x 1/2" - Consumable |
| 9. | Cable Protection Box - F00593BXX | 39. | Self Tapper Bronze No.10 x M1/2" - Consumable |
| 10. | Combustion Chamber - F00596CXX | 40. | Screw Rd Hd 1/4" x 1" - Consumable |
| 11. | Valve Control Rod - F00603BXX | 41. | Screw CSK Z/P 1/4" x 1/2" - Consumable |
| 12. | Bottom Heat Shield Bracket - F00667AXX | 42. | Screw Rd Hd 3/16" x 1/2" - Consumable |
| 13. | Bottom Heat Shield - F00668AXX | 43. | Screw Rd Hd 1/4" x 3/8" - Consumable |
| 14. | Ignition Probe C/W Leads - G00206AXX | 44. | Pin Split 1/8" x 1" - Consumable |
| 15. | Mains Lead - G00207AXX | 45. | Washer Flat Mudguard 30 x 8 x 12 - Consumable |
| 16. | Counter Timer with Knob - G00208AXX | 46. | Washer Flat 1/4" - Consumable |
| 17. | Transformer C/W Leads & Bracket - G00209BXX | 47. | Washer Shakeproof External 1/4" - Consumable |
| 18. | Ceramic Coal Matrix - H00156AXX | 48. | Fitting Straight 1/4" BSP x 8mm - W00906AXX |
| 19. | Door Assembly - L00123AEN | 49. | 1" Adaptor - W00968AXX |
| 20. | Heat Shield Assembly - L00278HXX | | |
| 21. | 8" Burner Pot C/W Support Plate - L00317BXX | | |
| 22. | Tara Boiler Assembly - L00348BXX | | |
| 23. | Top Plate Assembly - L00351BXX | | |
| 24. | Flue Outlet 125 Diameter - Q00660AXX | | |
| 25. | Air Wash Knob - U00077AXX | | |
| 26. | Control Knob - U00086AXX | | |
| 27. | P-Clip (RS 543-361) - V00111AXX | | |
| 28. | Scrubber - V00473AXX | | |
| 29. | Pipe Dia 8mm - V00476BXX | | |
| 30. | Oil Valve - V00481AXX | | |