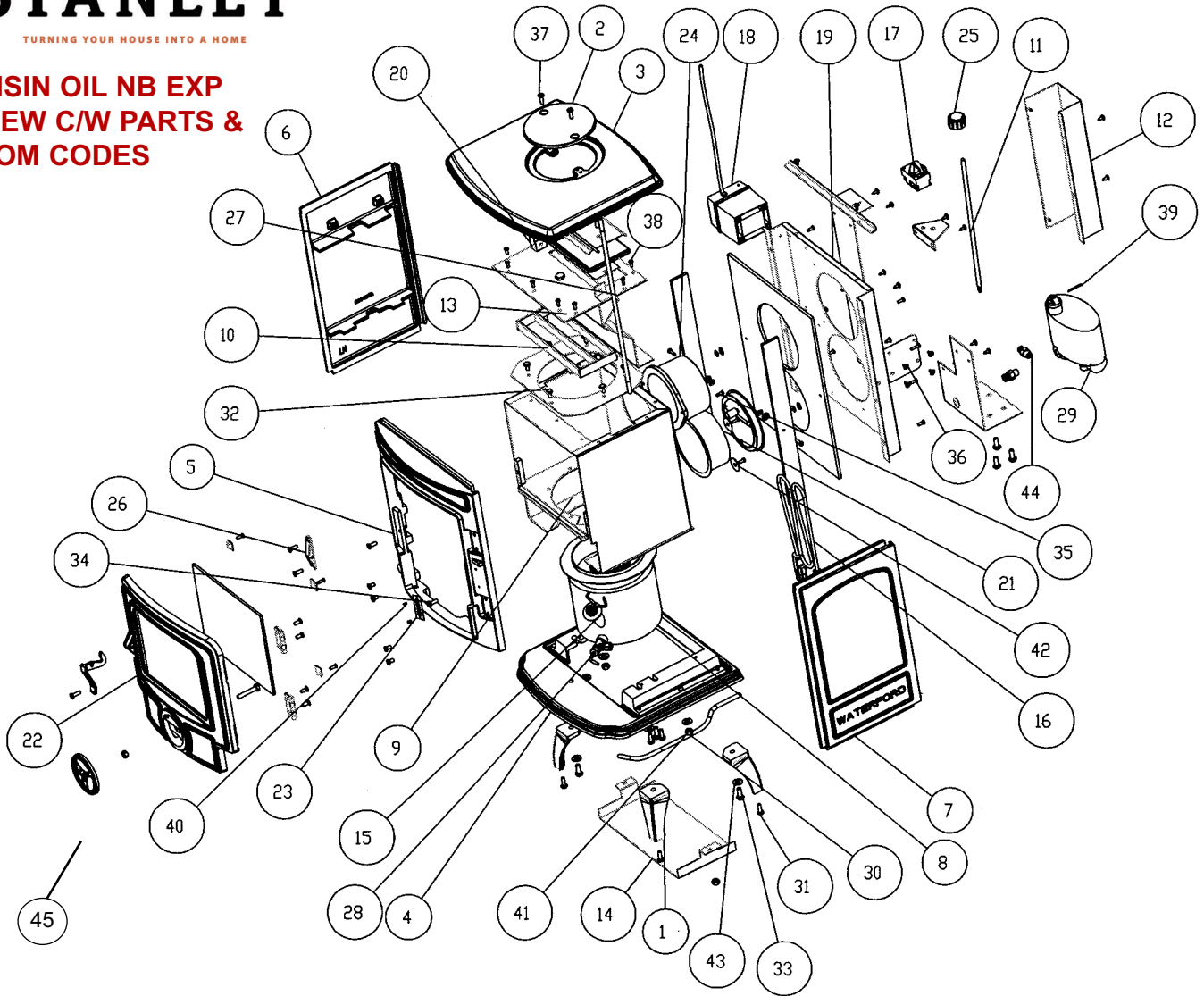


# STANLEY

TURNING YOUR HOUSE INTO A HOME

## OISIN OIL NB EXP VIEW C/W PARTS & BOM CODES



- |  |   |   |
|--|---|---|
| 1. LEG (SHORT) - B00001AXX                         | 22. DOOR ASSEMBLY - L00331AXX                   | 41. NUT HEX M8 - Consumable                       |
| 2. HOB BLANKING PLATE - B00006AXX                  | 23. SERIAL NUMBER PLATE - N00234AXX             | 42. WASHER FLAT MUDGUARD 30 X 8 X 12 - Consumable |
| 3. HOB - B00008AXX                                 | 24. FLUE OUTLET 125mm Dia - Q00660AXX           | 43. WASHER FLAT 20 X 10 X 2 - Consumable          |
| 4. BASE - B00214BXX                                | 25. CONTROL KNOB - U00086AXX                    | 44. FITTING STRAIGHT 1/4" BSP X 8mm - W00906AXX   |
| 5. FRONT FRAME - B00405EXX                         | 26. DOOR CATCH - V00002AXX                      | 45. DOOR GLASS - T00001AXX                        |
| 6. LH SIDE PANEL - B00004BXX                       | 27. LONG TIE BOLT - V00052AXX                   | 46. FIRE DOOR - B00108BXX                         |
| 7. RH SIDE PANEL - B00005BXX                       | 28. SCRUBBER - V00473AXX                        | 47. SPIN VALVE - B00012AXX                        |
| 8. BURNER SYSTEM - D00030AXX                       | 29. OIL VALVE - V00482AXX                       | 48. GLASS CLIPS - F00003AXX                       |
| 9. COMBUSTION CHAMBER - F00607CXX                  | 30. PIPE 8mm Dia - V00477BXX                    | 49. HINGES 2" - U0010AXX                          |
| 10. 6" BURNER SUPPORT PLATE - F00608AXX            | 31. 1/4" X 3/4" HEX HD - Consumable             | 50. DOOR CATCH - U00044AXX                        |
| 11. VALVE CONTROL ROD - F00613AXX                  | 32. 1/4" X 1/2" HEX HD - Consumable             |   |
| 12. CABLE PROTECTION BOX - F00593BXX               | 33. M8 X 20 HEX HD - Consumable                 |   |
| 13. COAL SUPPORT FRAME - F00641AXX                 | 34. SCREW CSK S/C 1/4" X 3/4" - Consumable      |   |
| 14. BOTTOM HEAT SHIELD - F00669AXX                 | 35. SCREW CSK Z/P 3/16" X 3/8" - Consumable     |   |
| 15. IGNITION PROBE C/W LEADS - G00206AXX           | 36. SELF-TAPPER BRONZE NO10 X 1/2" - Consumable |   |
| 16. MAINS LEAD - G00207AXX                         | 37. SCREW RD HD 1/4" X 3/4" - Consumable        |   |
| 17. COUNTER TIMER WITH KNOB - G00208AXX            | 38. SCREW RD HD 3/16" X 1/2" - Consumable       |   |
| 18. TRANSFORMER BOX - G00209AXX                    | 39. SPLIT PIN 1/8" X 1" - Consumable            |   |
| 19. HEAT SHIELD ASSEMBLY - L00279FXX               | 40. RIVET SELF DRIVE A4 - Consumable            |   |
| 20. FLUE BAFFLE ASSEMBLY - L00284CXX               |   |   |
| 21. 5" DRAUGHT REGULATOR & COLLAR ASSY - L00316AXX |   |   |

**Waterford Stanley Ltd.,**  
Bilberry, Waterford, Ireland.  
Tel: 051-302302  
Fax: 051-302315

**STANLEY**  
TURNING YOUR HOUSE INTO A HOME