

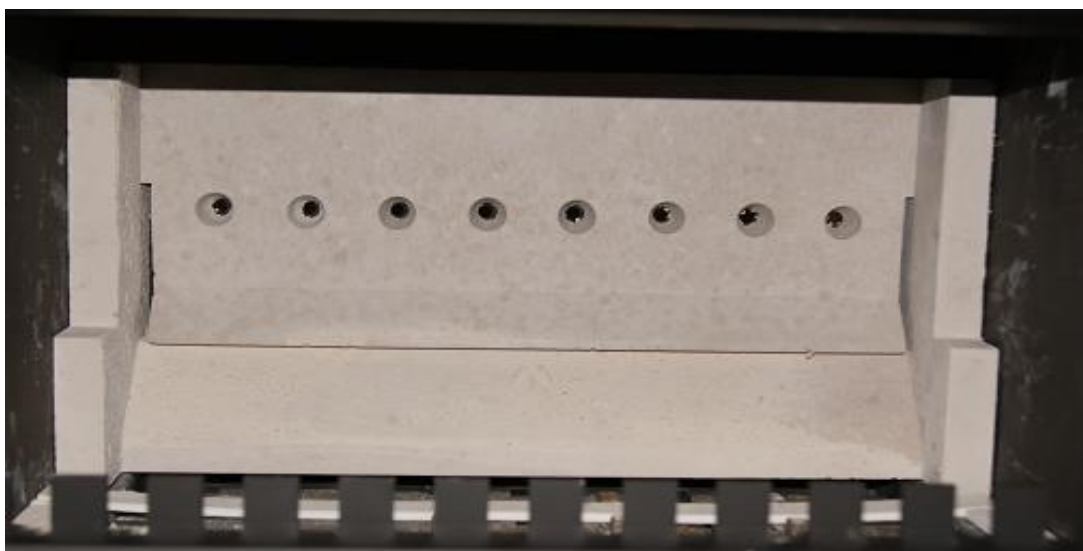
DB 15 Brick Locations



1, Fit the rear base brick



2, Locate rear brick on top of base .



3, Now position rear side bricks.

DB 15 Brick Locations



4. Locate mid brick as shown, on protruding section of rear side bricks, followed by the two upper baffle bricks.



5. Finally fit left and right hand front side bricks.

**NOTE: IT IS IMPORTANT TO ENSURE A LENGTH OF CERAMIC GASKET IS
CORRECTLY LOCATED BETWEEN EACH BRICK**