

▫ Insufficient fuel.

- Check that the de-scaler, the regulator filter and burner pot are cleaned.

▫ The draft regulator is blocked in open position

- Unlock the draft regulator.
- Check the regulator adjustment (p. 17) and refit, if necessary.

Coke build up noticed.

▫ Excessive air supply.

- Adjust draft.

4. Spare parts

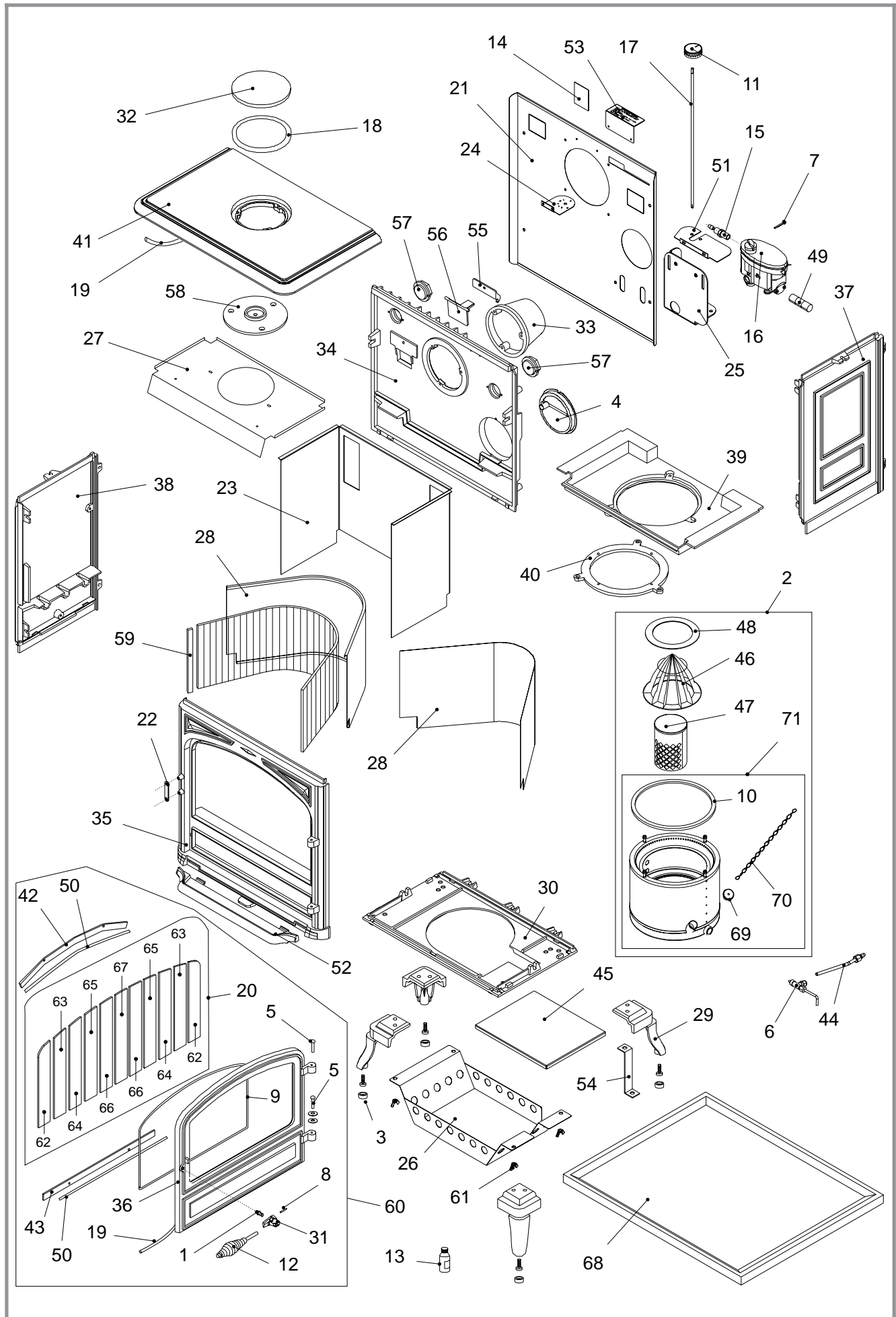
For any order of spare parts, please indicate : model number, code of the colour, description of the part, code number and colour index of the part.

A = 174 10 25 Y B = 174 10 31 Y

C = 174 10 31 L D = 174 10 31 K

Example : Burgundy **174 10 25 Y**, top plate **352124 76**.

N°	Code	Description	Type	A	B	C	D	Qty
1	100956	Axle		A	B	C	D	01
2	905324	Complet burner	C5	A	B	C	D	01
3	109552	Cap		A	B	C	D	04
4	110105	Barometric damper		A	B	C	D	01
5	110405	Hinge pin	6x35	A	B	C	D	02
6	119211	Descaler		A				01
6	119213	Descaler			B	C	D	01
7	134601	Pin	2x20	A	B	C	D	02
8	134749	Pin	4x20	A	B	C	D	01
9	142301	Adhesive rope		A	B	C	D	1,32 m
10	142412	Gasket		A	B	C	D	01
11	149868	Knob		A	B	C	D	01
12	158541	Handle		A	B	C	D	01
13	161025	Touch-up paint	(L)			C		01
13	161026	Touch-up paint	(K)				D	01
14	162356	Descriptive plate		A				01
14	162430	Descriptive plate			B		D	01
15	164205	Oil-tight nut		A	B	C	D	02
16	165124	Float regulator		A				01
16	165139	Float regulator			B	C	D	01
17	179605	Regulator shaft		A	B	C	D	01
18	181604	Ceramic rope	10x4	A	B	C	D	1 m
19	181615	Ceramic rope	Ø 12	A	B	C	D	3,16 m
20	188791	Refractory glass	11 Part.	A	B	C	D	01
21	205386	Back panel		A	B	C	D	01
22	221200 66	Striking plate		A	B	C	D	01
23	222536	Flue baffle		A	B	C	D	01
24	236708 94	Bracket		A	B	C	D	01
25	239714 60	Carburettor support		A	B	C	D	01
26	260580 60	Heat shield		A	B	C	D	01
27	262307	Heat shield				C	D	01
28	276216	Reflector		A				01
28	276219	Reflector			B	C	D	01
29	300118 59	Leg		A	B			04
29	300118 76	Leg					D	04
29	300118 77	Leg				C		04
30	300472	Base		A	B	C	D	01
31	301515 66	Door lock		A	B	C	D	01
32	303718 59	Blanking plate		A	B			01
32	303718 76	Blanking plate					D	01
32	303718 77	Blanking plate				C		01
33	303828 59	Flue collar	Ø 120/127	A	B			01
33	303828 76	Flue collar	Ø 120/127				D	01
33	303828 77	Flue collar	Ø 120/127			C		01
34	306273	Back wall		A	B	C	D	01
35	309857 59	Front plate		A	B			01
35	309857 76	Front plate					D	01
35	309857 77	Front plate				C		01
36	309975 59	Main door		A	B			01
36	309975 76	Main door					D	01
36	309975 77	Main door				C		01
37	310723 59	R. side panel		A	B			01
37	310723 76	R. side panel					D	01
37	310723 77	R. side panel				C		01
38	310821 59	L. side panel		A	B			01



Ill. 10 - Stove - exploded view

38	310821 76	L. side panel					D	01
38	310821 77	L. side panel				C		01
39	312625	Burner support	A	B	C	D		01
40	321903	Rim	A	B	C	D		01
41	352124 59	Top plate	A	B				01
41	352124 76	Top plate				D		01
41	352124 77	Top plate			C			01
42	276607 60	Glass retainer	A	B	C	D		01
43	407204 60	Glass retainer	A	B	C	D		01
44	982608	Feed line regulator-burner	A	B	C	D		01
45	262216	Shield	A	B	C	D		01
46	194401	Catalyser cover	A	B	C	D		01
47	194402	Catalyser body	A	B	C	D		01
48	198205	Catalyser ring	A	B	C	D		01
49	199204	Regulator filter	A	B	C	D		01
50	142316	Gasket	7x3	A	B	C	D	0,86 m
51	261811 60	Heat shield	A	B	C	D		01
52	327901 59	Ash-tray	A	B				01
52	327901 76	Ash-tray				D		01
52	327901 77	Ash-tray			C			01
53	202801	Support		B	C	D		01
54	445902	Fixing plate		B	C	D		01
55	303301	Bearing	A	B	C	D		01
56	909401	Sliding door	A	B	C	D		01
57	325304	Reducing plate	A	B	C	D		02
58	327801	Clamp	A	B	C	D		01
59	72561	Mirror glass	34x(260x20)		B	C	D	01
59	72613	Mirror glass	34x(260x20)	A				01
59	199309	Mirror glass	1x(260x20)	A	B	C	D	34
60	988847	Complete door	A	B				01
60	988848	Complete door			C			01
60	988849	Complete door				D		01
61	122204	Winged nut	A	B	C	D		04
62	199310	Refractory glass	A	B	C	D		02
63	199311	Refractory glass	A	B	C	D		02
64	199312	Refractory glass	A	B	C	D		02
65	199313	Refractory glass	A	B	C	D		02
66	199314	Refractory glass	A	B	C	D		02
67	199315	Refractory glass	A	B	C	D		01
68	242915 10	Ground vat	A					01
69	104708	Plug	A	B	C	D		01
70	109718	Chain	A	B	C	D		01
71	905321	Basic burner	A	B	C	D		01