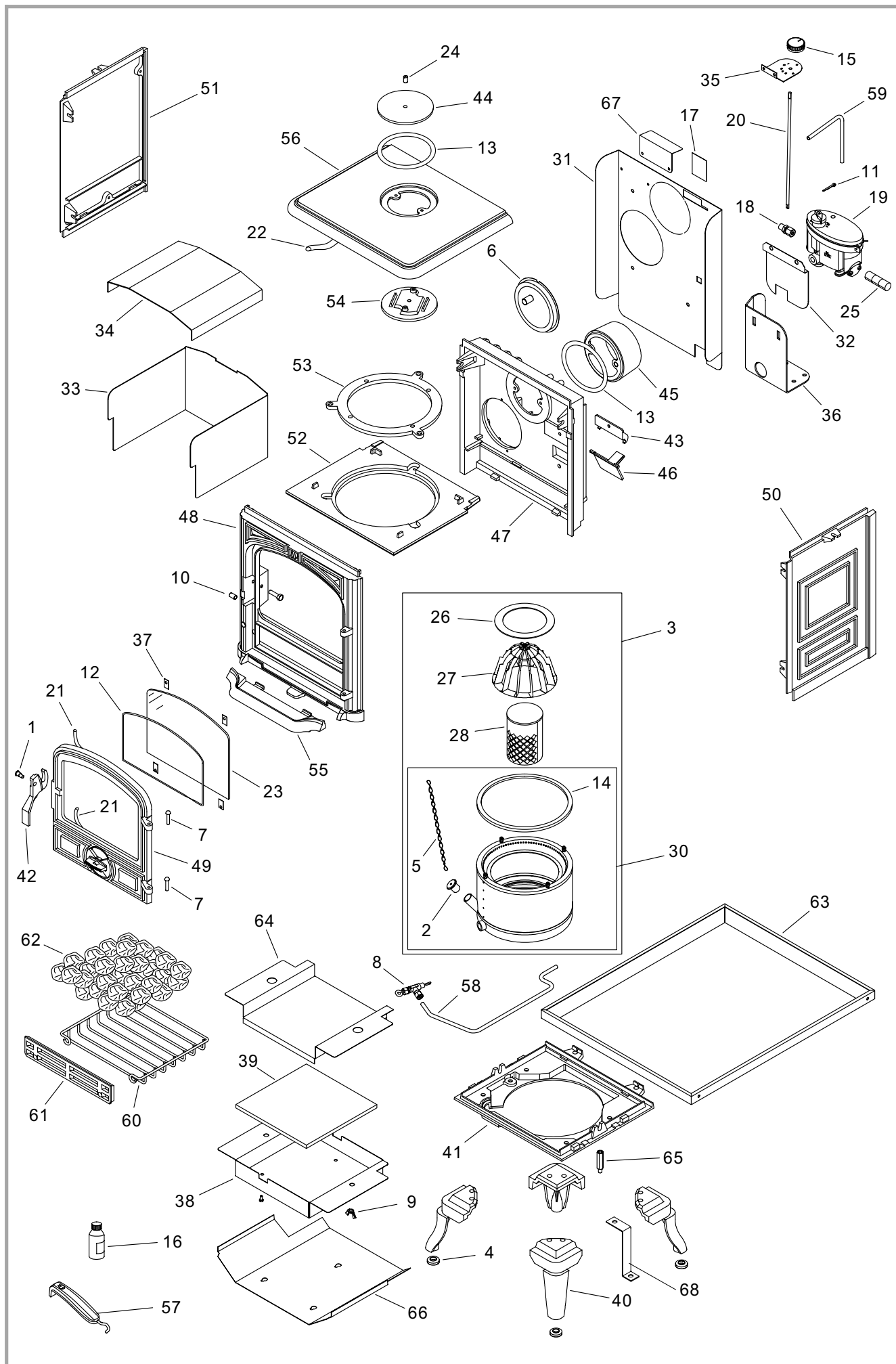


4. Spare parts

When ordering spare parts, please indicate : model n°, colour code, description of the part, code of the part. **Y = 174 05 05 Y** **J = 174 05 05 J**
K = 174 05 05 K **C = 174 05 05 C**

Example : Stove 174 05 05 , base 352155 EF

N°	Code	Description	Type	Y	J	K	C	Qty
1	100917	Cam pin	12x20 M7	Y	J	K	C	01
2	104708	Plug		Y	J	K	C	01
3	905328	Complete burner	C4	Y	J	K	C	01
4	109552	Cap		Y	J	K	C	04
5	109718	Chain		Y	J	K	C	01
6	110105	Barometric damper		Y	J	K	C	01
7	110404	Hinge pin	6x30	Y	J	K	C	02
8	119215	Descaler		Y	J	K	C	01
9	122204	Winged nut	diam. 8	Y	J	K	C	02
10	134258	Bushing		Y	J	K	C	01
11	134601	Pin	2x20	Y	J	K	C	01
12	142301	Adhesive rope		Y	J	K	C	0,90 m
13	142316	Gasket	7x3	Y	J	K	C	0,55 m
14	142327	Gasket		Y	J	K	C	01
15	149868	Knob		Y	J	K	C	01
16	161026	Touch-up paint				K		01
16	161027	Touch-up paint			J			01
16	161032	Touch-up paint					C	01
17	162550	Descriptive plate		Y	J	K	C	01
18	164205	Oil-tight nut		Y	J	K	C	02
19	165145	Float regulator		Y	J	K	C	01
20	179617	Regulator shaft		Y	J	K	C	01
21	181614	Ceramic rope	d. 9,5	Y	J	K	C	2,18 m
22	181615	Ceramic rope	d. 12	Y	J	K	C	1,35 m
23	188818	Glass		Y	J	K	C	01
24	189118	Screw	d. 10	Y	J	K	C	01
25	199204	Regulator filter		Y	J	K	C	01
26	198205	Catalyser ring		Y	J	K	C	01
27	194401	Catalyser cover		Y	J	K	C	01
28	194403	Catalyser body		Y	J	K	C	01
30	905327	Basic burner		Y	J	K	C	01
31	205389	Back panel		Y	J	K	C	01
32	209916	Protector		Y	J	K	C	01
33	222560	Flue baffle		Y	J	K	C	01
34	222611	Suppl. flue baffle		Y	J	K	C	01
35	236708	94 Bracket		Y	J	K	C	01
36	239715	60 Carburettor support		Y	J	K	C	01
37	259015	Fixing plate		Y	J	K	C	04
38	260583	60 Heat shield		Y	J	K	C	01
39	446302	Shield		Y	J	K	C	01
40	300118	MJ Leg				K		04
40	300118	MK Leg					C	04
40	300118	EF Leg		Y				04
40	300118	79 Leg			J			04
41	300483	Base		Y	J	K	C	01
42	301526	MJ Door lock				K		01
42	301526	MK Door lock					C	01
42	301526	EF Door lock		Y				01
42	301526	79 Door lock			J			01
43	303301	EF Bearing		Y	J	K	C	01
44	303726	MJ Blanking plate				K		01
44	303726	MK Blanking plate					C	01
44	303726	EF Blanking plate		Y				01
44	303726	79 Blanking plate			J			01
45	303829	MJ Flue collar				K		01
45	303829	MK Flue collar					C	01
45	303829	EF Flue collar		Y				01
45	303829	79 Flue collar			J			01
46	909401	Sliding door		Y	J	K	C	01
47	306279	EF Back wall		Y	J	K	C	01
48	309898	MJ Front plate				K		01
48	309898	MK Front plate					C	01
48	309898	EF Front plate		Y				01
48	309898	79 Front plate			J			01
49	309997	MJ Main door				K		01
49	309997	MK Main door					C	01
49	309997	EF Main door		Y				01
49	309997	79 Main door			J			01
50	310724	MJ R. side panel				K		01
50	310724	MK R. side panel					C	01
50	310724	EF R. side panel		Y				01
50	310724	79 R. side panel			J			01
51	310822	MJ L. side panel				K		01
51	310822	MK L. side panel					C	01
51	310822	EF L. side panel		Y				01
51	310822	79 L. side panel			J			01
52	312631	Burner support		Y	J	K	C	01
53	321903	Rim		Y	J	K	C	01



54	327802		Clamp	Y	J	K	C	01
55	327902	MJ	Ash-tray			K		01
55	327902	MK	Ash-tray				C	01
55	327902	EF	Ash-tray	Y				01
55	327902	79	Ash-tray		J			01
56	352155	MJ	Top plate			K		01
56	352155	MK	Top plate				C	01
56	352155	EF	Top plate	Y				01
56	352155	79	Top plate		J			01
57	808001	ED	Hand tool	Y		K	C	01
58	982629		Feed line regulator-burner	Y	J	K	C	01
59	982630		Vent-pipe	Y	J	K	C	01
60	818301		Grate	Y	J	K	C	01
61	307436		Fuel retainer	Y	J	K	C	01
62	109722		Ceramic coal 45x45x30	Y	J	K	C	35
63	242913		Ground vat	Y	J	K	C	01
64	262218		Shield	Y	J	K	C	01
65	124412		Strut	Y	J	K	C	02
66	262606	60	Shield	Y	J	K	C	01
67	202801		Support	Y	J	K	C	01
68	445910		Bracket	Y	J	K	C	01