

4. List of components

When ordering spare parts, specify the stove type and serial number, including the colour index, the name of the part and the part number, including the colour index.

Example :

"Belfort" stove, Ref. : 154 05 12 Y, top 352136 EF.

A : 1540512Y = *EF

B : 1540512J = *79

C : 1540512K = *MJ

D : 1540512C = *MK

N°	Codes	Description	Type	A	B	C	D	Qty
1	100917	Cam pin	12x20 M7	A	B	C	D	01
2	106038	Switch		A	B	C	D	01
3	109244	Cable	2,5 mm2	A	B	C	D	0,74 m
4	110404	Hinge pin	6x30	A	B	C	D	02
5	113105	Male spanner		A	B	C	D	01
6	122204	Winged nut	diam. 8	A	B	C	D	01
7	122701	Nut		A	B	C	D	01
8	124371	Electrode		A	B	C	D	01
9	134258	Bushing		A	B	C	D	01
10	139596	Injector LPG	18/120	A	B	C	D	01
11	142301	Adhesive rope		A	B	C	D	0,90 m
12	142433	Gasket		A	B	C	D	01
13	159014	Test nipple		A	B	C	D	01
14	161027	Touch-up paint	(J)		B			01
14	161031	Touch-up paint	(K)			C		01
14	161032	Touch-up paint	(C)				D	01
15	162665	Descriptive plate		A	B	C	D	01
16	166745	Gas valve + piezo		A	B	C	D	01
17	109723	Ceramic coal		A	B	C	D	04
18	174651	Coal support		A	B	C	D	01
19	179036	Thermostat		A	B	C	D	01
20	179224	Thermocouple		A	B	C	D	01
21	181602	Ceramic rope	Ø 8	A	B	C	D	1 m
22	181614	Ceramic rope	d. 9,5	A	B	C	D	1,42 m
23	181615	Ceramic rope	d. 12	A	B	C	D	1,35 m
24	181617	Ceramic rope	15x2	A	B	C	D	1,60 m
25	188315	Pilot		A	B	C	D	01
26	188798	Glass	267x205	A	B	C	D	01
27	189825	Screw	M5x6	A	B	C	D	01
28	189849	Screw	M6x16	A	B	C	D	01
29	236007	Burner plate		A	B	C	D	01
30	243404	Draught diverter		A	B	C	D	01
31	243505	Supplementary diverter		A	B	C	D	01
32	259015	Fixing plate		A	B	C	D	04
33	276006	Plate		A	B	C	D	01
34	300118 MJ	Leg				C		04
34	300118 MK	Leg					D	04
34	300118 EF	Leg		A				04
34	300118 79	Leg			B			04
35	300480	Base		A	B	C	D	01
36	301541 MJ	Door lock				C		01
36	301541 MK	Door lock					D	01
36	301541 EF	Door lock		A				01
36	301541 79	Door lock			B			01
37	303718 MJ	Blanking plate				C		01
37	303718 MK	Blanking plate					D	01
37	303718 EF	Blanking plate		A				01
37	303718 79	Blanking plate			B			01
38	303860 MJ	Flue collar				C		01
38	303860 MK	Flue collar					D	01
38	303860 EF	Flue collar		A				01
38	303860 79	Flue collar			B			01
39	306281 EF	Back wall		A	B	C	D	01
40	307437 EF	Fuel retainer		A	B	C	D	01
41	309886 MJ	Front plate				C		01
41	309886 MK	Front plate					D	01
41	309886 EF	Front plate		A				01
41	309886 79	Front plate			B			01
42	309997 MJ	Main door				C		01
42	309997 MK	Main door					D	01
42	309997 EF	Main door		A				01
42	309997 79	Main door			B			01
43	310725 MJ	R. side panel				C		01
43	310725 MK	R. side panel					D	01
43	310725 EF	R. side panel		A				01
43	310725 79	R. side panel			B			01
44	310823 MJ	L. side panel				C		01
44	310823 MK	L. side panel					D	01
44	310823 EF	L. side panel		A				01
44	310823 79	L. side panel			B			01
45	327801	Clamp		A	B	C	D	01
46	327902 MJ	Tray				C		01
46	327902 MK	Tray					D	01
46	327902 EF	Tray		A				01
46	327902 79	Tray			B			01

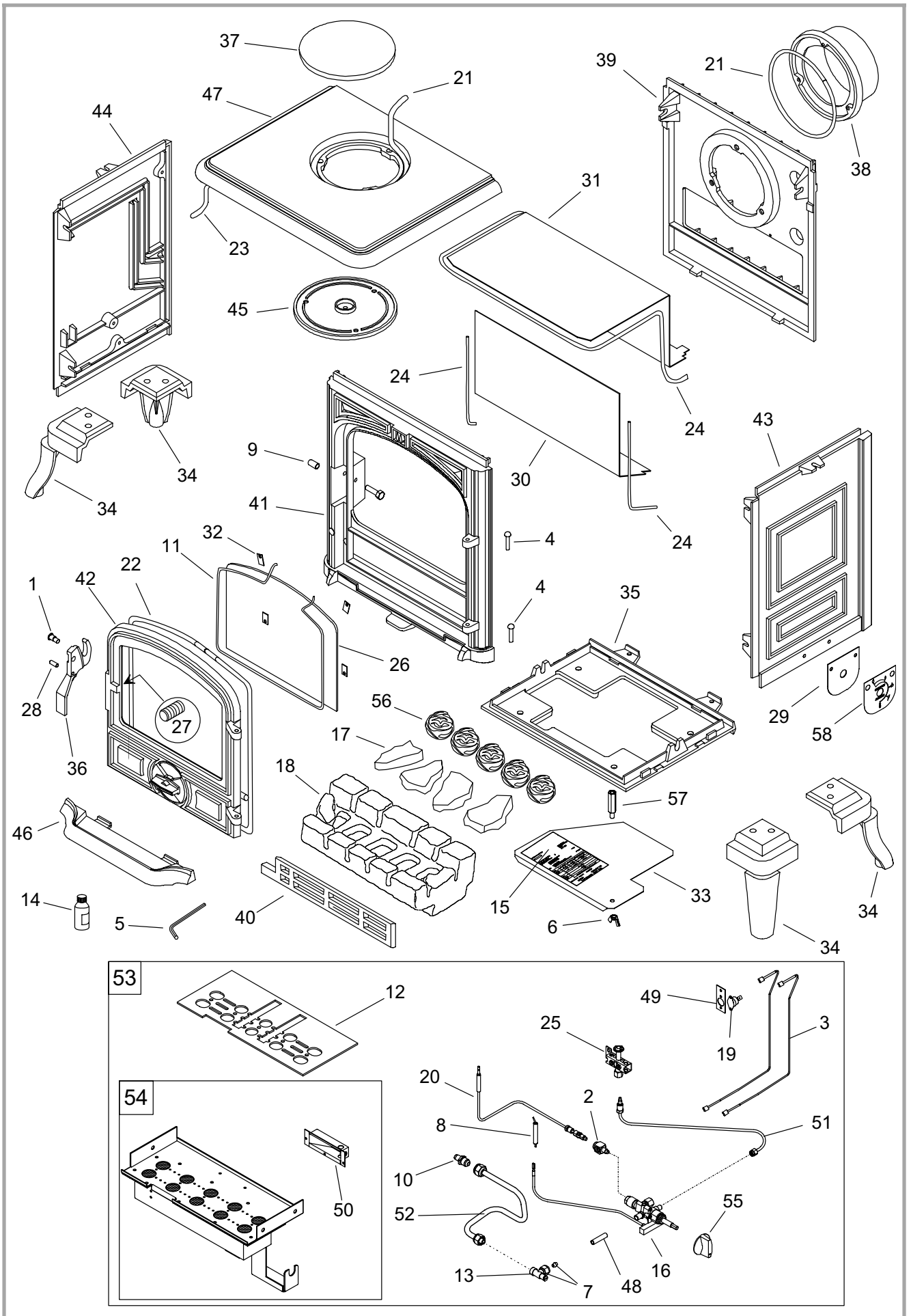


Figure 9 - Stove - Exploded view

47	352136	MJ	Top plate				C		01
47	352136	MK	Top plate					D	01
47	352136	EF	Top plate						01
47	352136	79	Top plate						01
48	467527		Test line	A	B	C		D	01
49	237203		Bracket	A	B	C		D	01
50	974602	60	Injector support LPG	A	B	C		D	01
51	982644		Pilot line	A	B	C		D	01
52	982646		Feed line regulator-burner	A	B	C		D	01
53	905927		Complete burner LPG	A	B	C		D	01
54	905926		Burner LPG	A	B	C		D	01
55	149862		Knob	A	B	C		D	01
56	109724		Ceramic coal	A	B	C		D	05
57	124412		Strut	A	B	C		D	01
58	158272		Control plate	A	B	C		D	01