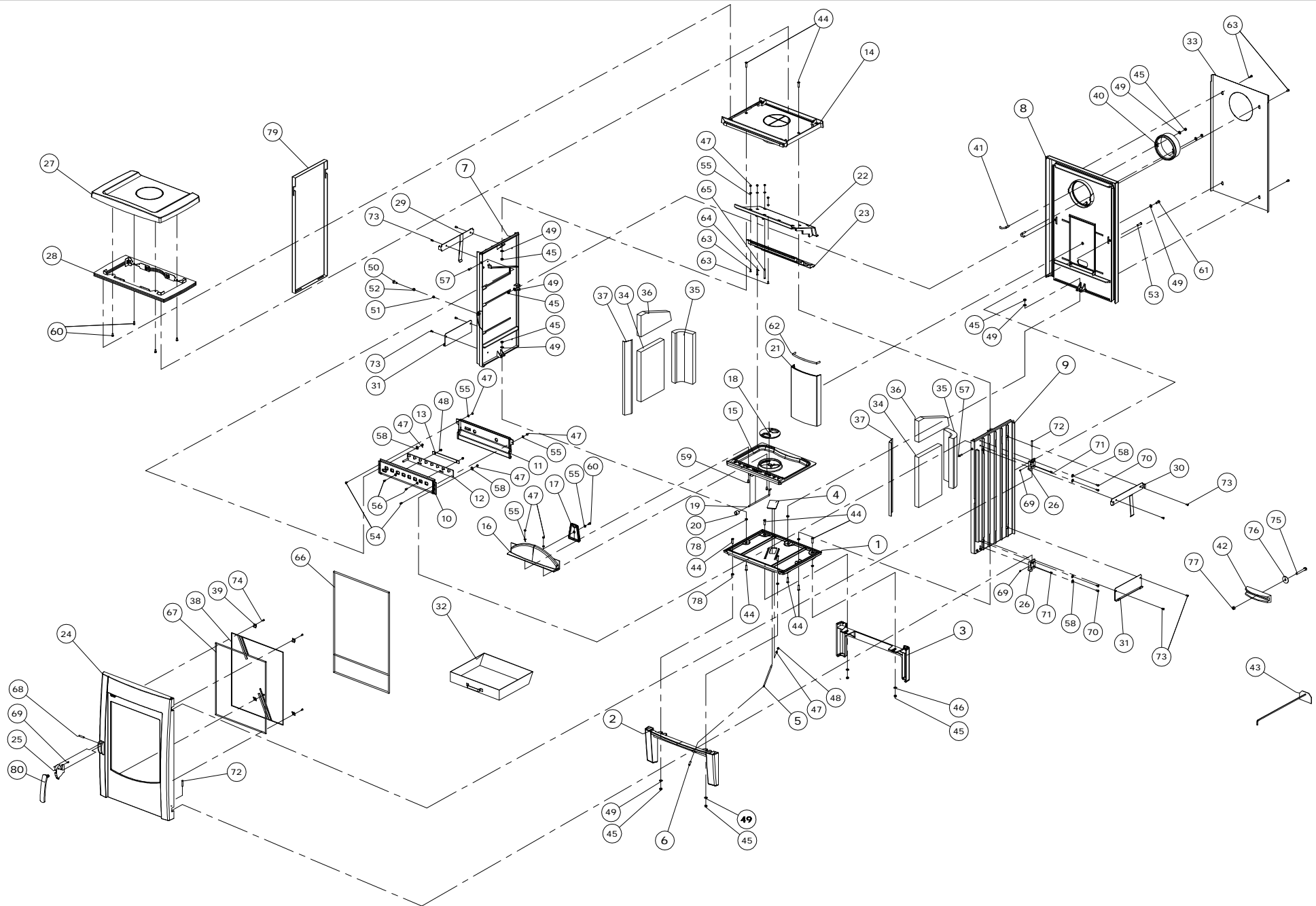




# ASTROLINE 1 (NO)



<b>Nr.</b>	<b>01,94255,000</b>	<b>ASTROLINE NO</b>	<b>SEE DRAWING 01,94255,000</b>
1	03.09371.100	BOTTOM PLATE	
2	03.52230.000	LEG FRONT	
3	03.52231.000	LEG REAR	
4	03.37938.000	DRAFTCONTROL	
5	03.65410.000	ROD	
6	03.33045.000	KNOB	
7	03.79568.000	SIDE PLATE L	
8	03.02434.000	BACK PLATE	
9	03.79569.000	SIDE PLATE R	
10	03.24397.000	FRONT PLATE	
11	03.37347.000	AIR DEFLECTOR	
12	02.37972.000	DRAFTCONTROL	
13	03.25304.000	GUIDE	
14	03.69163.000	TOP PLATE	
15	03.56317.000	BOTTOM FIRE ROOM	
16	03.77056.000	LOG RETAENER	
17	03.37625.000	AIR DUCT	
18	03.56238.000	DE-ASHING GRATE	
19	03.61311.000	ROD	
20	03.33020.000	KNOB	
21	03.37624.000	AIR DUCT	
22	03.76142.000	BAFFEL PLATE	
23	03.37221.000	STEEL BAFFEL	
24	03.15832.100	DOOR	
25	03.27024.000	LOCKINGPIE+G63CE	
26	03.58808.000	HINGH	
27	03.62114.000	TOP COVER PLATE	
28	02.37839.000	AIR GRILL	
29	02.07108.030	BRACKET L	
30	02.07108.031	BRACKET R	
31	03.07109.000	BRACKET	
32	02.05223.000	ASHBOX	
33	03.28074.100	HEATSHIELD	
34	03.77337.100	INNERPLATE SIDE	
35	03.77336.100	INNERPLATE CORNER	
36	03.77338.000	INNERPLATE TOP	
37	03.28895.000	INNERPLATE BRACKET	
38	03.26085.000	GLAS	
39	03.26101.000	GLAS RETEANER	
40	03.00341.000	FLUE COLLAR	
41	03.07107.100	FLUE COLLAR BRACKET	
42	03.72301.000	BRACKET	
43	02.59203.000	SCRAPER	
44	03.19733.000	SCREW M8X30	
45	03.19401.000	NUT M8	
46	03.18710.000	WASHER 8X25	
47	03.19410.000	NUT M6	
48	03.20001.000	LOCKNUT M6	
49	03.16502.000	WASHER 8X17	
50	03.20301.000	SCREW M8X20	
51	03.13616.000	BUCH	
52	03.13614.000	BUCH	
53	03.19701.000	SCREW M8X25	
54	03.19712.000	SCREW M6X16	

<b>Nr.</b>	<b>01,94255,000</b>	<b>ASTROLINE NO</b>	<b>SEE DRAWING 01,94255,000</b>
55	03.16501.000	WASHER 6X12	
56	03.20802.000	SCREW M6X16	
57	03.18602.000	SCREW M6X20	
58	03.18701.000	WASHER 6X18	
59	03.19306.000	BOLT M6X25	
60	03.19303.000	BOLT M6X12	
61	03.19312.000	BOLT M8X20	
62	04.26408.000	GLASFIBER ROPE 8MM	
63	03.19711.000	SCREW M6X12	
64	03.19718.000	SCREW M6X35	
65	03.19722.000	SCREW M6X60	
66	04.26410.000	GLASFIBER ROPE 10MM	
67	04.26405.000	GLASFIBER ROPE 5MM	
68	03.47207.000	PIN 8X32	
69	03.21701.000	SET SCREW M6X6	
70	03.19304.000	BOLT M6X16	
71	03.17210.000	SET SCREW M8X10	
72	03.17505.000	HINGHPIN 6X35	
73	03.19804.000	SCREW M6X10	
74	03.18101.000	SCREW M5X10	
75	03.19328.000	BOLT M10X75	
76	03.16503.000	WASHER 10X21	
77	03.19406.000	NUT M10	
78	03.17102.000	NUT M8	
79	03,62116,100	SIDE PLATE SCANDIC	
79	03,62117,020	SIDE PLATE BLACK	
79	03,62118,100	SIDE PLATE STEELER	
80	03,34103,000	HANDLE	