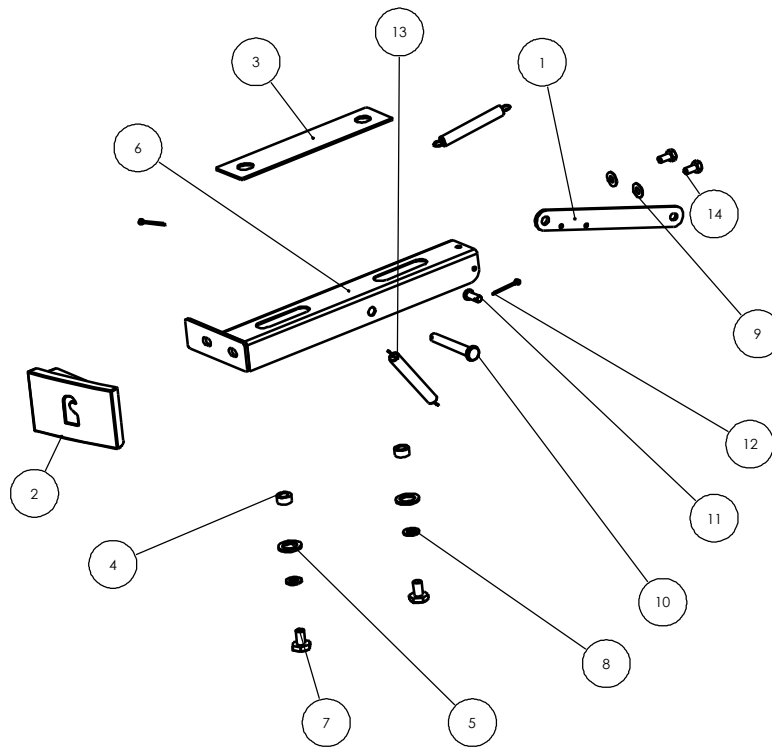




**Issue C**



Item	Part No.	Description	Ex.Vat.	Inc.Vat.	Item	Part No.	Description	Ex.Vat.	Inc.Vat.
1	010/ES08/12	Ash Flap Link .....	7.65	9.18	8	008/FFW005	Washer 15x8.5 .....	0.10	0.12
2	008/ES15/01	Slide Handle .....	14.70	17.64	9	008/FFW002	Washer 14x6 .....	0.10	0.12
3	008/ES15/08	PTFE Slider .....	4.40	5.28	10	008/FFP008	Clevis Pin 8mm Dia x 60 .....	2.50	3.00
4	008/ES15/09	Spacer .....	6.15	7.38	11	008/FFP007	Clevis Pin 6mm Dia x 16 .....	0.60	0.72
5	008/ES15/10	Washer .....	2.95	3.54	12	008/FFP006	R-Pin .....	0.10	0.12
6	004/ES15/17	Slide Assy .....	26.00	31.20	13	008/FFM043	Spring LEM 095D 12S .....	4.15	4.98
7	008/FFS064	M8 x 25 Hex Hd Screw .....	0.10	0.12	14	008/FFS044	Plastite Fixing .....	0.15	0.18

# Please specify colour when ordering Prices are shown in pounds sterling with vat at 20% They are correct at the date shown but may be subject to change without notice. E. & O.E These prices are subject to a carriage charge.

To obtain spare parts please contact your local stockist giving Model, Part No. and Description. In case of difficulty contact the manufacturer at the address shown. This drawing is for identification purposes only.

