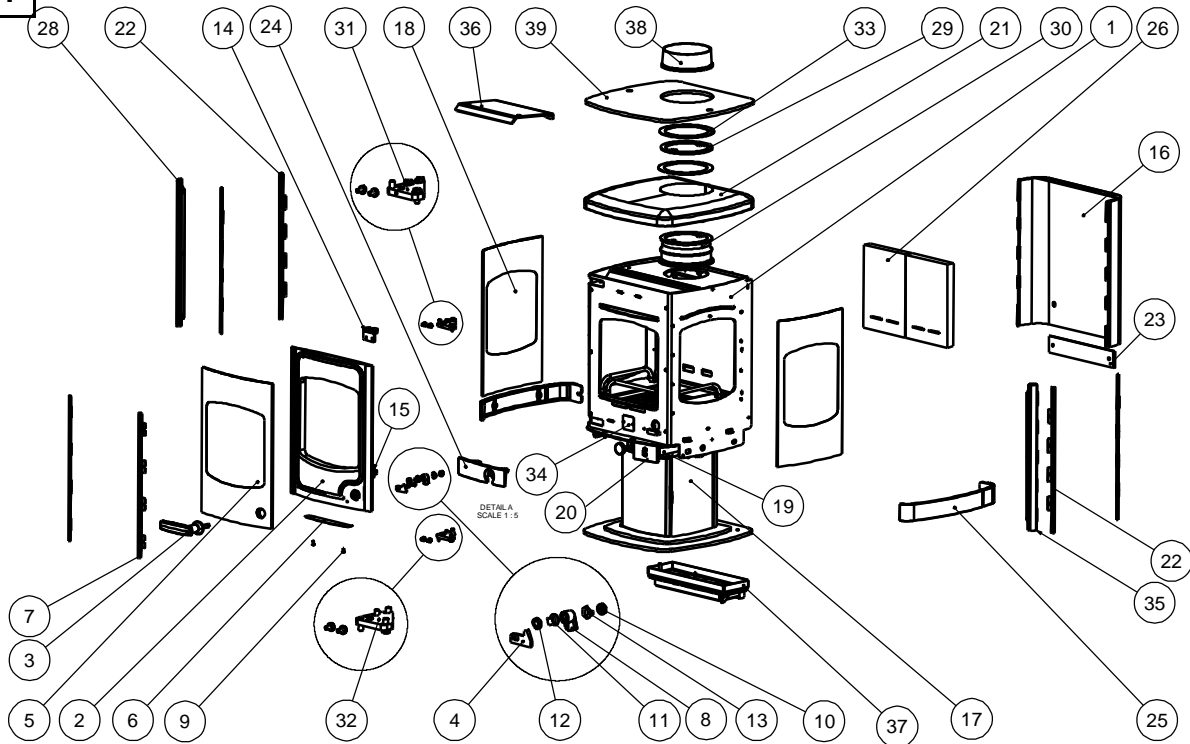




Issue H



Item	Part No.	Description	Ex.Vat.	Inc.Vat.	Item	Part No.	Description	Ex.Vat.	Inc.Vat.
1	001/KS010	KS Firebox			22#	004/KS030	Glazing Bar	14.10	16.92
2#	002/KS001/A	Door Assembly	500.00	600.00	23#	010/KS075	Rear Skirt	29.50	35.40
3	008/KS011/A	Handle Assembly	37.50	45.00	24#	002/KS120	Front Collar	45.00	54.00
4	010/KS014	Handle Locking Stop	5.70	6.84	25#	002/KS121	Side Skirt	58.00	69.60
5	006/KS018	Glass Front Panel	320.00	384.00	26	011/KS131	Firebrick	44.00	52.80
6	004/KS064	Glass Support	12.40	14.88	27	004/ES04/04	Glass Side Bracket	3.20	3.84
7#	004/KS066	Front Glass Retainer	14.10	16.92	28#	004/KS008	L.H. Upright Trim	31.50	37.80
8	002/AY14	Latch	11.20	13.44	29	010/KS095	Flue Ring	310.00	372.00
9	008/FFS042	M5x10 Skt Hd Cap Screw	0.15	0.18	30	010/KS094	KS Adaptor Assy	62.00	74.40
10	008/FFN001	M12 Half Nut	0.23	0.28	31	010/KS002	Hinge Plate Assy Top	18.80	22.56
11	004/KS063	Handle Stop	2.10	2.52	32	010/KS004	Hinge Plate Assy Lower	18.80	22.56
12	008/FFW015	M12 Double Coil Spring Washer	2.40	2.88	33	008/KS134	Sealing Gasket (Flue)	4.15	4.98
13	004/ST008	Tabbed Locking Washer	1.58	1.90	34	012/KS015	Serial No Label		
14	010/KS005	Upper Hinge	18.80	22.56	35#	004/KS007	R.H. Upright Trim	31.50	37.80
15	010/KS003	Lower Hinge	18.80	22.56	36	010/KS031	Throat Plate	50.50	60.60
16#	004/KS006	Rear Cover Assy	102.00	122.40	37	010/KS041	Airslide Control Assembly		
17#	010/KS039	Base Assy			38#	002/CH12B	Flue Collar	79.00	94.80
18	006/KS019	Glass (Side Panel)	285.00	342.00	39#	010/KS127	Top Plate	63.00	75.60
19	010/KS133	Riddler Handle Arm	31.00	37.20	40	008/KS135	Door Seal Kit	32.50	39.00
20	008/ES15/01	Riddler Handle	14.70	17.64	41	008/ES137	Glass Seal Kit	14.80	17.76
21	008/KS009	Soapstone Top Plate	315.00	378.00					

* These items are not shown on the drawing
 ## Please specify colour when ordering Prices are shown in pounds sterling with vat at 20% They are correct at the date shown but may be subject to change without notice. E. & O.E These prices are subject to a carriage charge.

To obtain spare parts please contact your local stockist giving Model, Part No. and Description. In case of difficulty contact the manufacturer at the address shown. This drawing is for identification purposes only.

