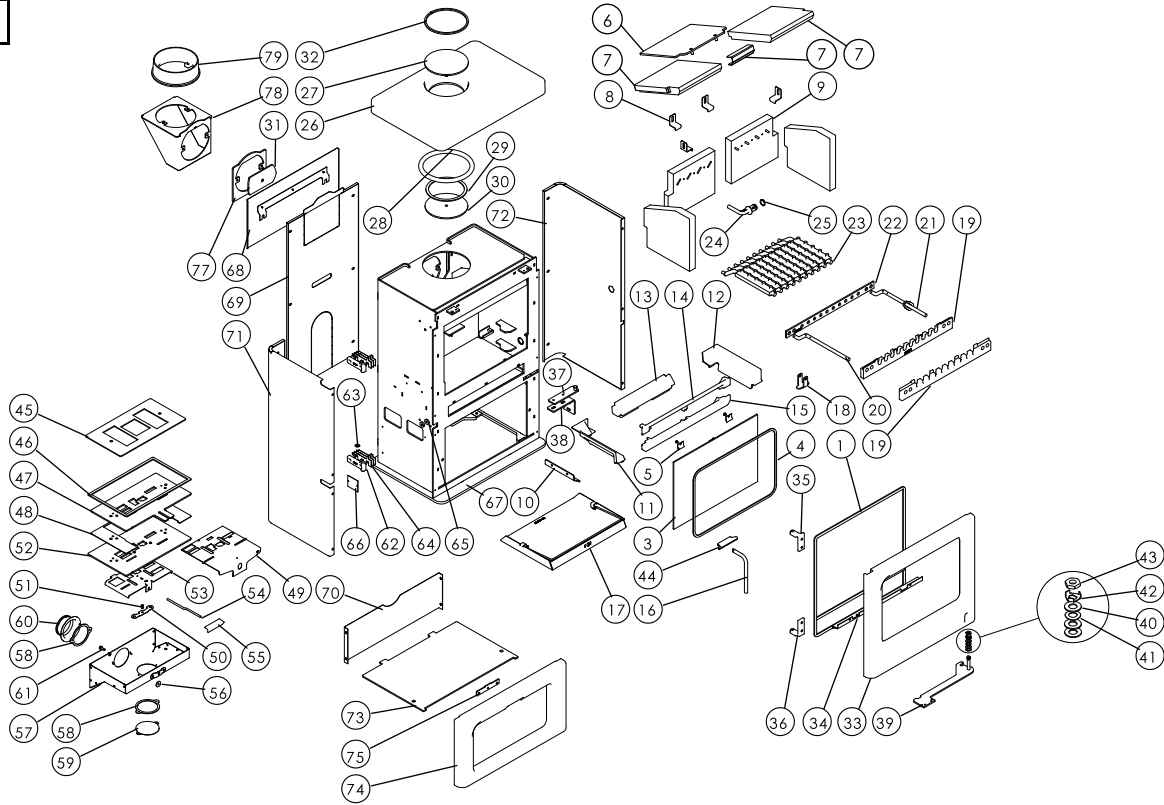




Issue C



Item	Part No.	Description	Ex.Vat.	Inc.Vat.	Item	Part No.	Description	Ex.Vat.	Inc.Vat.
1	008/AU035S	Rope Door Seal Inc Adhesive	23.00	27.60	41	008/FFW027	M10 Wavy Washer	1.26	1.51
2*	008/FW29	Door Seal Adhesive	7.50	9.00	42	010/BU061	Tabbed Locking Washer	1.84	2.21
3	006/AU018	Glass	71.00	85.20	43	008/FFN019	M10 Half Nut	1.58	1.90
4	008/EW45	Glass Seal	14.50	17.40	44	008/BU049	Door Handle	9.10	10.92
5	004/KV23	Glass Retainer	0.76	0.91	45	008/BU110	Air Control Gasket	11.10	13.32
6	010/AU032	Upper Throat Plate	31.00	37.20	46	008/KZ006	Air Box Gasket	12.80	15.36
7	011/AU031S	Set of Throat Plate Bricks Inc. Bracket ..	51.00	61.20	47	010/AU111	Air Control Top Slider Plate	33.00	39.60
8	004/XV30	Brick Bracket	4.00	4.80	48	004/AU112	Undergrate Slider Spacer	10.00	12.00
9	011/AU029S	Set of Firebricks	95.00	114.00	49	004/AU113	Multifuel Selection Slider	34.50	41.40
10	010/AU019	Undergrate Deflector	10.50	12.60	50	004/BR015	Clicker Retainer Plate	3.85	4.62
11	002/BU015L	LH Side Fire Plate	45.00	54.00	51	008/ES36/01	Brass Ball Catch	4.95	5.94
12	002/BU015R	RH Side Fireplate	45.00	54.00	52	010/AU130	Air Control Lower Plate	34.50	41.40
13	002/AU016	Back Fireplate	36.00	43.20	53	004/AU115	Air Control Slider	12.90	15.48
14	002/AU008	Deepening Bar	38.00	45.60	54	004/AU013	Air Control Rod	12.90	15.48
15	002/AU007	Front Fence	43.50	52.20	55	008/BU037	Air Control Handle	12.10	14.52
16	004/EZ095	Ashpan/Riddling Tool	26.00	31.20	56	008/BR052	Felt Washer	1.24	1.49
17	004/AP017	Ashpan	52.00	62.40	57	004/KZ039	Air Box Cover	36.00	43.20
18	010/BU097	Carrier Bar Clamping Bracket	9.85	11.82	58	008/CR063	Duct Gasket	5.25	6.30
19	002/AY30	Carrier Bar	52.50	63.00	59	004/CR064	Blanking Plate	10.70	12.84
20	012/AY13	Idler Rod	37.50	45.00	60	010/CR048/S	Air Inlet Spigot	22.50	27.00
21	010/BU077	Riddler Rod Assembly	39.00	46.80	61	008/FFS067	Defra Stop	0.72	0.86
22	010/AU033	Mover Bar	45.50	54.60	62	002/BU040	Door Hinge Bracket	23.50	28.20
23	002/CG20S10	Set of Grate Bars (10)	150.00	180.00	63	008/FFW024	M8 Brass Washer	0.72	0.86
24	002/BU098	Riddler Spigot	31.50	37.80	64	004/BU039	Door Hinge Shim	7.75	9.30
25	008/FFM081	Circlip	1.71	2.05	65	010/DY24	Spacer	1.71	2.05
26#	003/AU009	Cast Top	150.00	180.00	66	012/AU011	Serial No. Label		
27	010/KZ132	Blanking Plate	28.50	34.20	67#	001/AU010	Firebox		
28	008/KZ136	Flue Fixing Rope Seal	9.85	11.82	68#	005/AU081	Rear Heatshield	45.50	54.60
29	008/KS134	Blanking Plate Seal	4.15	4.98	69#	005/AU080	Rear Panel	49.50	59.40
30	010/KZ133	Blanking Plate Retainer	16.20	19.44	70#	005/AU059	Rear Lower Panel	36.00	43.20
31	010/AY51	Clamping Plate	21.00	25.20	71#	005/AU093L	Left Side Panel	59.00	70.80
32#	010/KZ131	Top Flue Trim Ring	16.90	20.28	72#	005/AU093R	Right Side Panel	59.00	70.80
33#	003/AU001A	Door Casting	300.00	360.00	73#	010/AU058	Base Plate	43.00	51.60
34	004/AU050	Rope Seal Channel	21.50	25.80	74#	003/AU072	Front Casting	52.50	63.00
35	002/BU041	Upper Hinge	29.50	35.40	75	010/AU014	Air Control Rod Guide	7.75	9.30
36	002/BU042	Lower Hinge	29.50	35.40	76	010/EW51	Ash Carrier (Optional Extra)	132.00	158.40
37	010/BU063	Door Latch	16.20	19.44	77#	010/AU021	Vertical Rear Flue Adapter Spacer	10.50	12.60
38	010/BU064	Door Latch Bracket	11.40	13.68	78#	010/TW33	Vertical Rear Flue Adapter (Opt'l Extra) ..	132.00	158.40
39#	010/AU060	Door Catch Arm	36.00	43.20	79#	002/CH12B	Flue Collar	79.00	94.80
40	008/FFW029	M10 Brass Washer	0.30	0.36					

*These items are not shown on the drawing.

Please specify colour when ordering. Prices are shown in pounds sterling with vat at 20% They are correct at the date shown but may be subject to change without notice. E. & O.E These prices are subject to a carriage charge.

To obtain spare parts please contact your local stockist giving Model, Part No. and Description. In case of difficulty contact the manufacturer at the address shown. This drawing is for identification purposes only.

