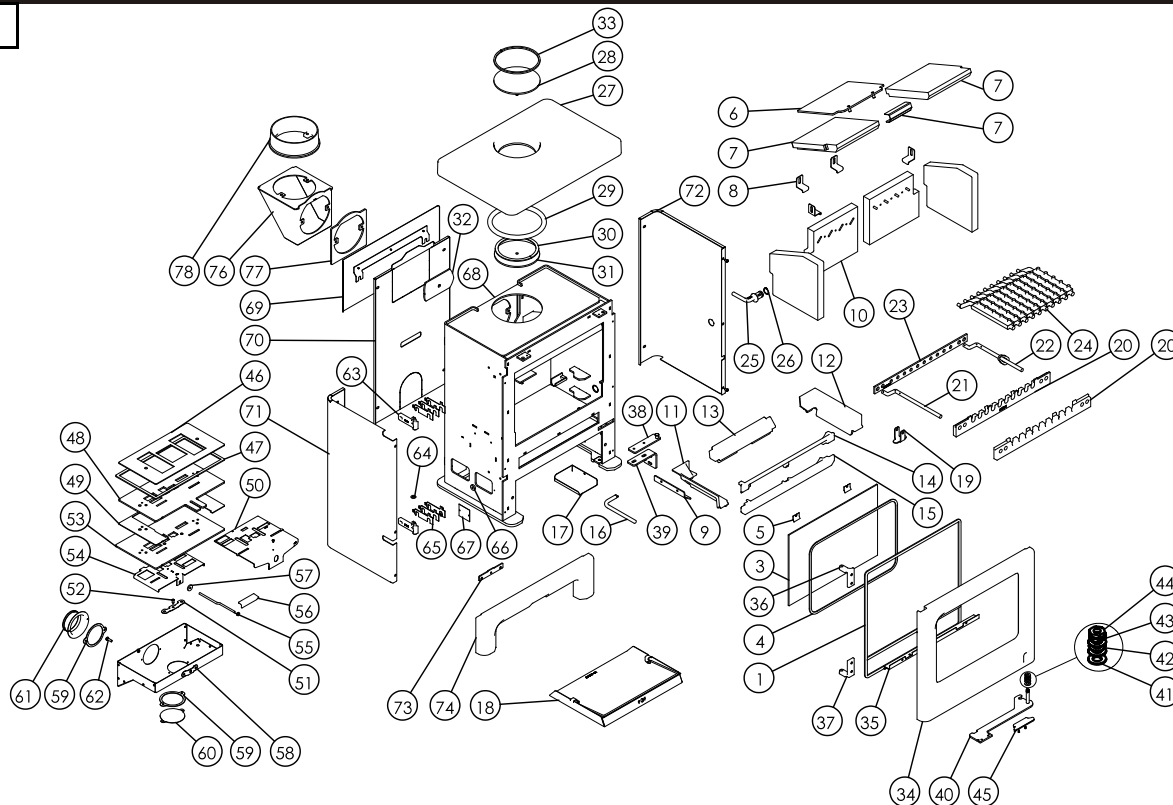




Issue C



Item	Part No.	Description	Ex.Vat.	Inc.Vat.	Item	Part No.	Description	Ex.Vat.	Inc.Vat.
1	008/AU035S	Rope Door Seal Inc Adhesive .....	23.00	27.60	40#	010/AU060	Door Catch Arm .....	36.00	43.20
2*	008/FW29	Door Seal Adhesive .....	7.50	9.00	41	008/FFW029	M10 Brass Washer .....	0.30	0.36
3	006/AU018	Glass .....	71.00	85.20	42	008/FFW027	M10 Wavy Washer .....	1.26	1.51
4	008/EW45	Glass Seal .....	14.50	17.40	43	010/BU061	Tabbed Locking Washer .....	1.84	2.21
5	004/KV23	Glass Retainer .....	0.76	0.91	44	008/FFN019	M10 Half Nut .....	1.58	1.90
6	010/AU032	Upper Throat Plate .....	31.00	37.20	45	008/BU049	Door Handle .....	9.10	10.92
7	011/AU031S	Set of Throat Plate Bricks Inc. Bracket ..	51.00	61.20	46	008/BU110	Air Control Gasket .....	11.10	13.32
8	004/XV30	Brick Bracket .....	4.00	4.80	47	008/KZ006	Air Box Gasket .....	12.80	15.36
9	010/AU019	Undergrate Deflector .....	10.50	12.60	48	010/AU111	Air Control Top Slider Plate .....	33.00	39.60
10	011/AU029S	Set of Firebricks .....	95.00	114.00	49	004/AU112	Undergrate Slider Spacer .....	10.00	12.00
11	002/BU015L	LH Side Fire Plate .....	45.00	54.00	50	004/AU113	Multifuel Selection Slider .....	34.50	41.40
12	002/BU015R	RH Side Fireplate .....	45.00	54.00	51	004/BR015	Clicker Retainer Plate .....	3.85	4.62
13	002/AU016	Back Fireplate .....	36.00	43.20	52	008/ES36/01	Brass Ball Catch .....	4.95	5.94
14	002/AU008	Deepening Bar .....	38.00	45.60	53	010/AU130	Air Control Lower Plate .....	34.50	41.40
15	002/AU007	Front Fence .....	43.50	52.20	54	004/AU115	Air Control Slider .....	12.90	15.48
16	004/EZ095	Ashpan/Riddling Tool .....	26.00	31.20	55	004/AU013	Air Control Rod .....	12.90	15.48
17	004/BU048	Tool Holder Tray .....	12.10	14.52	56	008/BU037	Air Control Handle .....	12.10	14.52
18	004/AP017	Ashpan .....	52.00	62.40	57	008/BR052	Felt Washer .....	1.24	1.49
19	010/BU097	Carrier Bar Clamping Bracket .....	9.85	11.82	58	004/KZ039	Air Box Cover .....	36.00	43.20
20	002/AY30	Carrier Bar .....	52.50	63.00	59	008/CR063	Duct Gasket .....	5.25	6.30
21	012/AY13	Idler Rod .....	37.50	45.00	60	004/CR064	Blanking Plate .....	10.70	12.84
22	010/BU077	Riddler Rod Assembly .....	39.00	46.80	61	010/CR048/S	Air Inlet Spigot .....	22.50	27.00
23	010/AU033	Mover Bar .....	45.50	54.60	62	008/FFS067	Defra Stop .....	0.72	0.86
24	002/CG20S10	Set of Grate Bars (10) .....	150.00	180.00	63	002/BU040	Door Hinge Bracket .....	23.50	28.20
25	002/BU098	Riddler Spigot .....	31.50	37.80	64	008/FFW024	M8 Brass Washer .....	0.72	0.86
26	008/FFM081	Circlip .....	1.71	2.05	65	004/BU039	Door Hinge Shim .....	7.75	9.30
27#	003/AU009	Cast Top .....	150.00	180.00	66	010/DY24	Spacer .....	1.71	2.05
28	010/KZ132	Blanking Plate .....	28.50	34.20	67	012/AUL011	Serial No. Label		
29	008/KZ136	Flue Fixing Rope Seal .....	9.85	11.82	68#	001/AUL010	Firebox		
30	008/KS134	Blanking Plate Seal .....	4.15	4.98	69#	005/AU081	Rear Heatshield .....	45.50	54.60
31	010/KZ133	Blanking Plate Retainer .....	16.20	19.44	70#	005/AUL080	Rear Panel .....	49.50	59.40
32	010/AY51	Clamping Plate .....	21.00	25.20	71#	005/AUL093L	Left Side Panel .....	78.00	93.60
33#	010/KZ131	Top Flue Trim Ring .....	16.90	20.28	72#	005/AUL093R	Right Side Panel .....	78.00	93.60
34#	003/AU001A	Door Assembly .....	300.00	360.00	73	010/AU014	Air Control Rod Guide .....	7.75	9.30
35	004/AU050	Rope Seal Channel .....	21.50	25.80	74#	003/AUL072	Front Casting .....	87.00	104.40
36	002/BU041	Upper Hinge .....	29.50	35.40	75*	010/EW51	Ash Carrier (Optional Extra) .....	132.00	158.40
37	002/BU042	Lower Hinge .....	29.50	35.40	76#	010/TW33	Vertical Rear Flue Adapter (Opt'l Extra)	132.00	158.40
38	010/BU063	Door Latch .....	16.20	19.44	77	010/AU021	Vertical Rear Flue Adapter Spacer .....	10.50	12.60
39	010/BU064	Door Latch Bracket .....	11.40	13.68	78#	002/CH12B	Flue Collar .....	79.00	94.80

\*These items are not shown on the drawing.

# Please specify colour when ordering. Prices are shown in pounds sterling with vat at 20% They are correct at the date shown but may be subject to change without notice. E. & O.E These prices are subject to a carriage charge.

To obtain spare parts please contact your local stockist giving Model, Part No. and Description. In case of difficulty contact the manufacturer at the address shown. This drawing is for identification purposes only.

