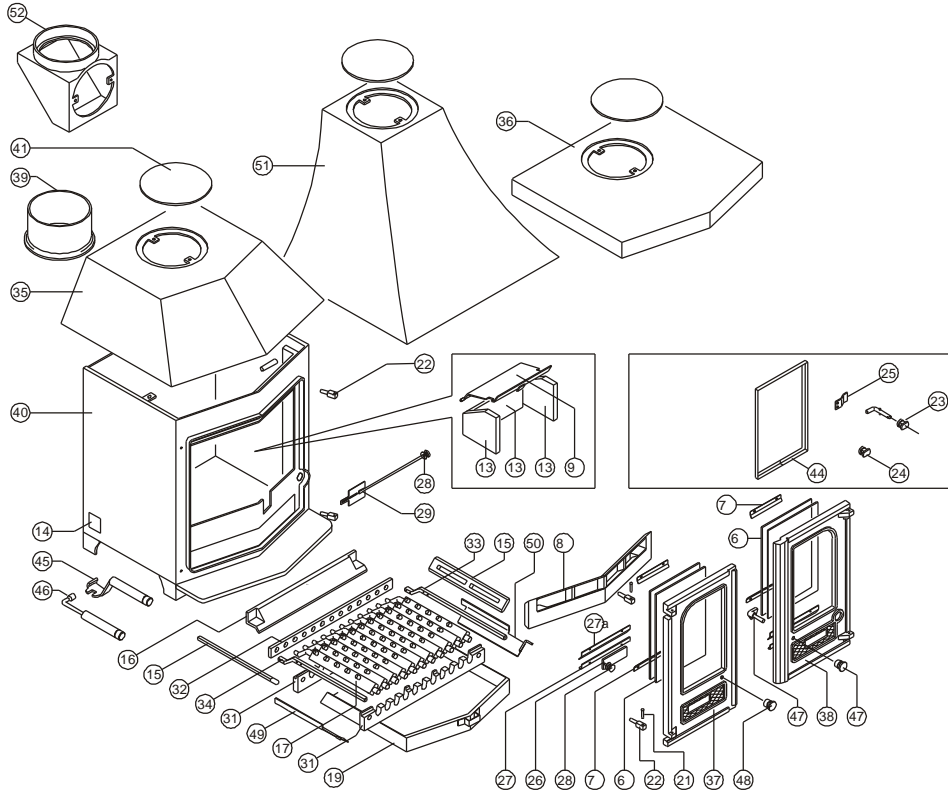




Issue N



Item	Part No.	Description	Ex.Vat.	Inc.Vat.	Item	Part No.	Description	Ex.Vat.	Inc.Vat.
1*	008/TW35L	Left Hand Door Seal	NA		28	002/TW13	Air Control Knob	19.90	23.88
2*	008/TW35R	Right Hand Door Seal	NA		29	004/TW41	Airwash Slide	15.20	18.24
3*	008/TW32	Canopy / Top Seal	31.50	37.80	31	002/EW30	Carrier Bar	57.00	68.40
4*	008/FW29	Door Seal Adhesive	7.50	9.00	32	012/EW33	Mover Bar	52.00	62.40
5*	008/TW75	Glass Seal Kit	16.10	19.32	33	012/TW23	Riddler Rod	26.50	31.80
6	006/LW30	Glass (Inc Seal)	39.50	47.40	34	012/CG05	Idler Rod	37.50	45.00
7	004/EW23	Glazing Bar	4.40	5.28	35#	010/TW06	Low Canopy		
8	002/TW07	Front Fire Bars	138.00	165.60	36#	010/TW05	Flat Top		
9	010/TW31J	Throat Plate	66.00	79.20	37	002/TW01	Left Hand Door	NA	
13	011/TW28S	Set of Fire Bricks (3)	92.00	110.40	38	002/TW02	Right Hand Door	NA	
14	012/TW45	Serial No. Label	NA		39	002/CH12A	Flue Collar	NA	
15	002/EW15	Side Fire Plate	37.50	45.00	40	001/TW10	Firebox (Country 8 M/F)		
16	002/EW16	Back Fire Plate	48.00	57.60	41	012/TW09	Blanking Plate	26.50	31.80
17	002/CG01	Bottom Grate Bar	18.30	21.96	42*	010/EW51	Ash Carrier (Optional Extra)	132.00	158.40
18	002/CG01S11	Set of Grate Bars (11 Per Set)	166.00	199.20	43*	012/TW43S	Extension Feet (Optional Extra)	84.00	100.80
19	004/BV17	Ashpan	88.00	105.60	44**	004/TW46	Double Glazing Frame	NA	
21	008/BW39/S	Hinge Pin Set	4.15	4.98	45	010/TW20/A	Door Opening / Ashpan Tool	NA	
22	008/FW27	Hinge Post	7.40	8.88	46	010/TW22/A	Riddling Tool	NA	
23**	012/TW03	Door Catch Assembly	NA		47	008/BV03/A	Door Catch Assembly	25.50	30.60
24**	002/TW12	Left Hand Door Knob	NA		48	002/BV12	Left Hand Door Knob	NA	
25**	012/TW10/6	Door Catch Plate	17.90	21.48	49	004/TW24L	Ash Shedding Plate Left Hand	21.50	25.80
26	012/TW14	Primary Air Slide	9.00	10.80	50	004/TW24R	Ash Shedding Plate Right Hand	21.50	25.80
27	004/TW18	Primary Air Slide Guide (Lower)	11.10	13.32	51	010/TW04	High Canopy	490.00	588.00
27a	004/BV18	Primary Air Slide Guide (Upper)	16.70	20.04	52#	010/TW33	Vert. Rear Flue Connector (Opt'l Extra)	132.00	158.40

* These items are not shown on the drawing.

** These items are only used on models prior to serial no. 1777. Prices are shown in pounds sterling with vat at 20% They are correct at the date shown but may be subject to change without notice. E. & O.E These prices are subject to a carriage charge.

To obtain spare parts please contact your local stockist giving Model, Part No. and Description. In case of difficulty contact the manufacturer at the address shown. This drawing is for identification purposes only.

