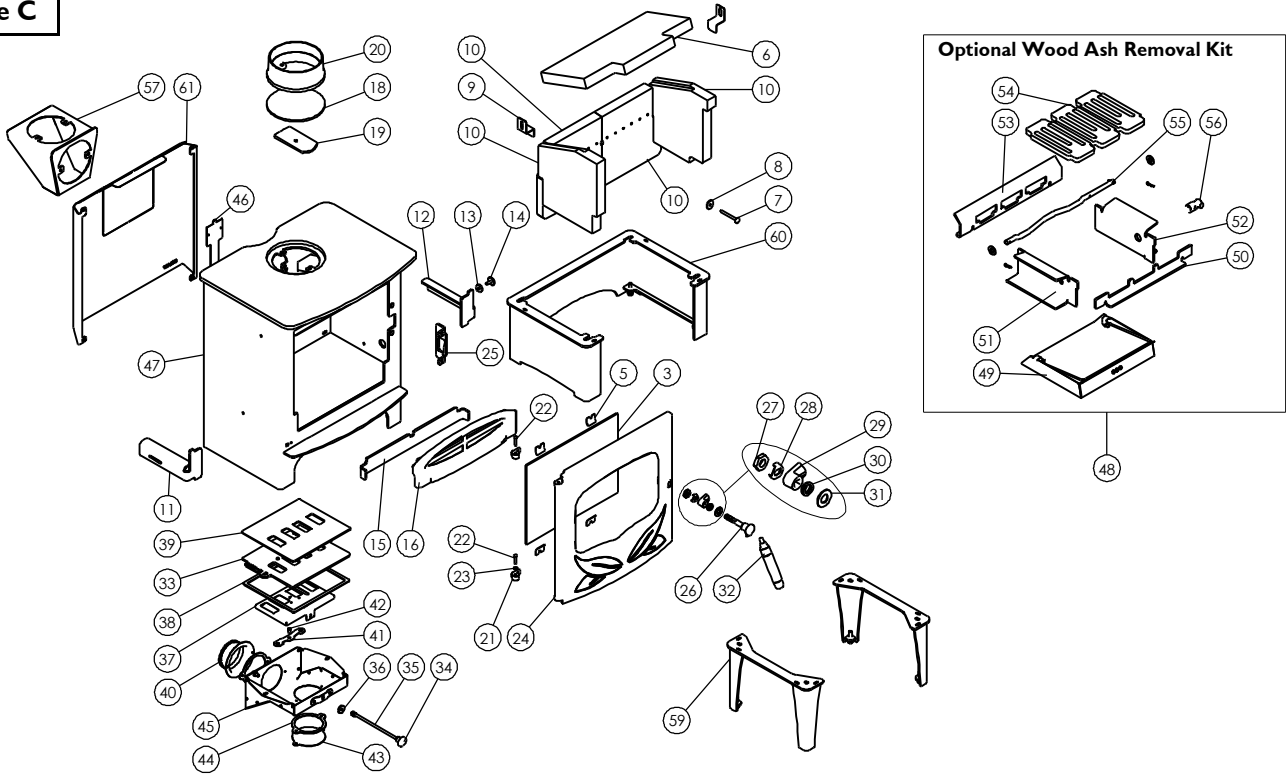




Issue C



Item	Part No.	Description	Ex.Vat.	Inc.Vat.	Item	Part No.	Description	Ex.Vat.	Inc.Vat.
1*	008/AT002	Rope Door Seal 10mm	12.75	15.30	33	010/CR005	Air Control Plate	62.00	74.40
2*	008/FW29	Door Seal Adhesive	7.50	9.00	34	008/AY37	Air Control Knob	5.25	6.30
3	006/NR019	Glass	51.00	61.20	35	004/ER016	Control Rod	2.40	2.88
4*	008/NR044	Glass Seal	12.50	15.00	36	008/BR052	Felt Washer	1.24	1.49
5	004/KV23	Glass Retainer	0.76	0.91	37	004/NRE007	Air Inlet Slide	23.00	27.60
6	011/NRE131	Brick Throat Plate	48.00	57.60	38	008/BR045	Lower Airbox Gasket	11.50	13.80
7	008/FFB125	Coach Bolt M6 x 45	0.79	0.95	39	008/CR006	Airbox Gasket	11.50	13.80
8	010/ER036	Brick Retaining Washer	2.10	2.52	40	008/CR048	Air Inlet Spigot	7.90	9.48
9	004/XV30	Brick Bracket	4.00	4.80	41	004/BR015	Clicker Retainer Plate	3.85	4.62
10	011/AT130S	Set of Firebricks	90.00	108.00	42	008/ES36/01	Brass Ball Catch	4.95	5.94
11	010/NR028	L.H. Brick and Fence Support	19.60	23.52	43	004/CR064	Coverplate	10.70	12.84
12	010/NR029	R.H. Brick and Fence Support	19.60	23.52	44	008/CR063	Duct Gasket	5.25	6.30
13	010/AT023	Blanking Spacer	2.10	2.52	45	004/CR041	Air Box Cover	45.50	54.60
14	004/DY22	Riddler Hole Plug	5.05	6.06	46	012/AT011	Serial No. Label		
15	010/AT078	Wood Ash Retainer	29.00	34.80	47#	001/AT010	Firebox		
16	002/NR017	Fuel Retainer	66.00	79.20	48	010/AT022	Grate Kit	210.00	252.00
17*	008/NV38	Flue Fixing Rope Seal	8.20	9.84	49	004/AT017	Ashpan	57.00	68.40
18	012/PV09	Blanking Plate	26.50	31.80	50	010/EY06	Front Grate Support	37.50	45.00
19	010/AY51	Clamping Plate	21.00	25.20	51	010/NR043	L.H. Grate Support	30.00	36.00
20#	002/PV12B	Flue Collar	62.00	74.40	52	010/NR042	R.H. Grate Support	30.00	36.00
21	002/BR020	Hinge Casting	12.80	15.36	53	010/NR061	Rear Grate Support	30.00	36.00
22	008/BW39/S	Hinge Pin Set 5mm x 25mm	4.15	4.98	54	002/EY03	Grate Plate	37.50	45.00
23	008/FFW026	M6 Heay Brass Washer	0.15	0.18	55	010/DR060	Riddler Rod	38.50	46.20
24#	002/AT001/A	Door Assembly	180.00	216.00	56	002/PX89	Riddler Knob	39.00	46.80
25	010/AT016	Latch Bracket			57#	010/BU034	Vertical Rear Flue Adaptor (Opt'l Extra	132.00	158.40
26	002/PX92	Door Knob & Spindle	25.50	30.60	58*	010/EW51	Ash Carrier (Optional Extra)	132.00	158.40
27	008/FFN001	M12 Half Nut	0.23	0.28	59#	010/ER051S	High Legs (Optional Extra)	142.00	170.40
28	004/ST008	Tabbed Locking Washer	1.58	1.90	60#	010/NR050	Store Stand (Optional Extra)	146.00	175.20
29	002/AY14	Door Catch	11.20	13.44	61#	010/NR057	Heat Shield (Optional Extra)	73.00	87.60
30	008/FFW015	M12 Double Coil Spring Washer	2.40	2.88	62*	004/AT097	Tool Pouch Hook	12.10	14.52
31	008/FFW008	M12 Washer	0.10	0.12	63*	008/AT096	Tool Holder Pouch	26.00	31.20
32	008/AT95	Door Tool	43.50	52.20					

*These items are not shown on the drawing
 # Please specify colour when ordering Prices are shown in pounds sterling with vat at 20% They are correct at the date shown but may be subject to change without notice. E. & O.E These prices are subject to a carriage charge.

To obtain spare parts please contact your local stockist giving Model, Part No. and Description. In case of difficulty contact the manufacturer at the address shown. This drawing is for identification purposes only.

