

 GAZCO



*New Generation*

**eReflex** electric fires

# Impress with eReflex

Fireside comfort come rain or shine – the new generation eReflex range effortlessly combines beauty with convenient electric heat, putting the artistry of fire right at your fingertips.

But the eReflex doesn't just deliver mesmerising effects and a fireside glow. Designed with the very latest Chromalight® LED technologies, a choice of stunning fuel beds, plus app control, this innovative electric fire range lets you choose the perfect ambience to suit your mood, with only your imagination to hold you back.



We are proud to have been recognised as an award-winning manufacturer, for our high-quality products and innovative technology. Find out more at [gazco.com/awards](https://www.gazco.com/awards)

eReflex 195RW with Oak Log-effect,  
shown as two-sided installation



**View the Video**  
at [www.gazco.com/ereflexrw](http://www.gazco.com/ereflexrw)



# Inspiring flames & fuel effects

Conjuring dramatic flame effects, sparkling embers and an enchanting ambience, the eReflex's ground-breaking lighting systems effortlessly create the magic of a real fire... and much more.

# immersive lighting system

eReflex fires use Gazco's Chromalight lighting system to create a mesmerising display with almost endless possibilities. Vivid flame effects are projected to appear amongst the fuel bed for a deep, three-dimensional display and can be set to natural amber, striking blue or even a combination of the two.

Each flame colour is enhanced with down-lighting, bathing the fuel bed in your choice of warming amber or cool white, for a truly immersive display. Eight fuel bed lighting colours illuminate the fuel effects from below, providing relaxing, mood-enhancing ambience. Fuel bed lighting can also transition through each vivid colour for a gradually changing spectrum, providing the ultimate wow factor.

# customisable fuel bed

Your eReflex comes with the life-like Oak Log effect, or the contemporary Crystal Ice effect – both of which can be interchanged at your leisure to suit your ambience.

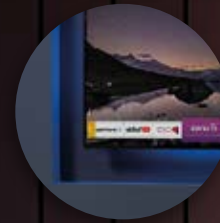


# optional mood lighting system

An optional mood lighting system lets you enhance your space, with up to 6 metres of LED lighting for accompanying shelves or around your TV. This kit offers 13 different lighting colours plus a gradually changing spectrum mode to complement your fire, or even your home's décor.

## Key features

- Can be easily configured as a three-sided, two-sided, or single-sided fire
- Chromalight® LED System
- Comes with life-like Oak Log effect, or the alternative Crystal Ice effect
- Pulsing glowing embers for realism
- Three flame colour choices including amber, amber with blue accent, and blue
- Downlighting illuminates fuel effects with lighting to complement flames
- Eight fuel bed lighting colours, plus cycling spectrum mode
- Programmable Thermostatic Eco Remote Control
- App control on iOS and Android devices
- Up to 2kW programmable heating
- Ecodesign Energy Saving Features
- Optional Mood Lighting System
- Flames can be enjoyed with or without the heat



Complementary down-lighting



Selection of 8 fuel bed lighting colours, plus spectrum mode



Choice of three flame effects



# Ambience on command

Two complimentary control systems put the eReflex's range of visual and heating capabilities in the palm of your hand. Adjust your desired fireside ambience... and relax.

The entire eReflex range can be controlled with a powerful app, available on an iOS or Android smart device. This app offers the ability to control your fire remotely, but with the ease of access from your phone or tablet.

## Finer Tuning

The app displays all settings clearly on your smart phone or tablet, giving you precision control over the fire's Chromalight® LED systems. Lighting settings are easily adjustable thanks to the app's slider controls.

## Programmable thermostatic heating and flame visuals

With the app, you have the added functionality of being able to easily program your fire to provide different heating schedules. Create up to four daily heating schedules to suit your lifestyle, with room to save up to three weekly programs.

## Lighting and Heat Timer

On the app, the eReflex's heat and lighting functions can be set to turn on according to a timer, independently from each other. Set a time to switch on the heat, or opt for the lighting effects alone for a fireside glow in the warmer months without the heat output.

The eReflex range is also controllable via the Eco Remote Control. See page 30 for more information.



Download the app using the QR code, or search for MusFlame on the App Store. [gazco.com/electricapp](http://gazco.com/electricapp)



eReflex 110RW with Oak Log-effect, shown as three-sided installation. Also shown: optional Mood Lighting system.



**WIN** the cost of your product back!

By registering your eReflex online for your free extended warranty. See page 33 for more details.



# complete *peace of mind*

## the gazco pedigree

When you choose Gazco, quality and technology are assured. From contemporary hang on the wall fires to traditional stoves, Gazco are committed to creating the ultimate in flame effect fires. Our research and development laboratories are amongst the most advanced in the industry, ensuring that the very latest innovations are incorporated into our products.

Gazco is part of the Stovax Group who offer a prestigious product range, which includes everything from the traditional to the ultra-contemporary in a wide array of styles and sizes. Whether your choice is solid fuel, gas, or electric you can be sure to find a stove or fireplace from our range to add the perfect warmth and character to your home. Full details of the Stovax Group's range of products can be found at [www.stovax.com](http://www.stovax.com).

Gazco is an ISO9001 and ISO14001 accredited company. Our rigorous quality control system ensures that all our appliances are safety checked and that they comply with the appropriate regulations, with all fires in this brochure bearing the UKCA and CE marks. Similarly, our environmental management systems ensure we work in a sustainable manner, whilst endeavouring to protect the environment by minimising any possible impact from our operations.



## experience the eReflex

To truly experience the eReflex's realistic flame and enchanting lighting effects, view our short showcase video online. Alternatively, you can visit your local expert retailer to see the eReflex first-hand!



at [www.gazco.com/ereflexrw](http://www.gazco.com/ereflexrw)



## expert retailer network

We take great care to ensure that our fires are designed, tested and manufactured to the highest possible quality and safety standards. We are just as concerned to make certain that they are sold and installed correctly so that you will enjoy years of pleasure from your purchase.

Accordingly, you will find our products are only available from experienced, independent retailers who will be happy to show you a selection of models locally in their showrooms, often fully operational. These independent retailers will discuss your individual requirements covering both technical issues and design, to ensure that you select the most appropriate product for your home. They will also be able to advise on, or assist with, the installation process as well as help provide any after-sales support and servicing your appliance may require in the future.

Whilst we encourage our retailers to promote fireplace products and their outlets via the internet, we do not believe suitable levels of customer care and satisfaction can be obtained from purchasing the product only online and we would strongly recommend that you consider this when undertaking your research and making a purchasing decision. Furthermore, please be aware that we do not offer technical support (beyond our statutory responsibilities) to products bought via nationwide online sales, where this support would normally be offered by one of our qualified, independent retailers.

In addition, Gazco fires purchased from within our Expert Retailer Network will have the additional benefit of an extended warranty period, subject to terms and conditions. Full details can be found at: [www.gazco.com](http://www.gazco.com).

## warranty information

Your Gazco retailer will provide you with a Two Year Warranty for your new electric fire providing it is registered with Gazco. Please note this warranty excludes certain consumable parts. Fires purchased outside of Gazco's Expert Retailer Network will carry a standard One Year Non-Extendable Warranty, or minimum statutory warranty for your country. Full warranty details, terms and conditions are available at [www.gazco.com](http://www.gazco.com).



## find and support your local retailer

You can find your nearest retailer by visiting: [www.gazco.com/retailers](http://www.gazco.com/retailers)



# Choosing your eReflex

## choose your size

The eReflex is available in various sizes, allowing you to find the perfect fit to create a statement centrepiece in your home.

*\*Dimensions shown in mm given are those overall visible upon installation. For detailed technical information, including overall fire dimensions, see page 28*



**eReflex 85RW**

W: 855 x H: 380 x D: 175\*



**eReflex 55RW**

W: 555 x H: 555 x D: 175\*



**eReflex 75RW**

W: 755 x H: 755 x D: 175\*



**eReflex 110RW**

W: 1105 x H: 380 x D: 175\*



**eReflex 150RW**

W: 1505 x H: 380 x D: 175\*



**eReflex 135RW**

W: 1355 x H: 380 x D: 175\*



**eReflex 195RW**

W: 1955 x H: 380 x D: 175\*



Chromalight  
Immersive LED  
System



Programmable  
Thermostatic Eco  
Remote Control




Multiple  
Flame Effects



Customisable  
Fuel Bed

Single, left or right corner, and three-sided options – all from one fire



 Single-sided



 Two-sided corner



 Three-sided

# eReflex 55RW



eReflex 55RW with Oak Log-effect, shown as two-sided installation

## Dimensions\*

555 x 555 x 175\* (WxHxD)



\*Dimensions in mm given are those overall visible upon installation.  
For technical information, see page 28 onwards.

Additional image shown on page 28.



## View the Video

at [www.gazco.com/ereflexrw](http://www.gazco.com/ereflexrw)

- Choice of fuel effects including life-like Oak Log, or alternative Crystal Ice
- Three flame colour choices: amber, amber with blue accent, and blue
- Downlighting illuminates fuel effect with lighting to complement flames
- Eight fuel bed lighting colours, plus cycling spectrum mode
- Programmable Thermostatic Eco Remote Control plus app control on iOS and Android devices
- Flames and lighting can be enjoyed with or without the heat
- Optional Mood Lighting System
- Compatible with Gazco stone mantels (see page 16)



eReflex 55RW with Oak Log-effect, shown as three-sided installation. Also shown: optional Mood Lighting system.



eReflex 75RW with Oak Log-effect, shown as two-sided installation. Also shown: optional Mood Lighting system.

# eReflex 75RW



eReflex 75RW with Oak Log-effect, shown as single-sided installation

## Dimensions\*

755 x 755 x 175\* (WxHxD)



\*Dimensions in mm given are those overall visible upon installation.  
For technical information, see page 28 onwards.

Additional images shown on pages 11 and 17.

 **View the Video**  
at [www.gazco.com/ereflexrw](http://www.gazco.com/ereflexrw)

- Choice of fuel effects including life-like Oak Log, or alternative Crystal Ice
- Three flame colour choices: amber, amber with blue accent, and blue
- Downlighting illuminates fuel effect with lighting to complement flames
- Eight fuel bed lighting colours, plus cycling spectrum mode
- Programmable Thermostatic Eco Remote Control plus app control on iOS and Android devices
- Flames and lighting can be enjoyed with or without the heat
- Optional Mood Lighting System
- Compatible with Gazco stone mantels (see page 16)

# Stone mantels

for eReflex 55RW & 75RW



Victorian Corbel



Cavendish Bolection



Georgian Roundel



Claremont



Grafton



Sandringham

Both the eReflex 55RW and 75RW can be combined with Gazco's beautiful stone mantels\* and optional hearths for a magnificent, traditional fireplace aesthetic. Choose from any one of the six period-influenced designs in a charming Limestone to create a stunning centrepiece in your home. For technical information, see page 29.

Mantel Styles	Dimensions* w x h (mm)
Claremont	1555 x 1143
Cavendish Bolection	1460 x 1320
Georgian Roundel	1460 x 1082
Grafton	1415 x 1165
Victorian Corbel	1525 x 1170
Sandringham	1550 x 1220



Limestone

\*All stone mantel installations require slip sets. The Stovax Heating Group do not provide slip sets for the 55RW or 75RW, but these can be sourced separately through your approved local retailer.

\*Dimensions given are those overall visible upon installation. For detailed technical information see page 29.







# eReflex 85RW



eReflex 85RW with Oak Log-effect, shown as single-sided installation

## Dimensions\*

855 x 380 x 175\* (WxHxD)



\*Dimensions in mm given are those overall visible upon installation.  
For technical information, see page 28 onwards.

Additional image shown on page 5.

 **View the Video**  
at [www.gazco.com/ereflexrw](http://www.gazco.com/ereflexrw)

- Choice of fuel effects including life-like Oak Log, or alternative Crystal Ice
- Three flame colour choices: amber, amber with blue accent, and blue
- Downlighting illuminates fuel effect with lighting to complement flames
- Eight fuel bed lighting colours, plus cycling spectrum mode
- Programmable Thermostatic Eco Remote Control plus app control on iOS and Android devices
- Flames and lighting can be enjoyed with or without the heat
- Optional Mood Lighting System
- Media wall compatible (see page 33)

# eReflex 110RW



eReflex 110RW with Oak Log-effect, shown as two-sided installation

## Dimensions

1105 x 380 x 175\* (WxHxD)



\*Dimensions in mm given are those overall visible upon installation.  
For technical information, see page 28 onwards.

Additional image shown on page 8.



## View the Video

at [www.gazco.com/ereflexrw](http://www.gazco.com/ereflexrw)

- Choice of fuel effects including life-like Oak Log, or alternative Crystal Ice
- Three flame colour choices: amber, amber with blue accent, and blue
- Downlighting illuminates fuel effect with lighting to complement flames
- Eight fuel bed lighting colours, plus cycling spectrum mode
- Programmable Thermostatic Eco Remote Control plus app control on iOS and Android devices
- Flames and lighting can be enjoyed with or without the heat
- Optional Mood Lighting System
- Media wall compatible (see page 33)



eReflex 110RW with Oak Log-effect, shown as single-sided installation. Also shown: optional Mood Lighting system.



# eReflex 135RW



eReflex 135RW with Oak Log-effect, shown as single-sided installation

## Dimensions

1355 x 380 x 175\* (WxHxD)



\*Dimensions in mm given are those overall visible upon installation.  
For technical information, see page 28 onwards.



## View the Video

at [www.gazco.com/ereflexrw](http://www.gazco.com/ereflexrw)

- Choice of fuel effects including life-like Oak Log, or alternative Crystal Ice
- Three flame colour choices: amber, amber with blue accent, and blue
- Downlighting illuminates fuel effect with lighting to complement flames
- Eight fuel bed lighting colours, plus cycling spectrum mode
- Programmable Thermostatic Eco Remote Control plus app control on iOS and Android devices
- Flames and lighting can be enjoyed with or without the heat
- Optional Mood Lighting System
- Media wall compatible (see page 33)

# eReflex 150RW



eReflex 150RW with Crystal Ice effect, shown as single-sided installation. Also shown: optional Mood Lighting system.

## Dimensions

1505 x 380 x 175\* (WxHxD)



\*Dimensions in mm given are those overall visible upon installation. For technical information, see page 28 onwards.

Additional images shown on pages 31 and back cover.



## View the Video

at [www.gazco.com/ereflexrw](http://www.gazco.com/ereflexrw)

- Choice of fuel effects including life-like Oak Log, or alternative Crystal Ice
- Three flame colour choices: amber, amber with blue accent, and blue
- Downlighting illuminates fuel effect with lighting to complement flames
- Eight fuel bed lighting colours, plus cycling spectrum mode
- Programmable Thermostatic Eco Remote Control plus app control on iOS and Android devices
- Flames and lighting can be enjoyed with or without the heat
- Optional Mood Lighting System
- Media wall compatible (see page 33)





eReflex 150RW with Oak Log-effect, shown as three-sided installation. Also shown: optional Mood Lighting system.



eReflex 195RW with Oak Log-effect, shown as three-sided installation.  
Also shown: optional Mood Lighting system.

# eReflex 195RW



eReflex 195RW with Oak Log-effect, shown as single-sided installation. Also shown: optional Mood Lighting system.

## Dimensions

1955 x 380 x 175\* (WxHxD)



\*Dimensions in mm given are those overall visible upon installation.  
For technical information, see page 28 onwards.

Additional images shown on pages 3, 7 and 32.



**View the Video**

at [www.gazco.com/ereflexrw](http://www.gazco.com/ereflexrw)

- Choice of fuel effects including life-like Oak Log, or alternative Crystal Ice
- Three flame colour choices: amber, amber with blue accent, and blue
- Downlighting illuminates fuel effect with lighting to complement flames
- Eight fuel bed lighting colours, plus cycling spectrum mode
- Programmable Thermostatic Eco Remote Control plus app control on iOS and Android devices
- Flames and lighting can be enjoyed with or without the heat
- Optional Mood Lighting System
- Media wall compatible (see page 33)



# Technical information

The following pages provide the dimensional, heat output, and product code information you will need to choose your eReflex fire. For more detailed specifications, please consult your local Gazco retailer. Complete installation instructions can be downloaded from [www.gazco.com](http://www.gazco.com)

## eReflex electric fires

Description	Product Code	Flame Viewing Area (w x h)	Heat Output
eReflex 55RW Electric Fire	<b>210-116</b>	555 x 555	Up to 2.00kW
eReflex 75RW Electric Fire	<b>210-121</b>	755 x 755	Up to 2.00kW
eReflex 85RW Electric Fire	<b>210-130</b>	855 x 380	Up to 2.00kW
eReflex 110RW Electric Fire	<b>210-142</b>	1105 x 380	Up to 2.00kW
eReflex 135RW Electric Fire	<b>210-153</b>	1355 x 380	Up to 2.00kW
eReflex 150RW Electric Fire	<b>210-177</b>	1505 x 380	Up to 2.00kW
eReflex 195RW Electric Fire	<b>210-164</b>	1955 x 380	Up to 2.00kW

## Optional mood lighting

Description	Product Code
Optional Mood Lighting Kit	<b>923-835</b>

## eReflex stone mantels 55R & 75R

Description	Frame Finish	Product Code	Width	Height	Depth
Claremont	Limestone	<b>9002CLTL</b>	1555	1143	190
Cavendish Bolection	Limestone	<b>9000CATL</b>	1460	1320	207
Georgian Roundel	Limestone	<b>9001GETL</b>	1460	1082	200
Grafton	Limestone	<b>9003GRTL</b>	1415	1165	105
Victorian Corbel	Limestone	<b>9004VITL</b>	1525	1170	250
Sandringham	Limestone	<b>9005SATL</b>	1550	1220	227

All dimensions in mm

## eReflex hearth information

Small Hearth for Stone Mantel	Limestone	<b>934-193</b>	1524	53	228
Large Hearth for Stone Mantel	Limestone	<b>934-351</b>	1625	53	457

\*Please note, all stone mantels require a slip set, which can be sourced separately by speaking to your local retailer.



Small Hearth

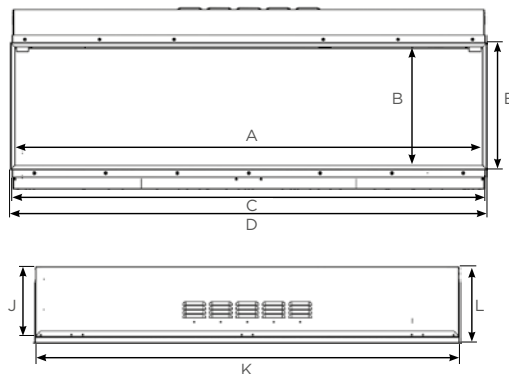
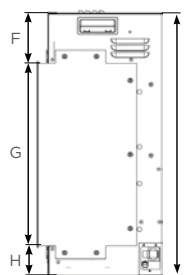


Large Hearth

Gazco's selection of beautiful stone hearths include either small or large sizes in Limestone. The large size is styled with a stepped edge design whilst the small has a flush finish.

## Dimensions

(All dimensions in mm)



	A	B	C	D	E	F	G	H	I	J	K	L
eReflex 55RW	555	555	573	583	583	135	573	67	775	282	567	302
eReflex 75RW	755	755	773	783	783	111	773	67	950	282	767	302
eReflex 85RW	855	380	873	883	408	111	398	67	575	252	867	272
eReflex 110RW	1105	380	1123	1133	408	111	398	67	575	252	1117	272
eReflex 135RW	1355	380	1373	1383	408	111	398	67	575	252	1367	272
eReflex 150RW	1505	380	1523	1533	408	111	398	67	575	252	1517	272
eReflex 195RW	1955	380	1973	1983	408	111	398	67	575	252	1967	272

The above information is to assist in your choice of a suitable eReflex fire. It is not intended to be all information required to install your fire. This can be obtained from your local Gazco retailer or you can download the full installation instructions from the Gazco website at: [www.gazco.com](http://www.gazco.com)

# Complete control

## Flame Options

The eReflex's flames can be set to three different colour choices, including amber, amber with blue accent, and blue, plus a rolling spectrum mode that gradually transitions through all colours. Five brightness settings allow you to create a bespoke visual.

## Glowing Embers

Beneath the logs and ember effects, the eReflex's up-lighting LEDs can be set to eight colours to either match or contrast with the flames. There is also a spectrum mode to cycle through each colour as well as adjustable brightness.

## Downlighting

Hidden in the top of the eReflex's firebox are discreet downlighting LEDs which bathe the fuel effects in different colours to complement the various flame choices, adding to the immersion.

## Optional Mood Lighting

Effortlessly control the eReflex's optional Mood Lighting system using either the remote control or the innovative app (page 6). Choose from 13 colours or the gradually changing spectrum mode, as well as adjustable brightness.

## Thermostatic Heating

Choose your preferred room temperature and the eReflex does the rest for you. Select between 16 and 35°C and the fire's 2kW heater will adjust its power to reach the desired level as efficiently as possible.

## Adaptive Start Control

Adaptive Start allows the eReflex to automatically turn on up to 45 minutes in advance of a pre-set time to reach the desired room temperature, ready for when you sit down and relax.

## Open Window Detection

Should ambient room temperatures drop by 4°C within a space of five minutes, like when a window is opened, the fire's heater will automatically turn off to save energy. Heating can be easily resumed with the remote control or app.

## Ecodesign Compliant

The eReflex's innovative energy saving features make it compliant with stringent Ecodesign energy product standards.



Download the app using the QR code, or search for MusFlame on the App Store. [gazco.com/electricapp](https://www.gazco.com/electricapp)





eReflex 150RW with Oak Log-effect,  
shown as two-sided installation



eReflex 195RW with Oak Log-effect, shown as three-sided installation. Also shown: optional Mood Lighting system.



# eReflex TV size guide

## Sizing your eReflex and your TV

There are plenty of choices for installations with your TV or media wall when you choose a Gazco eReflex. Choosing the size of your eReflex electric fire and your TV will come down to both the space you have available and your personal preference. Actual TV sizes vary across manufacturers, and the way your TV is fitted (for example into a cavity recess) will also impact the way it looks in relation to your fire. This is a rough guide for the best pairings of TVs with Gazco's landscape versions of the eReflex fire, but your expert retailer will often be able to help to achieve the perfect look by taking your whole installation into consideration.

## Suggested TV and eReflex combinations

Product	TV Size*
eReflex 85RW	32" - 43"
eReflex 110RW	43" - 55"
eReflex 135RW	50" - 65"
eReflex 150RW	55" - 65"
eReflex 195RW	65" - 75"



\*TV sizes refer to the standard diagonal screen dimension that TV manufacturers state when

describing the size of their products. If sizing your existing flat screen TV, measure diagonally from the top left of the screen to the bottom right to find the TV's advertised size. We also recommend measuring the width and height of your TV if lining it up with the eReflex below.



# WIN

## the cost of your product back!



*"Not only do I have a wonderful product, a real show-stopper when entertaining but they refunded the cost - in full!"*

For further home inspiration you can **view real life installations** at our **Customer Showcase page** and share your thoughts and photos of your new stove or fire installation to enter our draw!

- We will publish your entry on our Customer Showcase
- You will be entered into a draw for the chance to win the cost of your product back
- **Gain a second entry** by registering your product online for your free extended warranty: [gazco.com/registration](http://gazco.com/registration)



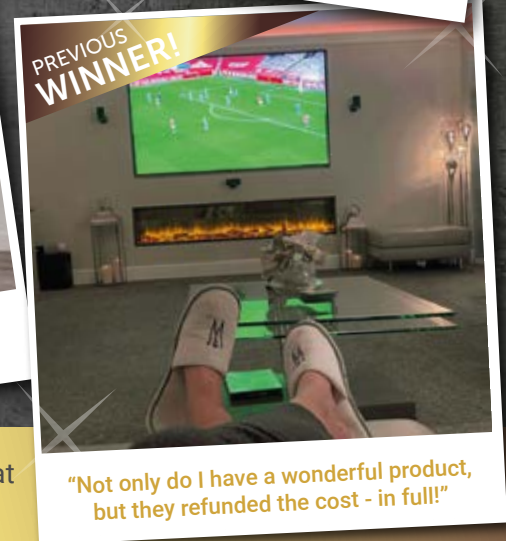
*"A talking point with everyone who sets their eyes on the fireplace."*



*"The fire looks realistic and is a great feature."*



*"It's really adaptable, depending on the mood, we just love it."*



**PREVIOUS WINNER!**

*"Not only do I have a wonderful product, but they refunded the cost - in full!"*

View real life installations and submit your review at [gazco.com/customershowcase](http://gazco.com/customershowcase)

\* Terms and conditions apply. See online for details

# Other electric ranges available from Gazco



Liberty 85 Electric in Black with Log & Pebble fuel effect and Amber flame setting, on a 120 High Bench

We're proud to offer an extensive electric portfolio, including a number of eye-catching stoves in both traditional and contemporary designs, and the easy-fit eStudio Arosa and Cerreto electric ranges, which create a stunning centrepiece with no building work required. Whatever your requirements, Gazco has the perfect solution to suit your style and budget. Ask your local retailer for more information or download our brochures from [www.gazco.com](http://www.gazco.com).



Chesterfield 5 Electric with Log & Pebble fuel effect on Amber flame setting





eReflex 150RW with Oak Log-effect, shown as three-sided installation. Also shown: optional Mood Lighting system.



Gazco Limited, Osprey Road, Sowton Industrial Estate, Exeter, Devon, England EX2 7JG

**Trade Sales:** 01392 261999 / NI: 01392 261990 • Email: [info@gazco.com](mailto:info@gazco.com) / NI: [northernireland@gazco.com](mailto:northernireland@gazco.com)

**Export Sales:** +44 1392 261990 • Email: [exportsales@gazco.com](mailto:exportsales@gazco.com)

[gazco.com](http://gazco.com)   

Gazco gratefully acknowledges the assistance of the following companies with photographic settings:

[www.furniturevillage.co.uk](http://www.furniturevillage.co.uk); [www.romo.com](http://www.romo.com); [www.debenhams.com](http://www.debenhams.com); [www.electrique.co.uk](http://www.electrique.co.uk); [www.theorangetree.co.uk](http://www.theorangetree.co.uk); [www.justshutters.co.uk](http://www.justshutters.co.uk); [www.homebase.co.uk](http://www.homebase.co.uk);  
[www.lauraashley.com](http://www.lauraashley.com); [www.nestinteriors.com](http://www.nestinteriors.com); [www.graceandgloryhome.co.uk](http://www.graceandgloryhome.co.uk); [www.stbridgetnurseryseries.co.uk](http://www.stbridgetnurseryseries.co.uk); [www.johnlewis.com](http://www.johnlewis.com); [www.wayfair.com](http://www.wayfair.com);  
[www.veryvintagehire.co.uk](http://www.veryvintagehire.co.uk); [www.beachbros.co.uk](http://www.beachbros.co.uk); [www.birlea.com](http://www.birlea.com); [www.originalstyle.com](http://www.originalstyle.com); [www.amtico.com](http://www.amtico.com); [www.chunkymonkeyfurniture.co.uk](http://www.chunkymonkeyfurniture.co.uk);  
[www.wallsandfloors.co.uk](http://www.wallsandfloors.co.uk); [www.desenio.co.uk](http://www.desenio.co.uk); [www.ikea.com](http://www.ikea.com); [www.sofarooms.co.uk](http://www.sofarooms.co.uk)

Paper sourced from sustainable forests and printed using vegetable based inks • A member of the Stovax Group © Copyright Gazco Ltd 2022 E & O E

Gazco pursue a policy of continuous product improvement, therefore, whilst our products are correct at the time of the photography, we reserve the right to make alterations and amendments. Exact product details should be discussed with your retailer at the time of purchase.

find a retailer

Find and support your local retailer at [gazco.com/retailers](http://gazco.com/retailers)



Your Gazco retailer: