

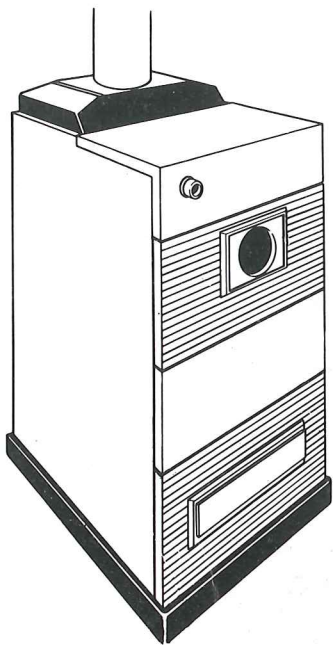
# “La Forestière” Franco-Belge

**WOOD and COAL burning Central Heating Boiler**  
**with an output of up to 160 000 Btu/hr**



 **FRANCO BELGE**





# THE FRANCO BELGE FORESTIÈRE

The Franco Belge Forestiere is a central heating boiler specially designed to produce a huge output and to burn wood. The boiler has a gravity feed type of hearth so that it can be stoked with a large amount of wood which then gradually falls into the fire. The large heat output (up to 160,000 Btu/hr) is efficiently transmitted to the circulating central heating water. The rate of burning is thermostatically controlled from the temperature of the central heating water.

## REQUIRES MINIMUM ATTENTION

Because of the large hearth, the stove can be filled with a considerable reserve of wood. The stove will burn unattended for between 3 and 12 hours from lighting.

## SIMPLE STOKING

The Forestiere has a huge door 2 ft × 1 ft which allows large logs to be used. Logs of up to 18" can be easily loaded.

## HIGH EFFICIENCY

The design of the heat exchanger with narrow air passages ensures very efficient combustion and heat transfer.

In addition, there are secondary air inlets which ensure complete combustion under all conditions.

## CONTROL OF BURNING RATE

The user can select the most suitable burning rate by controlling the air inlet. There is also a thermostat operating from the temperature of the circulating water, which will adjust the amount of inlet air.

## GREAT STRENGTH

The heat exchanger is made of special quality steel of exceptional thickness.

In addition, a special design avoids corrosion by eliminating the effects of condensation.

## SIMPLE MAINTENANCE

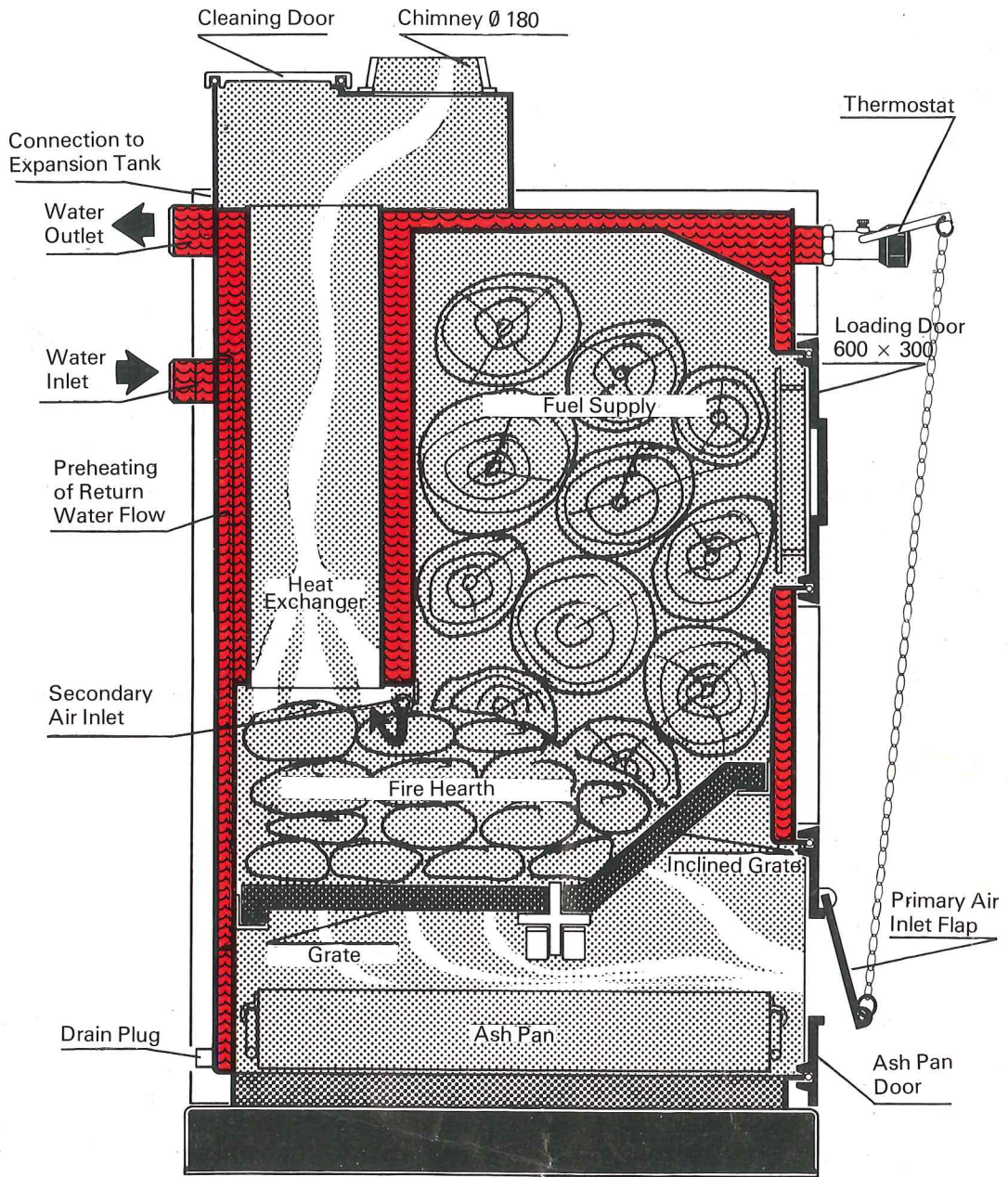
The heat exchanger is cleaned through a large door which gives access to all the surfaces.

The hearth grate is made up of separate bars which can be independently removed. The Forestiere has a very large ash pan.

## MULTI FUEL OPERATION

The Forestiere can use, without any modification, coal or anthracite.

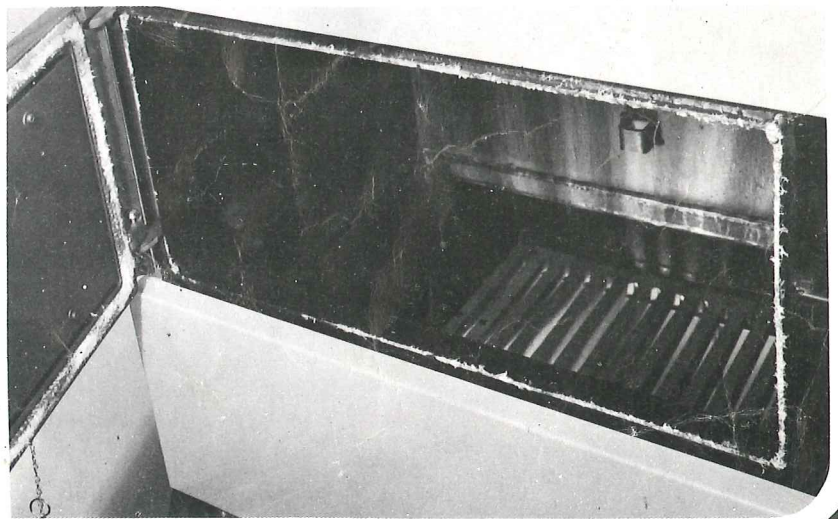
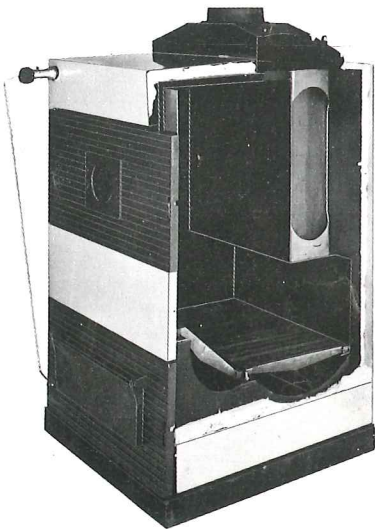




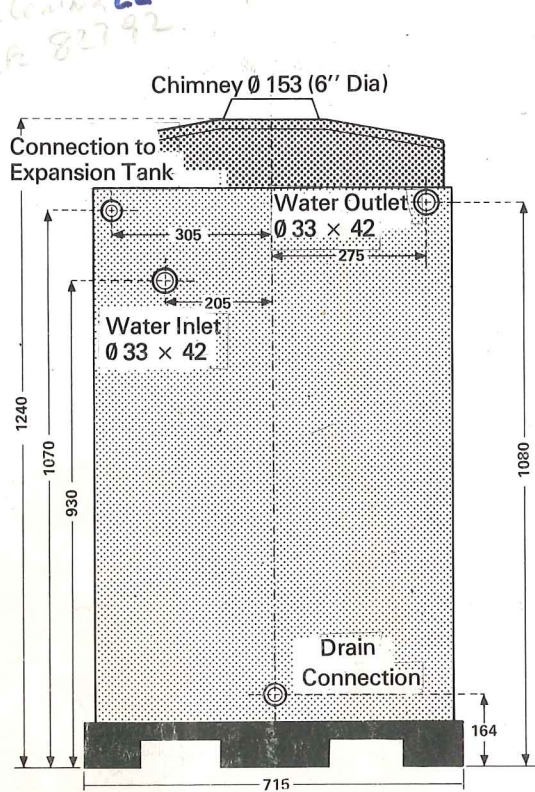
CUTAWAY VIEW

CROSS SECTION

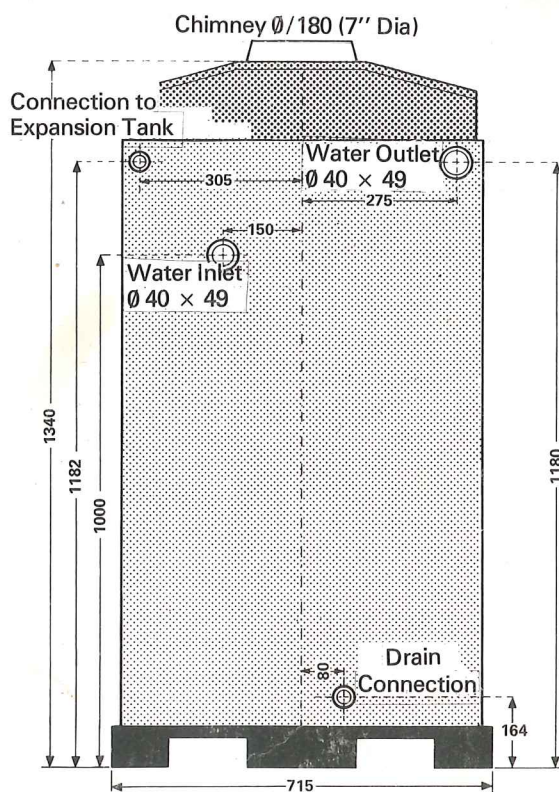
VIEW INSIDE THROUGH LOADING DOOR







REAR VIEW 93.27



REAR VIEW 93.40

**MODEL**

**93.27**

**93.40**

Maximum Output	108,000 Btu/hr	160,000 Btu/hr
Output Range : Wood Coal	60,000-108,000 Btu/hr 60,000-108,000 Btu/hr	100,000-160,000 Btu/hr 100,000-160,000 Btu/hr
External Dimensions : Width	28 ins.	28 ins.
Depth	23 1/2 ins.	30 ins.
Height	50 ins.	52 ins.
Dimensions of Hearth : Width	23 ins.	23 ins.
Depth	11 ins.	17 1/2 ins.
Height	25 1/2 ins.	29 1/2 ins.
Chimney Size	153 mm	180 mm
Water Pipe Sizes	33 × 42	40 × 49
Total Weight	748 lbs.	836 lbs.
Optimum Chimney Depression	2 mm	2 mm

**AYRSHIRE FUELS LTD.**  
KILMARNOCK 21741



**UA. ENGINEERING LIMITED**

CANAL STREET, SHEFFIELD S4 7ZE, ENGLAND

Telephone : (0742) 21167

738803

UA Engineering Ltd. Registered in England N° 627724

V.A.T. Registration N° 173 0969 47