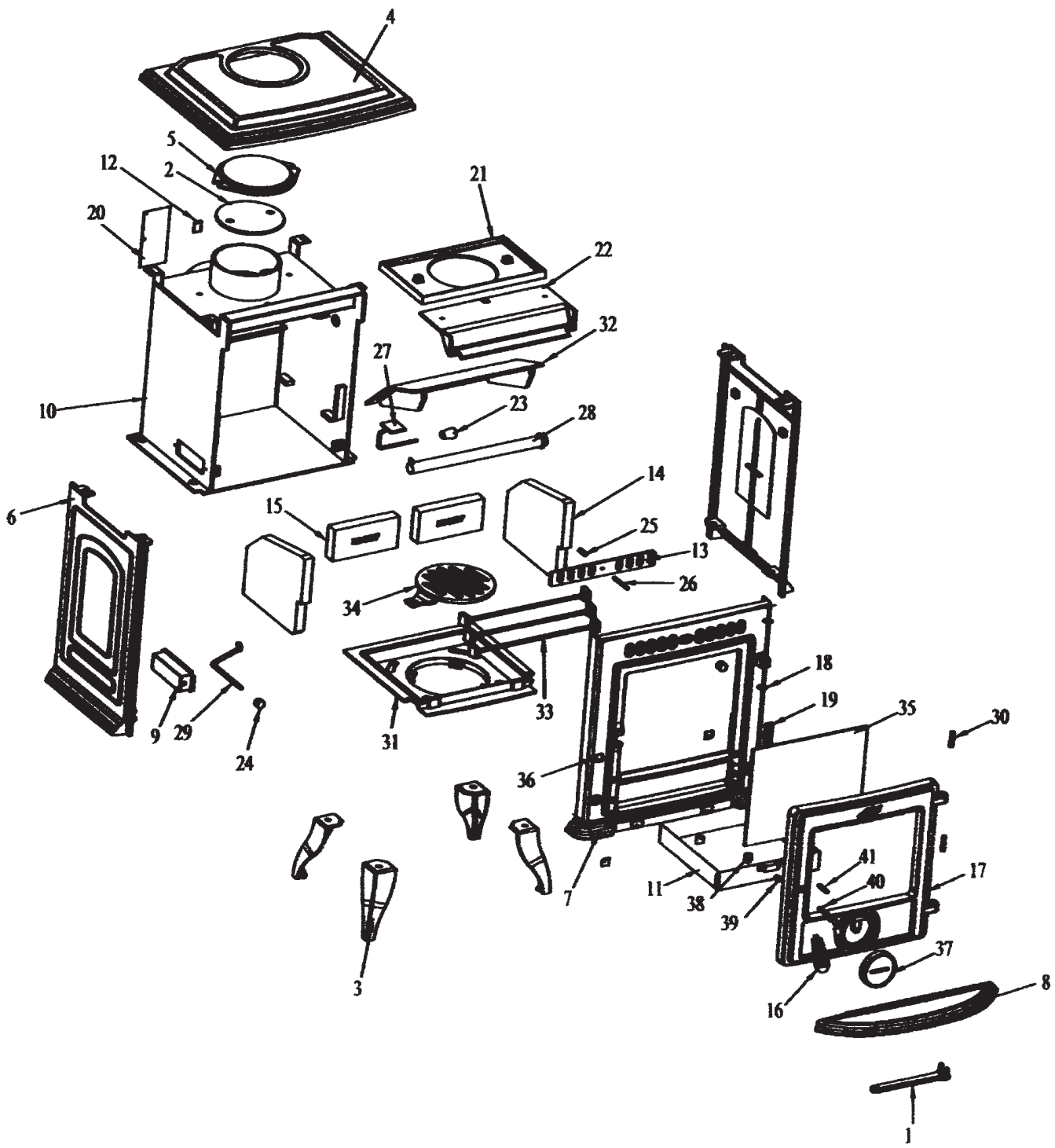


**AGA SOLID FUEL  
MUCH WENLOCK  
CLASSIC**

***SPARE PARTS  
MANUAL***

ITEM No.	CAT No.	STANLEY ITEM No.	DESCRIPTION	PRODUCT CODE
1	C1871	B00009DXX	OPERATING TOOL	FS4M997278
2	C1930	B00064AZZ	FLUE BLANKING PLATE	FS4M997706
3	C1973	B00077BXX	LEG	FS4M997288
4	C1916	B00209AXX	HOB	FS4M997289
5	C2175	B00210AZZ	HOB BLANKING PLATE	FS4M997290
6	NCA	B00211BXX	SIDE PANEL	FS4M997291
7	NCA	B00592AXX	FRONT PANEL	FS4M996274
8	C2031	B00593AXX	ASHTRAY FRONT	FS4M996022
9	C2047	F00223BXX	PULL ROD BOX	FS4M997294
10		F00238DXX	DRY SHELL	
11	C1878	F00835AXX	ASHPAN	FS4M997222
12		F00879BXX	RATING PLATE BRACKET	
13		F01000AXX	AIR SLIDER PLATE	
14		H00070BXX	SIDE BRICK	
15	C2062	H00197AXX	BRICK FOR DRY SHELL	FS4M996225
16	C1893	L00543AXX	SPRING HANDLE	FS4M997620
17	C2040	B00591AXX	FIRE DOOR ASSEMBLY	FS4M996071
18			HINGE WASHER	
21		Q00250AXX	DRY SHELL PROTECTION PLATE	
22		Q00754AXX	AIR WASH PLATE	
23	NCA	U00018AXX	SECONDARY AIR DAMPER KNOB	FS4M997227
24		U00165AXX	PULL KNOB	
25		V00151AXX	SPRING	
26		V00158AXX	AIR WASH SHUTTER SHAFT	
27		V00161AXX	SECONDARY AIR DAMPER	
28	C2139	V00162AXX	SECONDARY AIR TUBE	FS4M997230
29	C1989	V00393AXX	RIDDLING BAR	FS4M997302
30		V00936AXX	HINGE CAMP PIN	
31		Z00016BXX	FIRE BOX INSERT	
32		Z00019BXX	FLUE CLEANING PLATE	
33		Z00020AXX	FIRE FENCE	
34		Z00025BXX	GRATE	
35	C2082	T00099AXX	GLASS	FS4M996241
36	NCA	F00928AXX	DOOR CATCH	FS4M996258
37	C2046	B00579AZZ	SPIN VALVE	FS4M997726
38	C2026	F00003AXX	DOOR GLASS CLIPS	FS4M997205
39	NCA	V00858AXX	DOOR HANDLE SPACER	FS4M996024
40	C2030	V00857AXX	DOOR HANDLE AXLE	FS4M996019
41	C2043	V00703AXX	M8 x 39 SPINDLE	FS4M997272



**AGA SOLID FUEL MUCH WENLOCK CLASSIC**